



**Marlowe Close
Torquay
Devon
TQ2**

Offers in Excess of £320,000

bettermove

Marlowe Close Torquay

Bettermove are proud to present this 3 bedroom detached house in Torquay.

The property benefits from double glazing, and gas central heating throughout, with off street parking available via the driveway and garage.

The council tax band is D.

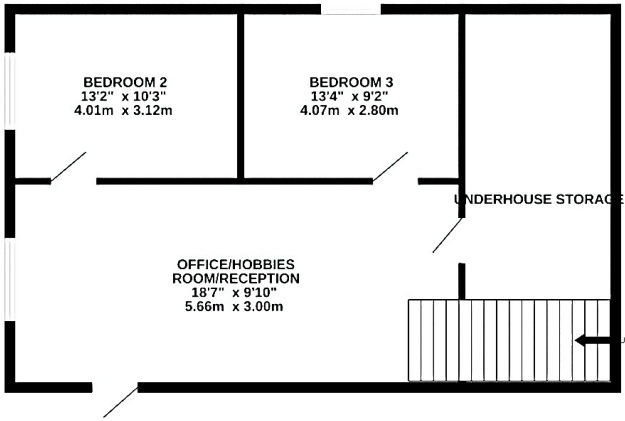
The interior of this spacious family home comprises a generous living/dining room, fitted kitchen, principal bedroom, and family bathroom on the upper ground floor. The lower level consists of two further bedrooms and a versatile office/hobbies room with access to useful under-house storage. The exterior boasts tiered rear gardens with decking, patio and lawned areas, perfect for enjoying the summer months.

Located in the popular coastal town of Torquay, the property is close to a range of amenities, including shops, supermarkets, restaurants, pubs, and schools. Excellent transport connections can be found from Torre, and Torquay train station, a variety of local bus routes, and quick access to the South Devon Expressway.

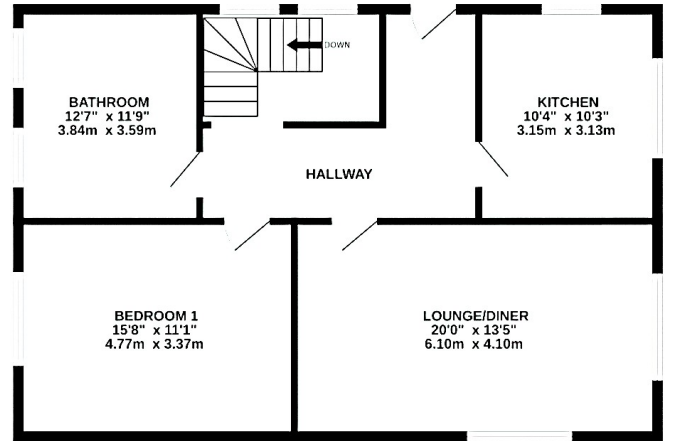
This exciting opportunity should not be missed. All enquiries can be made through Bettermove.



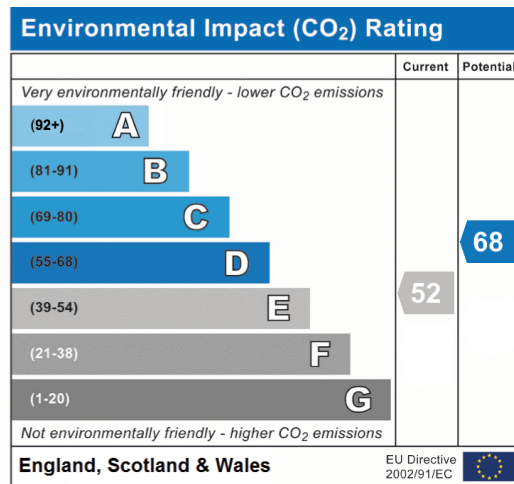
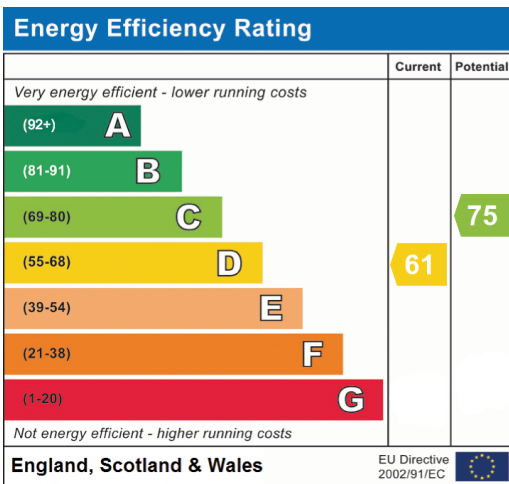
GROUND FLOOR



1ST FLOOR



Made with Metropix © 2024





20-22 Bridge End, Leeds, LS1 4DJ
t: 0330 004 0050 e: hello@bettermove.co.uk
www.bettermove.co.uk