



**Kidmore Close
Charmouth
Bridport
Dorset
DT6**

Offers in Excess of £410,000

bettermove

Kidmore Close Bridport

Bettermove are proud to present this 3 bedroom detached house in Charmouth, available with no forward chain.

The property benefits from double glazing, and gas central heating throughout, with off street parking available via the driveway, and a single garage.

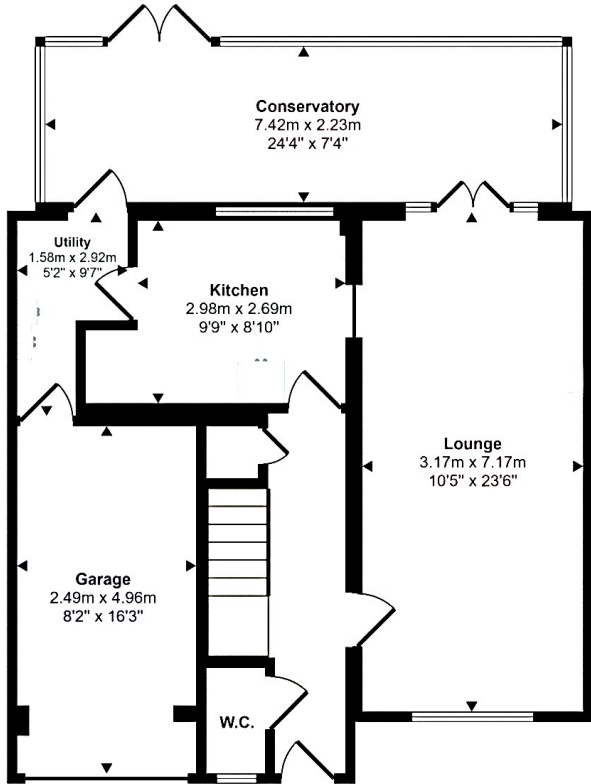
The council tax band is E.

The interior of this well presented property, which may require some modernisation throughout, and comprises a spacious living room, fitted kitchen, WC, conservatory, and utility room on the ground floor, with access to the garage. The first floor consists of three bedrooms and a shower room. The exterior boasts a private rear garden, with sea views, perfect for enjoying the summer months.

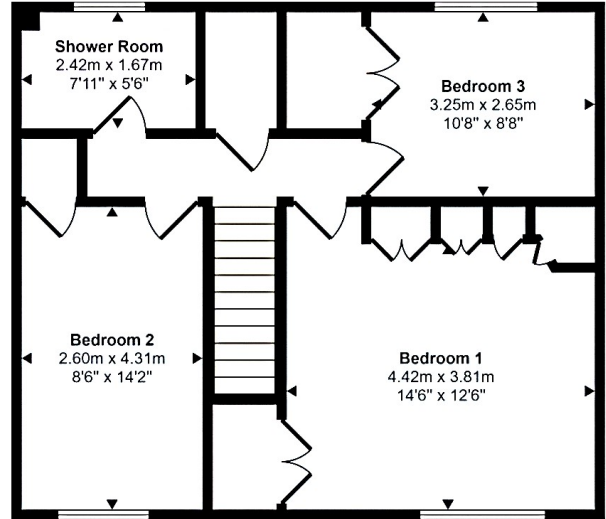
Located in the sought after village of Charmouth, Bridport, the property is close to a range of amenities, including shops, supermarkets, restaurants, pubs, schools, and a short distance to the seafront. Excellent transport connections can be found from Axminster train station, a variety of local bus routes, and quick access to the A35.

This exciting opportunity should not be missed. All enquiries can be made through Bettermove.

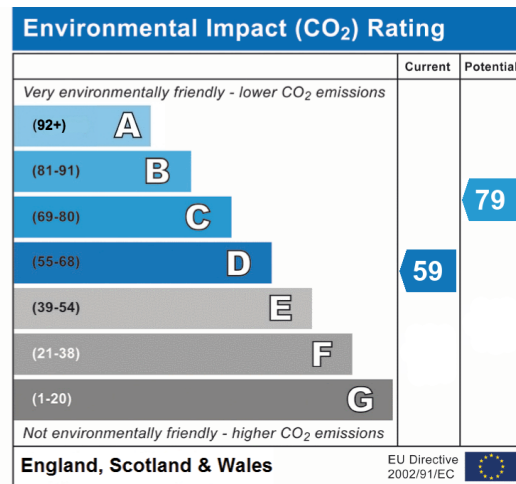
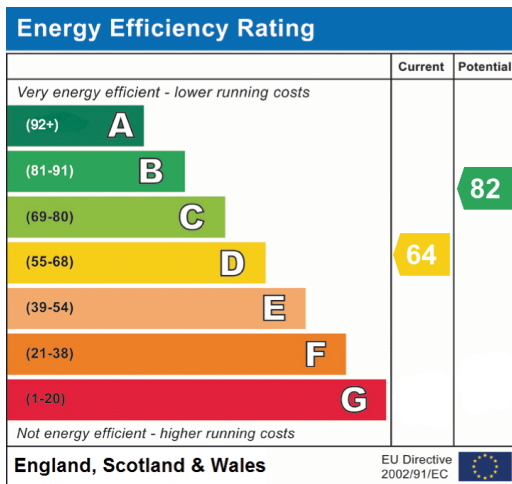




Ground Floor



First Floor





20-22 Bridge End, Leeds, LS1 4DJ
t: 0330 004 0050 e: hello@bettermove.co.uk
www.bettermove.co.uk