



**Woodspring Close
Ipswich
Suffolk
IP2**

Offers In Excess Of £599,000

bettermove

Woodspring Close Ipswich

Bettermove are proud to present this 4 bedroom detached house in Ipswich.

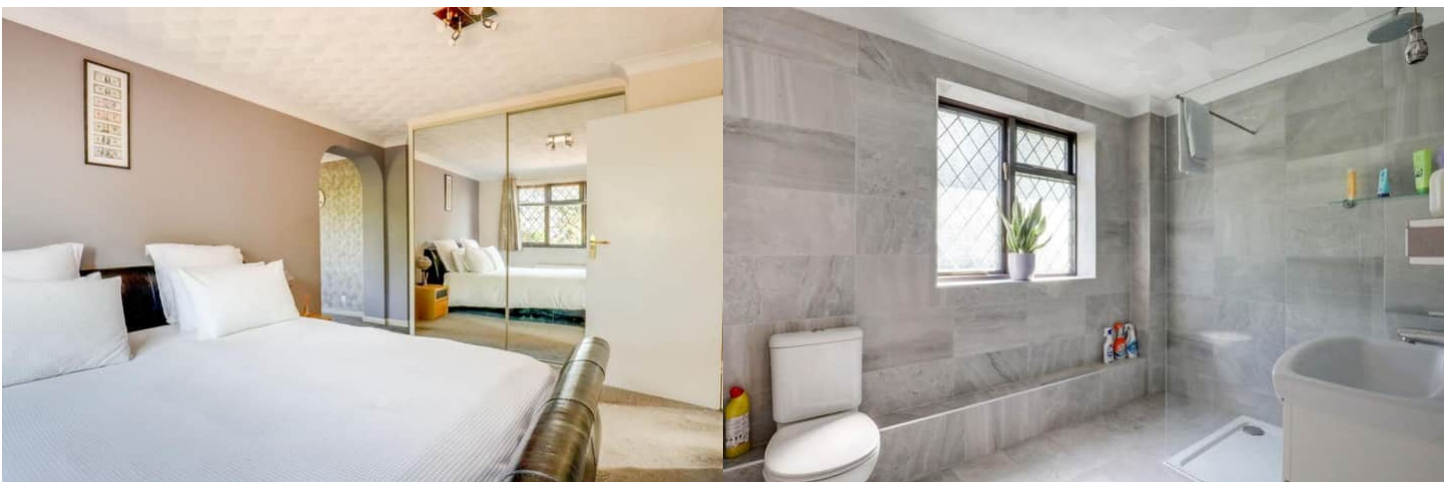
The property benefits from double glazing, and gas central heating throughout, with off street parking available via the driveway and garage.

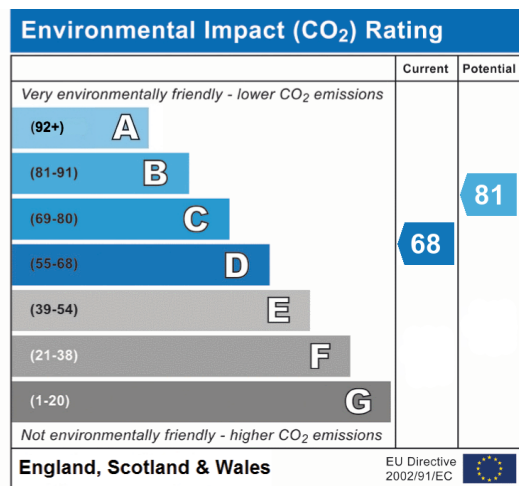
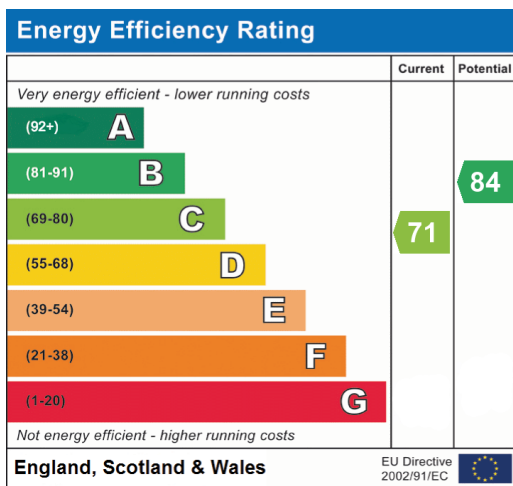
The council tax band is E.

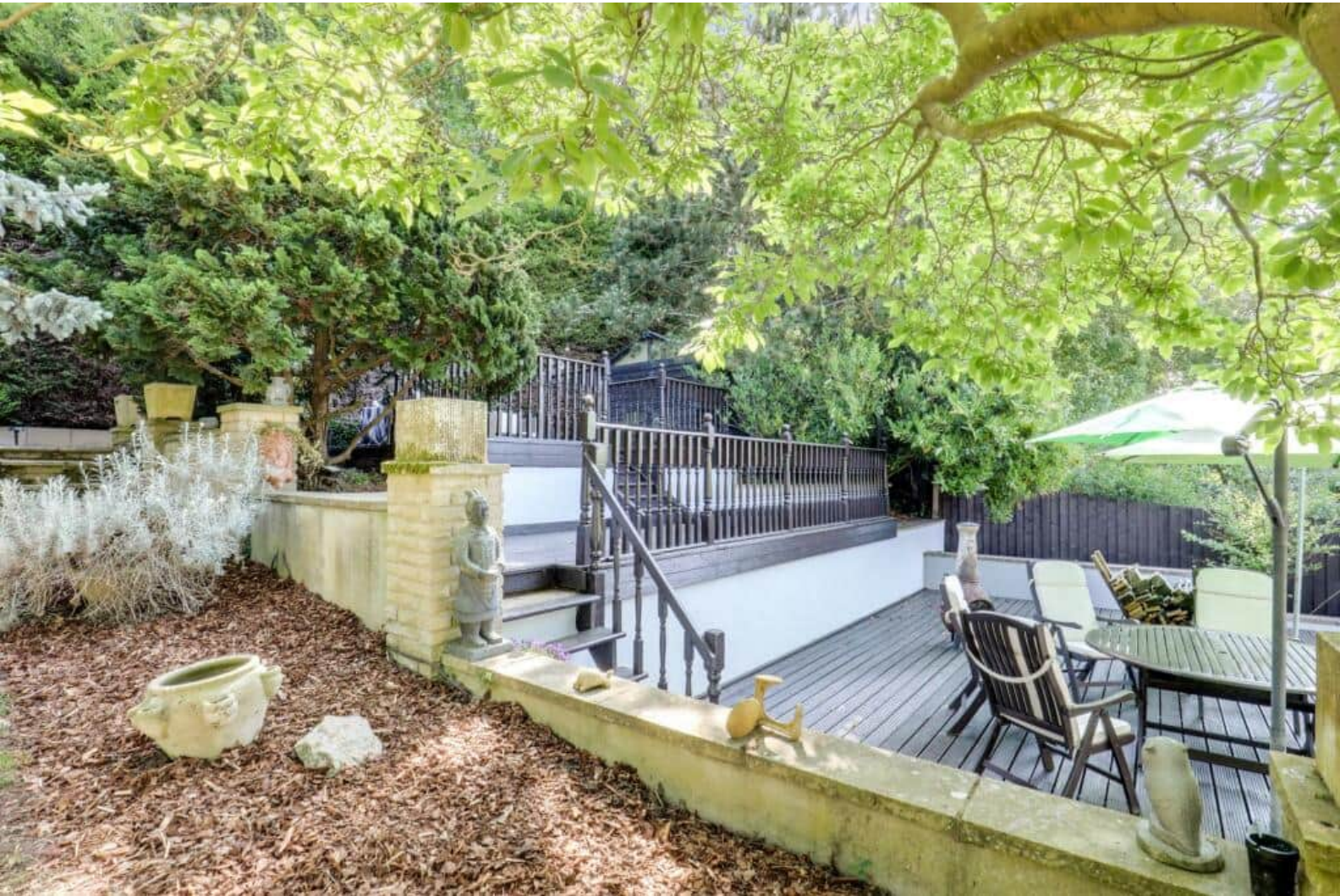
The interior of this versatile family home comprises a spacious living room with adjoining games and entertainment area, a separate snug, fitted kitchen and entrance porch on the lower levels. The upper levels consist of four well-proportioned bedrooms, including a generous master bedroom with dressing area and en-suite bathroom, together with a shower room. The exterior boasts a beautifully landscaped rear garden arranged over several levels, perfect for enjoying the summer months

Located in the popular town of Ipswich, the property is close to a range of amenities, including shops, supermarkets, restaurants, pubs, and schools. Excellent transport connections can be found from Ipswich train station, a variety of local bus routes, and quick access to the A14, and A12.

This exciting opportunity should not be missed. All enquiries can be made through Bettermove.







20-22 Bridge End, Leeds, LS1 4DJ
t: 0330 004 0050 e: hello@bettermove.co.uk
www.bettermove.co.uk