



**Buttercup Drive
Polegate
East Sussex
BN26**

Offers in Excess of £600,000

bettermove

Buttercup Drive Polegate

Bettermove are proud to present this 4 bedroom detached house, with a self-contained 1 bedroom annexe, in Polegate.

The property benefits from double glazing, and gas central heating throughout, with off street parking available via the driveway.

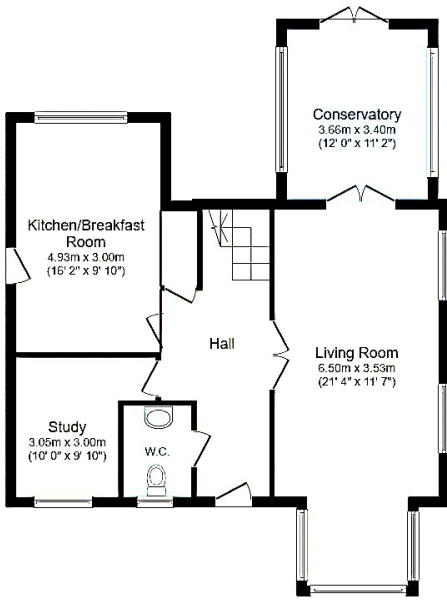
The council tax band is E.

The interior of this beautifully presented property comprises a spacious living room, fitted kitchen/breakfast room, study, conservatory, and a WC on the ground floor. The first floor consists of four bedrooms, with the master bedroom benefitting from a private en-suite, alongside a family bathroom. The property further benefits from a self-contained annexe, housing a living room, fitted kitchen, one double bedroom, and shower room. Situated on approximately one third of an acre, the exterior boasts a detached garage, and a large, private rear garden, with both patio and lawn areas, perfect for enjoying the summer months.

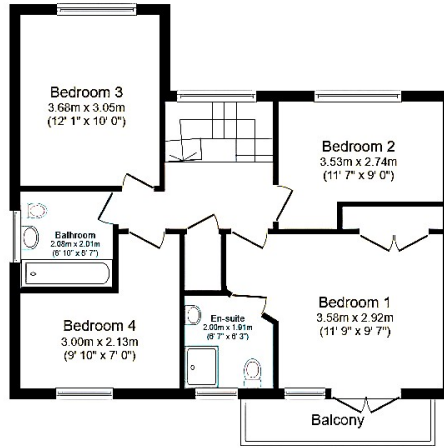
Located in the popular town of Polegate, the property is close to a range of amenities, including shops, supermarkets, restaurants, pubs, and schools. Excellent transport connections can be found from Polegate train station, a variety of local bus routes, and quick access to the Polegate Bypass.

This exciting opportunity should not be missed. All enquiries can be made through Bettermove.

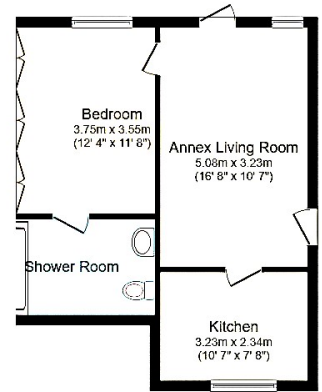




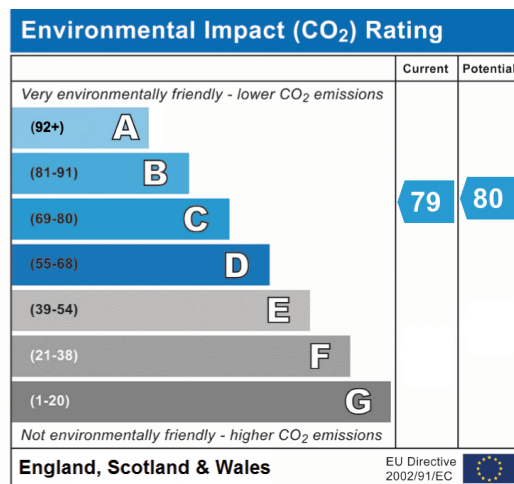
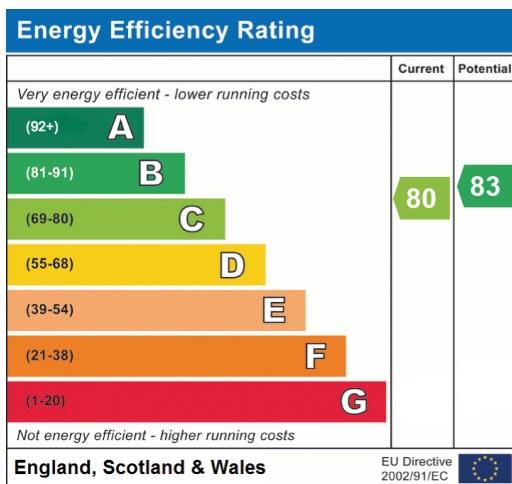
Ground Floor
Floor area 77.4 sq.m. (834 sq.ft.)



First Floor
Floor area 61.4 sq.m. (661 sq.ft.)



Annexe
Floor area 46.6 sq.m. (502 sq.ft.)





20-22 Bridge End, Leeds, LS1 4DJ
t: 0330 004 0050 e: hello@bettermove.co.uk
www.bettermove.co.uk