



Keller Close  
Stevenage  
Hertfordshire  
SG2

Offers In Excess Of £170,000

bettermove

# Keller Close

## Stevenage

Bettermove are proud to present this 2 bedroom flat in Stevenage.

This property benefits from double glazing, and electric central heating throughout, with off street parking available via the allocated parking.

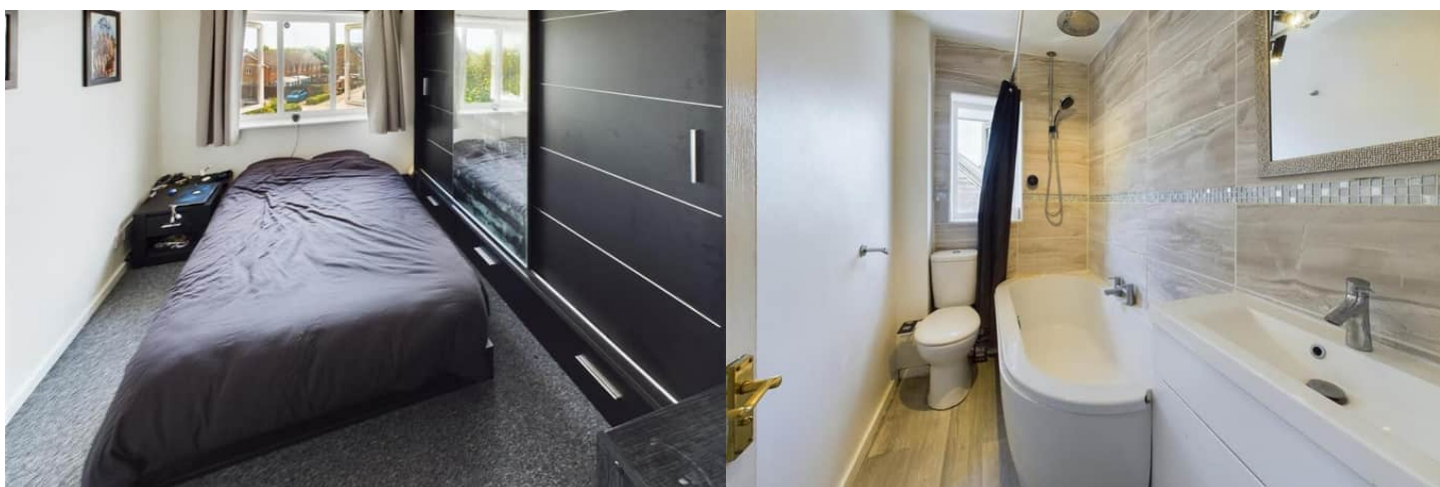
The council tax band is B.

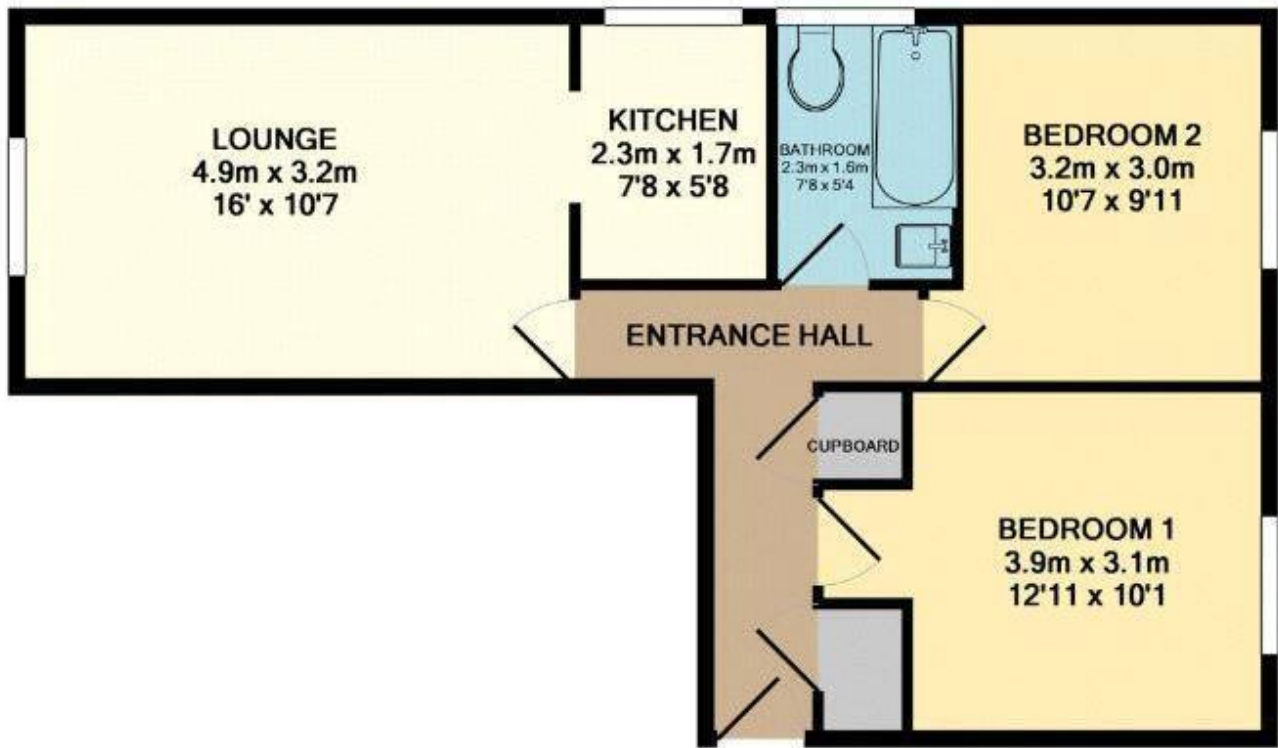
This is a leasehold property with 66 years remaining on the lease; the ground rent is £301pa and the service charge is £1,400pa.

The interior of this beautifully presented property comprises a spacious living/dining room and fitted kitchen, as well as the 2 bedrooms and the family bathroom.

Located in the popular town of Stevenage, the property is close to a range of amenities, including shops, supermarkets, restaurants and pubs. Excellent transport connections can be found from Stevenage train station (1.7 miles), variety of bus routes and the A1(M).

This exciting opportunity should not be missed. All enquiries can be made through Bettermove.





TOTAL APPROX. FLOOR AREA 50.4 SQ.M. (543 SQ.FT.)

Whilst every attempt has been made to ensure the accuracy of the floor plan contained here, measurements of doors, windows, rooms and any other items are approximate and no responsibility is taken for any error, omission, or mis-statement. This plan is for illustrative purposes only and should be used as such by any prospective purchaser. The services, systems and appliances shown have not been tested and no guarantee as to their operability or efficiency can be given.  
 Made with Metropix ©2018

Energy Efficiency Rating		
	Current	Potential
Very energy efficient - lower running costs		
(92+) <b>A</b>		
(81-91) <b>B</b>		87
(69-80) <b>C</b>		
(55-68) <b>D</b>	64	
(39-54) <b>E</b>		
(21-38) <b>F</b>		
(1-20) <b>G</b>		
Not energy efficient - higher running costs		
<b>England, Scotland &amp; Wales</b>	EU Directive 2002/91/EC	

20-22 Bridge End, Leeds, LS1 4DJ  
t: 0330 004 0050 e: hello@bettermove.co.uk  
[www.bettermove.co.uk](http://www.bettermove.co.uk)