



Fairacres Close  
Keynsham  
Bristol  
Somerset  
BS31

Offers in Excess of £125,000

bettermove 

# Fairacres Close

## Bristol

Bettermove are proud to present this 2 bedroom retirement flat in Keynsham, welcoming over 55s only.

The property benefits from double glazing, and electric heating throughout, with communal parking available.

The council tax band is B.

This is a leasehold property with 85 years remaining on the lease; the service charge is £3,577.47 per annum.

The interior of this well presented, ground floor property comprises a spacious living room, fitted kitchen, two bedrooms, and a wet room. The property further benefits from communal gardens including closed drying area and a meeting room.

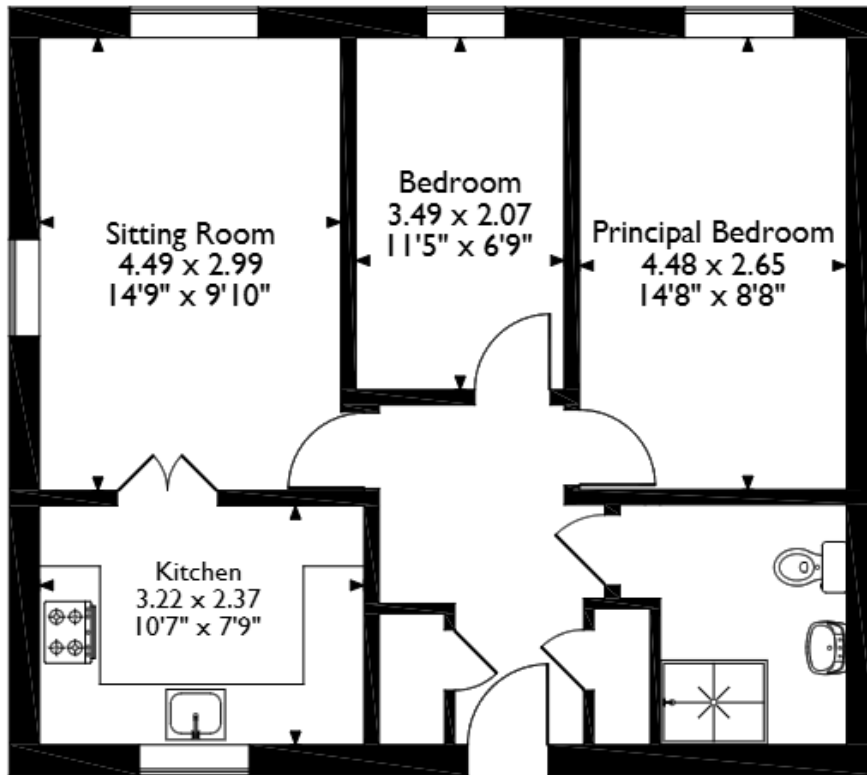
Located in the popular town of Keynsham, Bristol, the property is close to a range of amenities, including shops, supermarkets, restaurants and pubs. Excellent transport connections can be found from Keynsham train station, a variety of local bus routes, and quick access to the A4.

This exciting opportunity should not be missed. All enquiries can be made through Bettermove.

---



Fairacres Close, Keynsham, Bristol  
 Approximate Gross Internal Area  
 56 Sq M/603 Sq Ft



**Ground Floor**

Please note that the location of doors, windows and other items are approximate and this floorplan is to be used for illustrative purposes only. Unauthorized reproduction is prohibited.

Energy Efficiency Rating		
	Current	Potential
<i>Very energy efficient - lower running costs</i>		
(92+) <b>A</b>		
(81-91) <b>B</b>		
(69-80) <b>C</b>		73
(55-68) <b>D</b>		
(39-54) <b>E</b>	51	
(21-38) <b>F</b>		
(1-20) <b>G</b>		
<i>Not energy efficient - higher running costs</i>		
<b>England, Scotland &amp; Wales</b>	EU Directive 2002/91/EC	



20-22 Bridge End, Leeds, LS1 4DJ  
t: 0330 004 0050 e: hello@bettermove.co.uk  
[www.bettermove.co.uk](http://www.bettermove.co.uk)