



Manor Mills
Ingram Street
Leeds
West Yorkshire
LS11

Offers in Excess of £80,000

bettermove

Ingram Street Leeds

Bettermove are proud to present this 1 bedroom apartment in Leeds, available with no forward chain.

This is currently a tenanted property, and it will be sold with tenants in situ for immediate investment. Rental yields can be obtained through Bettermove.

The property benefits from double glazing, and electric heating throughout, with private parking available.

The council tax band is A.

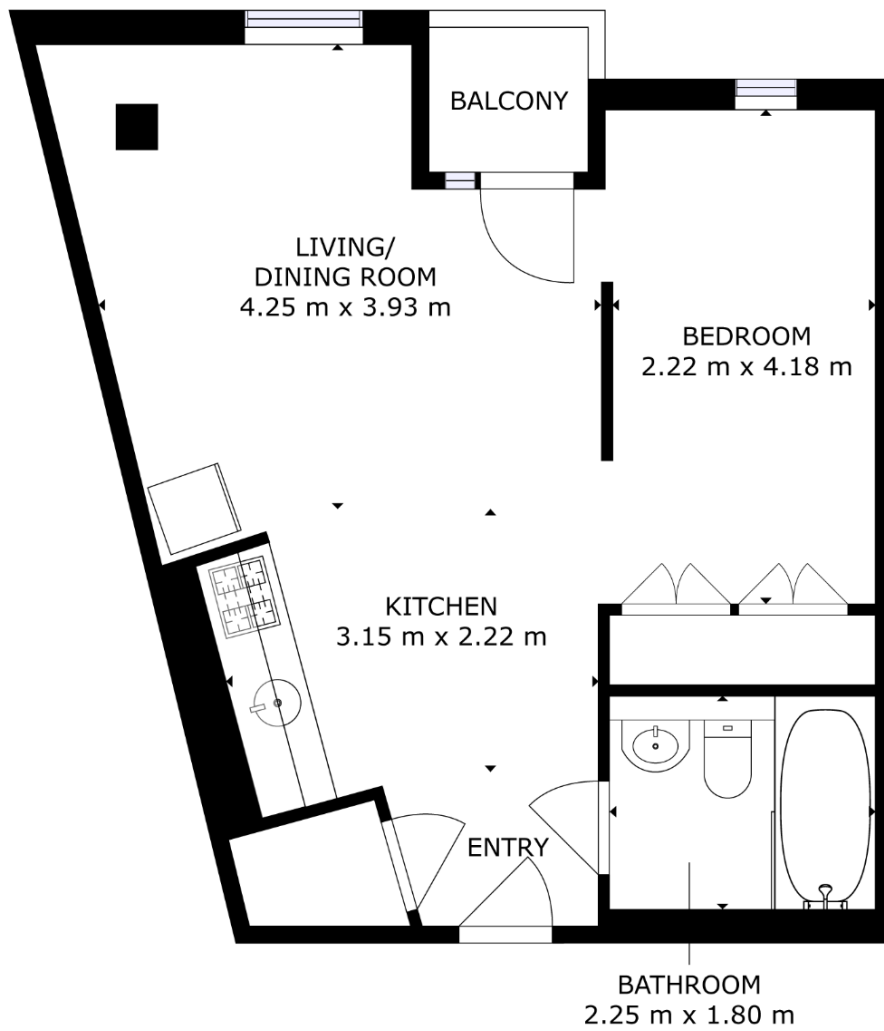
This is a leasehold property with 979 years remaining on the lease; the ground rent is £300.00 per annum, and the service charge is £1,900.00 per annum.

The interior of this beautifully presented property comprises a spacious, open-plan living/dining/kitchen area, one double bedroom, and a family bathroom. The property further benefits from a private balcony, perfect for enjoying the summer months.

Located in the popular city of Leeds, the property is close to a range of amenities, including shops, supermarkets, restaurants, and pubs. Excellent transport links can be found from Leeds train station, a variety of local bus routes, and quick access to the M62.

This exciting opportunity should not be missed! All enquiries can be made through Bettermove.





Energy Efficiency Rating		
	Current	Potential
<i>Very energy efficient - lower running costs</i>		
(92+) A		
(81-91) B		
(69-80) C	75	82
(55-68) D		
(39-54) E		
(21-38) F		
(1-20) G		
<i>Not energy efficient - higher running costs</i>		
England, Scotland & Wales	EU Directive 2002/91/EC	

Environmental Impact (CO ₂) Rating		
	Current	Potential
<i>Very environmentally friendly - lower CO₂ emissions</i>		
(92+) A		
(81-91) B		
(69-80) C	77	76
(55-68) D		
(39-54) E		
(21-38) F		
(1-20) G		
<i>Not environmentally friendly - higher CO₂ emissions</i>		
England, Scotland & Wales	EU Directive 2002/91/EC	



20-22 Bridge End, Leeds, LS1 4DJ
t: 0330 004 0050 e: hello@bettermove.co.uk
www.bettermove.co.uk