



**Westover
Langport
Somerset
TA10**

Offers In Excess Of £260,000

bettermove

Westover

Somerset

Bettermove are proud to present this 3 bedroom detached house in Langport. Available with no forward chain.

This property benefits from double glazing, and gas central heating throughout, with off street parking available via the driveway.

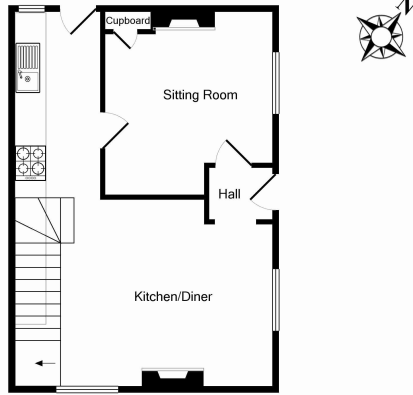
The council tax band is B.

The interior of this beautifully presented property comprises a spacious living room and fitted kitchen/dining area on the ground floor. The first floor consists of 3 bedrooms, with the master bedroom including an en-suite and the family bathroom. The exterior boasts a private rear garden, perfect for enjoying the summer months.

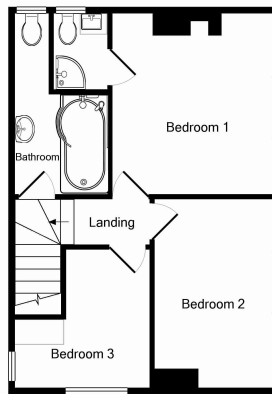
Located in the popular town of Langport, the property is close to a range of amenities, including shops, supermarkets, restaurants and pubs. Excellent transport connections can be found from Bridgwater train station (12.1 miles), variety of bus routes and the A378 and M5.

This exciting opportunity should not be missed. All enquiries can be made through Bettermove.





Ground Floor



1st Floor

Made with Metropix ©2012

Energy Efficiency Rating		
	Current	Potential
<i>Very energy efficient - lower running costs</i>		
(92+) A		
(81-91) B		85
(69-80) C		
(55-68) D	62	
(39-54) E		
(21-38) F		
(1-20) G		
<i>Not energy efficient - higher running costs</i>		
England, Scotland & Wales	EU Directive 2002/91/EC	

Environmental Impact (CO ₂) Rating		
	Current	Potential
<i>Very environmentally friendly - lower CO₂ emissions</i>		
(92+) A		
(81-91) B		85
(69-80) C		
(55-68) D	61	
(39-54) E		
(21-38) F		
(1-20) G		
<i>Not environmentally friendly - higher CO₂ emissions</i>		
England, Scotland & Wales	EU Directive 2002/91/EC	



20-22 Bridge End, Leeds, LS1 4DJ
t: 0330 004 0050 e: hello@bettermove.co.uk
www.bettermove.co.uk