



**Gilroy Street
London
SE10**

Offers In Excess Of £620,000

bettermove

Gilroy Street London

Bettermove are proud to present this 2 bedroom semi-detached house in London.

This property benefits from high performance glazing, community heating scheme system, allocated parking space, and concierge service available.

The council tax band is E.

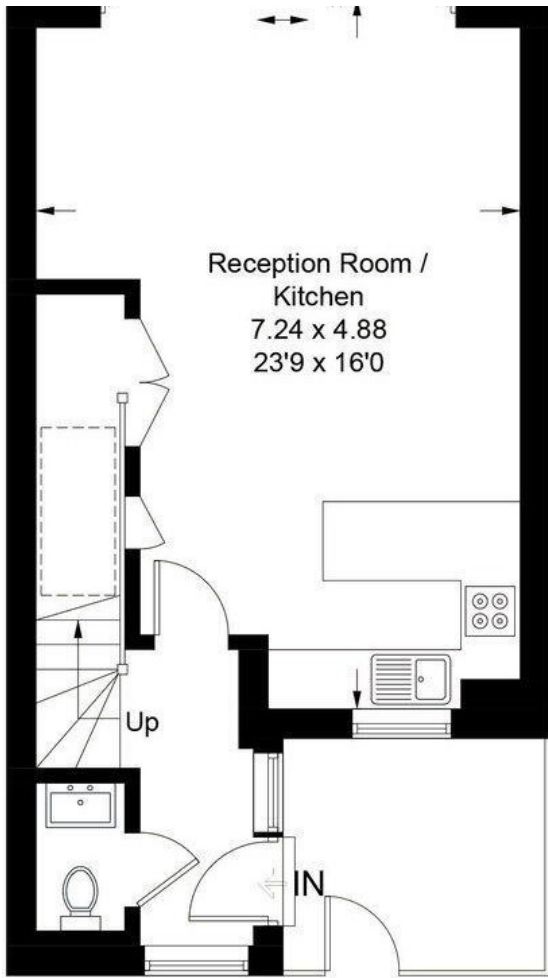
This is a freehold property, and comes with an estate charge of 954.00 per annum.

The interior of this beautifully presented property comprises a spacious, open-plan living/kitchen/dining area, with bi-fold doors leading to the garden, and a WC on the ground floor. The first floor consists of two generous double bedrooms, and a family bathroom. Outside, the property boasts a private garden, laid with paving, perfect for enjoying the summer months.

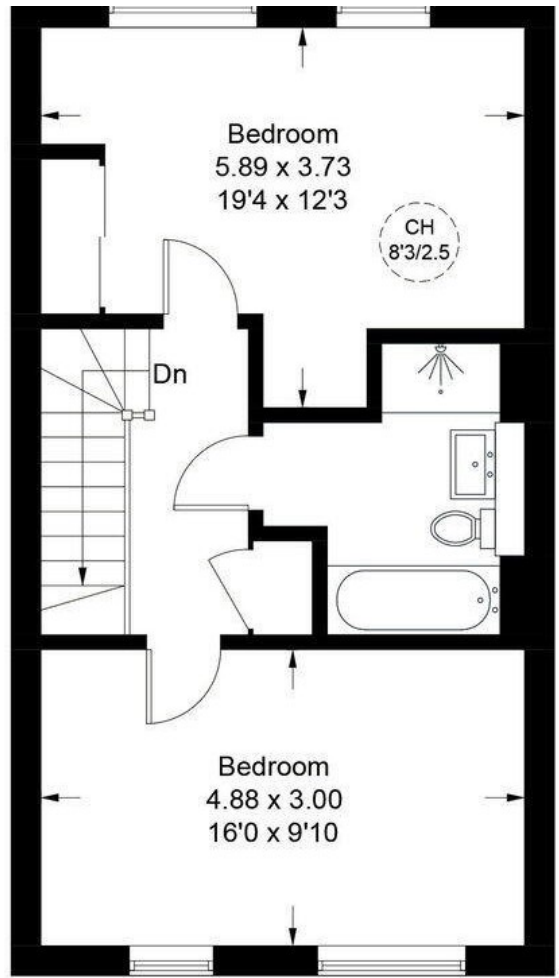
Located in the popular London borough of Greenwich, the property is close to a range of amenities, including shops, supermarkets, restaurants, pubs, schools, Southern Park, the Thames path, the ecology park, and the O2. Excellent transport links can be found from North Greenwich station (Jubilee line) the riverboat, and a variety of local bus routes, giving multiple links into central London, with quick access to the A2, leading to the M25.

This exciting opportunity should not be missed! All enquiries can be made through Bettermove.

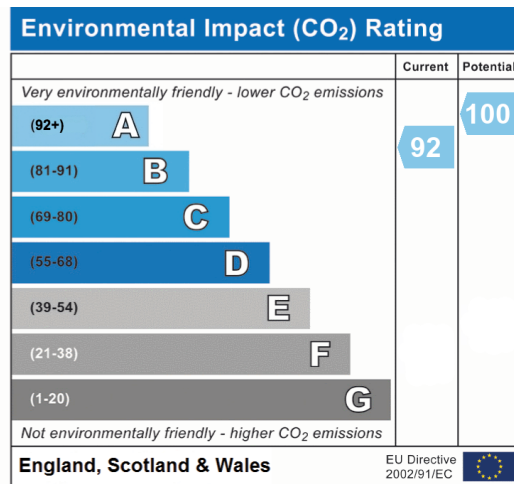
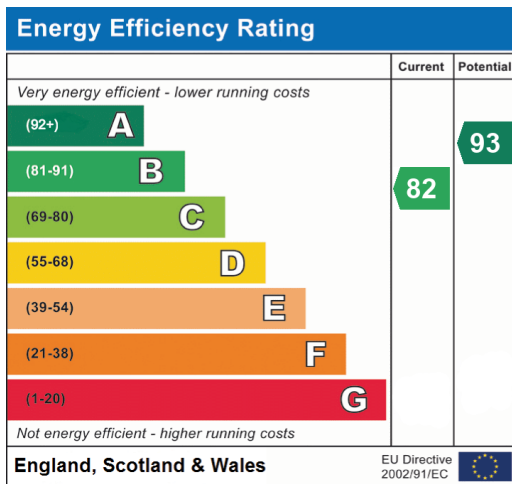




Ground Floor



First Floor





20-22 Bridge End, Leeds, LS1 4DJ
t: 0330 004 0050 e: hello@bettermove.co.uk
www.bettermove.co.uk