



**Goldsborough Road  
Doncaster  
South Yorkshire  
DN2**

**Offers in Excess of £155,000**

**bettermove**

# Goldsborough Road

## Doncaster

Bettermove are proud to present this 3 bedroom terraced house in Doncaster, available with no forward chain.

The property is currently tenanted and it will be sold with tenants in situ for immediate investment. Rental yields can be obtained through Bettermove.

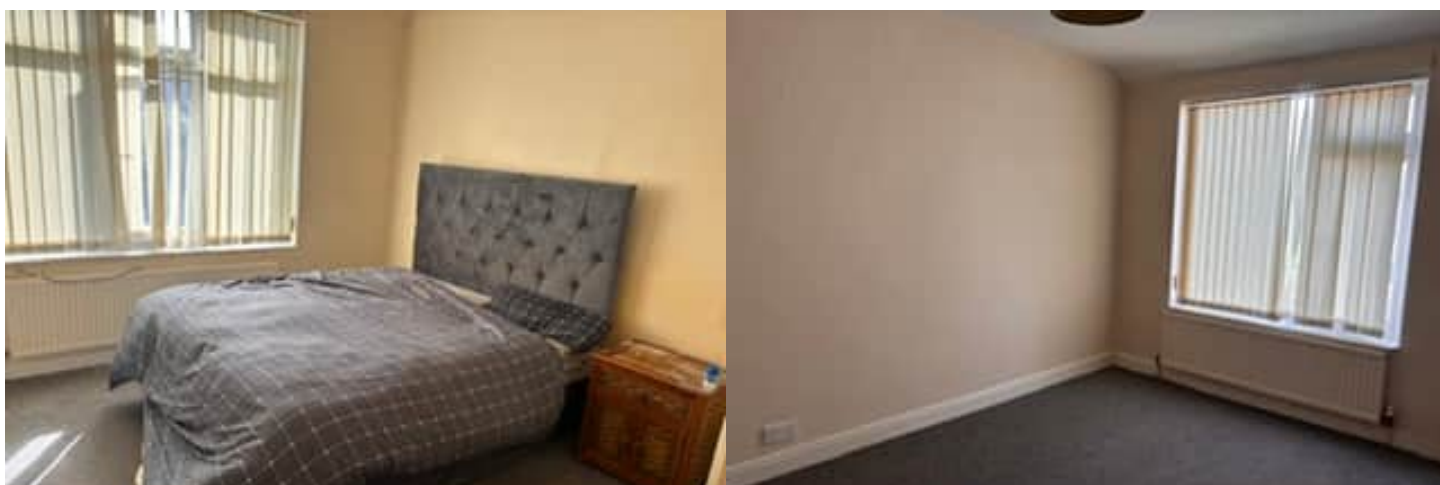
The property benefits from double glazing, and gas central heating throughout, with on street parking available.

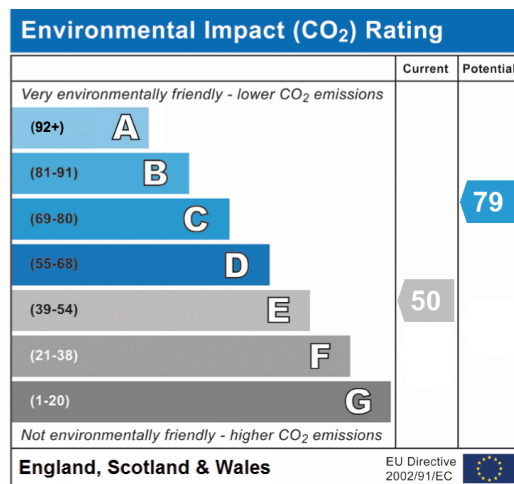
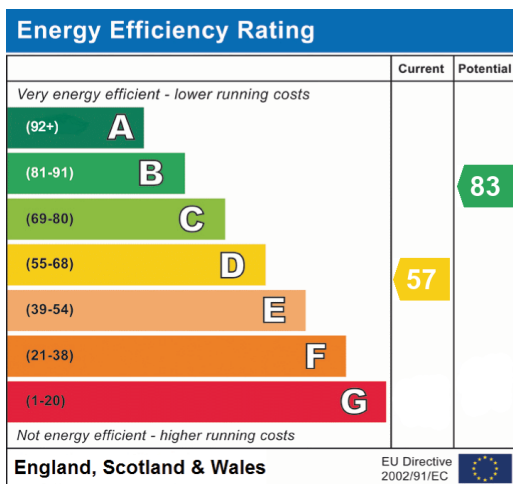
The council tax band is A.

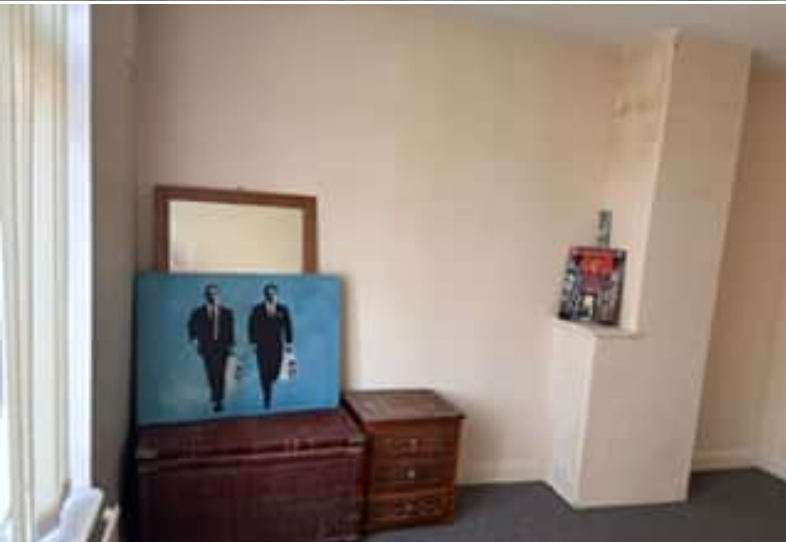
The interior of this beautifully presented property comprises a spacious living room, with feature fireplace, dining room and fitted kitchen on the ground floor. The first floor consists of three bedrooms, including two doubles, and one single, alongside the family bathroom. The exterior boasts a private rear garden, laid with both lawn and patio areas, perfect for enjoying the summer months.

Located in the popular city of Doncaster, the property is close to a range of amenities, including shops, supermarkets, restaurants, pubs, and schools. Excellent transport connections can be found from Doncaster train station, a variety of local bus routes, with quick access to the A1(M), and M18.

This exciting opportunity should not be missed. All enquiries can be made through Bettermove.







20-22 Bridge End, Leeds, LS1 4DJ  
t: 0330 004 0050 e: hello@bettermove.co.uk  
[www.bettermove.co.uk](http://www.bettermove.co.uk)