



Post Office Road
Featherstone
Pontefract
West Yorkshire
WF7

Offers In Excess Of £90,000

bettermove

Post Office Road Pontefract

Bettermove are proud to present this 3 bedroom terraced house in Featherstone, available with no forward chain.

The property benefits from double glazing, and gas central heating throughout, with on street parking available.

The council tax band is A.

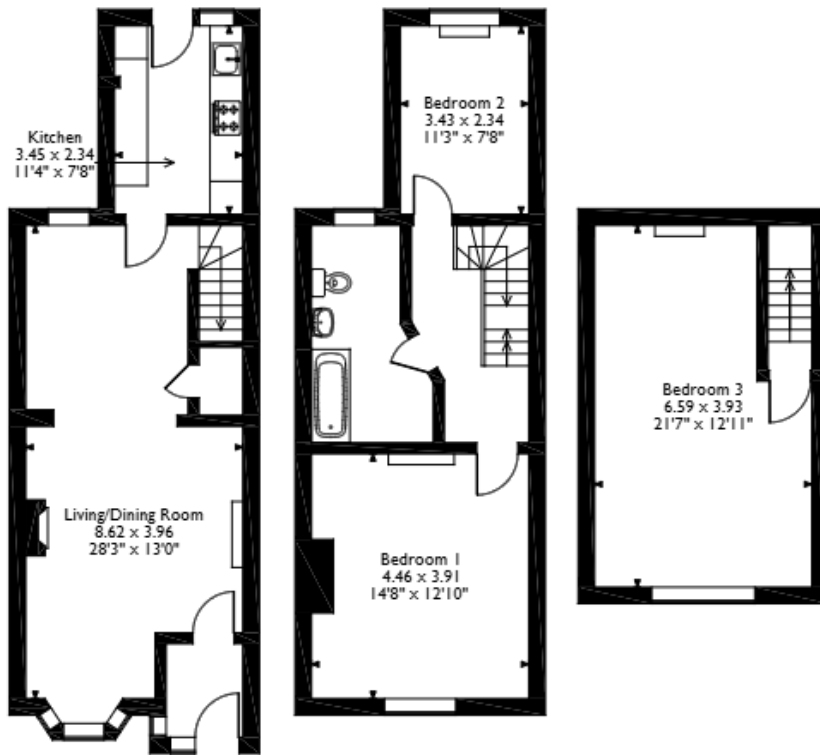
The interior of this property, which requires modernisation throughout, comprises a spacious living room, dining room and fitted kitchen on the ground floor. The first floor consists of two bedrooms and the family bathroom, with the third bedroom located in the loft room. The exterior boasts a private rear yard, perfect for enjoying the summer months.

Located in the popular town of Featherstone, Pontefract, the property is close to a range of amenities, including shops, supermarkets, restaurants, pubs, and schools. Excellent transport connections can be found from Featherstone train station, a variety of local bus routes, with quick access to the M1, and M62.

This exciting opportunity should not be missed. All enquiries can be made through Bettermove.



Post Office Road, Featherstone, Pontefract
Approximate Gross Internal Area
113 Sq M/1217 Sq Ft



Ground Floor

First Floor

Second Floor

Please note that the location of doors, windows and other items are approximate and this floorplan is to be used for illustrative purposes only. Unauthorized reproduction is prohibited.



20-22 Bridge End, Leeds, LS1 4DJ
t: 0330 004 0050 e: hello@bettermove.co.uk
www.bettermove.co.uk