



St Margarets Road  
Edgware  
Greater London  
HA8

Offers in Excess of £900,000

bettermove 

# St Margarets Road Edgware

Bettermove are proud to present this 6 bedroom semi-detached house in Edgware.

The property benefits from double glazing, gas central heating throughout, and complete with underfloor heating on the ground floor and basement, with off street parking available via the driveway.

The council tax band is E.

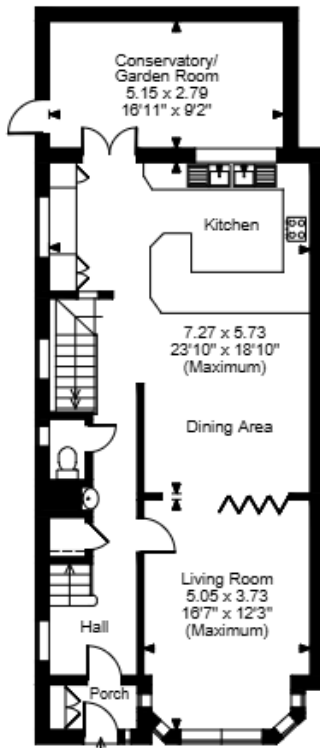
The interior of this beautifully presented property comprises a spacious living room, dining room, fitted kitchen, WC, and conservatory on the ground floor, with access to the basement floor with a private shower room. The first floor consists of three bedrooms, with one en-suite, and the family bathroom, while the second floor provides a further two bedrooms and an additional bathroom. The exterior boasts a private rear garden, perfect for enjoying the summer months, as well as a versatile outbuilding.

Located in the popular town of Edgware, the property is close to a range of amenities, including shops, supermarkets, restaurants, pubs, and schools. Excellent transport connections can be found from Edgware train station, a variety of local bus routes, and quick access to the M1.

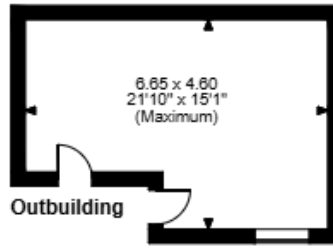
This exciting opportunity should not be missed. All enquiries can be made through Bettermove.



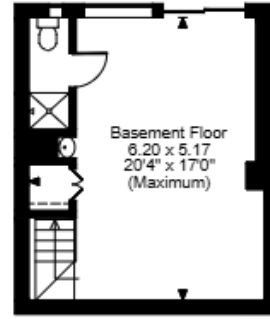
St. Margarets Road, Edgware  
 Approximate Gross Internal Area  
 Main House = 2123 Sq Ft/197 Sq M  
 Outbuilding = 289 Sq Ft/27 Sq M  
 Total = 2412 Sq Ft/224 Sq M



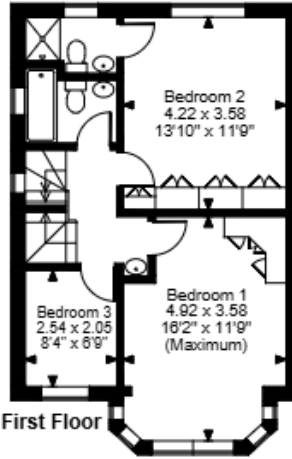
Ground Floor



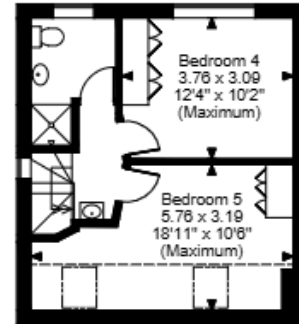
Outbuilding



Basement



First Floor



Second Floor

FOR ILLUSTRATIVE PURPOSES ONLY - NOT TO SCALE

The position & size of doors, windows, appliances and other features are approximate only.

□ □ □ □ Denotes restricted head height

© ehouse. Unauthorised reproduction prohibited. Drawing ref. dig/8694847/CGI



20-22 Bridge End, Leeds, LS1 4DJ  
t: 0330 004 0050 e: hello@bettermove.co.uk  
[www.bettermove.co.uk](http://www.bettermove.co.uk)