



**Richmond Street
Burton-on-Trent
Staffordshire
DE14 2JW**

Offers In Excess Of £119,000

bettermove

Richmond Street Burton-on-Trent

Bettermove are proud to present this 2 bedroom terraced house in Burton-on-Trent available with no forward chain.

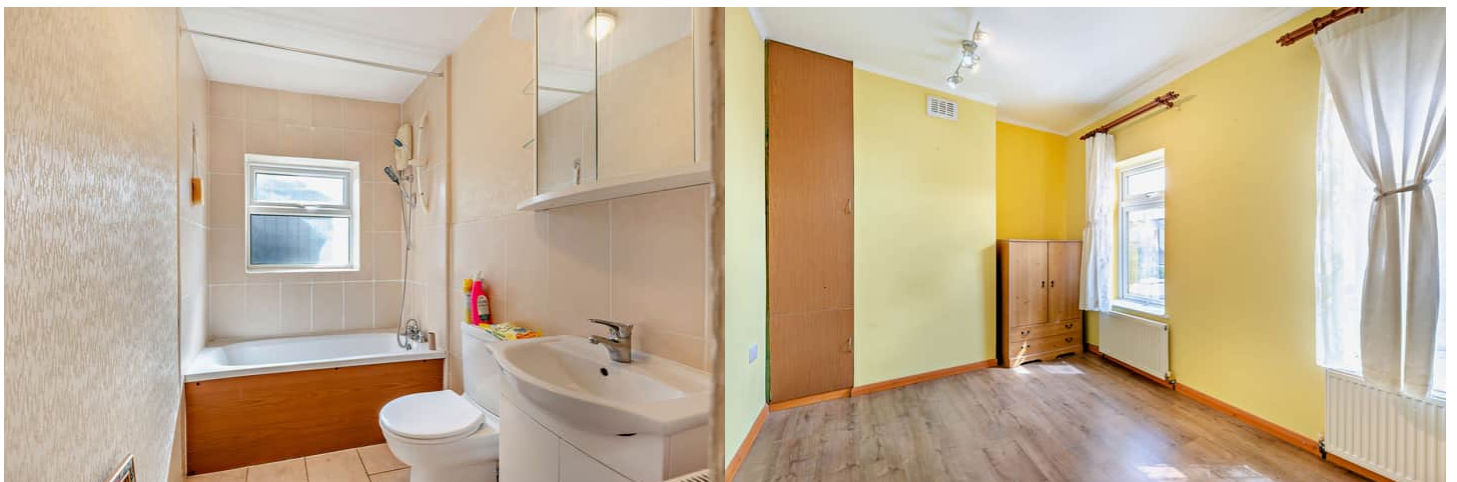
The property benefits from double glazing, gas central heating throughout and has on street parking available.

The council tax band is A.

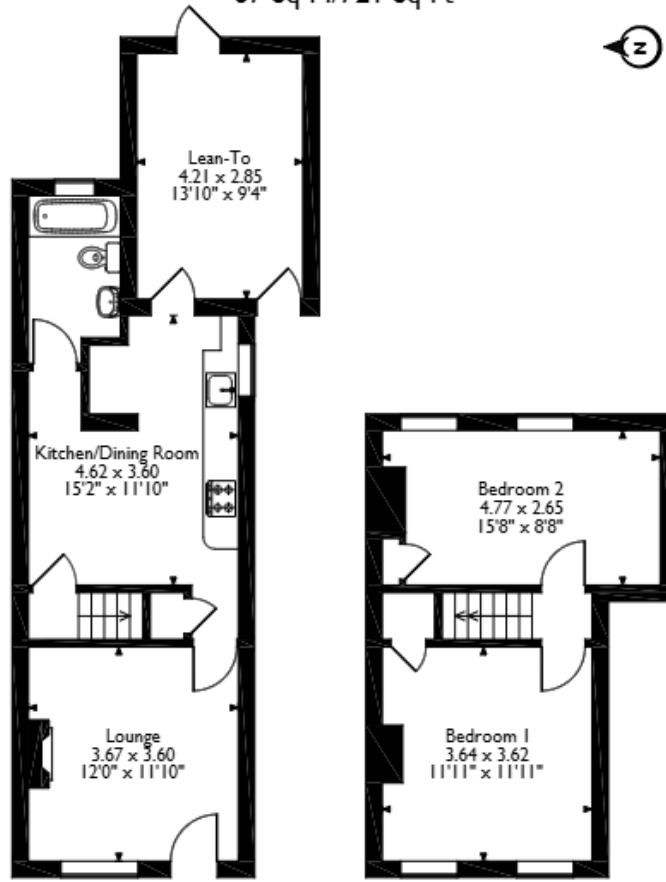
The interior of this property comprises a spacious living room, family bathroom and fitted kitchen/diner on the ground floor. The first floor consists of 2 bedrooms. The exterior boasts a private rear yard, perfect for enjoying the summer months.

Located in the popular town of Burton-on-Trent, the property is close to a range of amenities, including shops, supermarkets, restaurants and pubs. Excellent transport connections can be found from the A5121, A38 and Burton-on-Trent train station.

This exciting opportunity should not be missed. All enquiries can be made through Bettermove.



Richmond Street, Burton-on-Trent, Staffordshire
Approximate Gross Internal Area
67 Sq M/721 Sq Ft



Ground Floor

First Floor

Please note that the location of doors, windows and other items are approximate and this floorplan is to be used for illustrative purposes only. Unauthorized reproduction is prohibited.



20-22 Bridge End, Leeds, LS1 4DJ
t: 0330 004 0050 e: hello@bettermove.co.uk
www.bettermove.co.uk