



London Apprentice
St Austell
Cornwall
PL26 7AR

Offers In Excess Of £180,000

bettermove 

St Austell

Bettermove are proud to present this 2 bedroom terraced house in St Austell available with no forward chain.

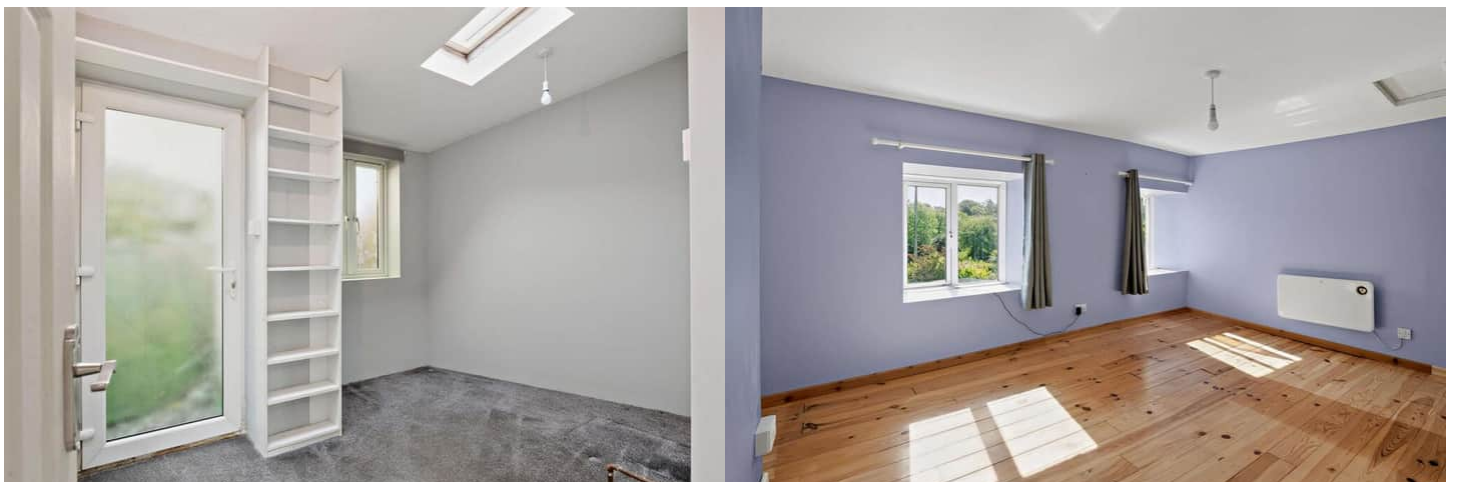
The property benefits from double glazing, electric heating throughout and has off street parking available via the front of the property.

The council tax band is B.

The interior of this beautifully presented property comprises a spacious living room, kitchen/dining room, utility room with w/c and study/3rd bedroom on the ground floor. The first floor consists of 2 bedrooms and the family bathroom. The exterior boasts a private garden, perfect for enjoying the summer months.

Located in the popular town of St Austell, the property is close to a range of amenities, including shops, supermarkets, restaurants and pubs. The property is within walking distance to Pentewan Beach. Excellent transport connections can be found from the A390 and local bus routes.

This exciting opportunity should not be missed. All enquiries can be made through Bettermove.



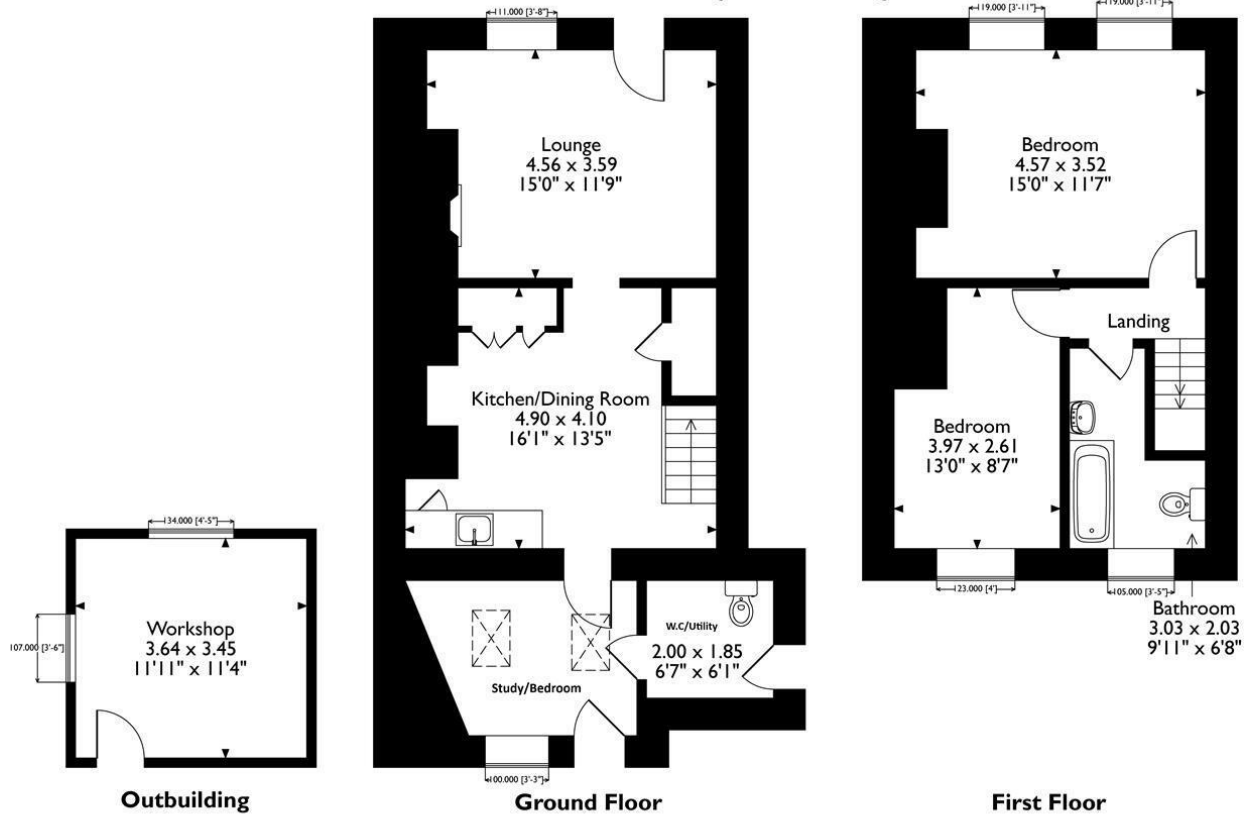
Heartsease Cottage, London Apprentice, St. Austell

Approximate Gross Internal Area

Main House = 990 SQFT/92 SQM

Outbuilding = 140 SQFT/13 SQM

Total = 1130 SQFT/105 SQM



Outbuilding

Ground Floor

First Floor

Please note that the location of doors, windows and other items are approximate and this floorplan is to be used for illustrative purposes only. Unauthorized reproduction is prohibited.



20-22 Bridge End, Leeds, LS1 4DJ
t: 0330 004 0050 e: hello@bettermove.co.uk
www.bettermove.co.uk