



Bath Road
Cheltenham
Gloucestershire
GL53

Offers In Excess Of £515,000

bettermove 

Bath Road Cheltenham

Bettermove are proud to present this 7 bedroom terraced house in Cheltenham. Available with no forward chain.

The property is currently tenanted and it will be sold with tenants in situ for immediate investment. Rental yields can be obtained through Bettermove.

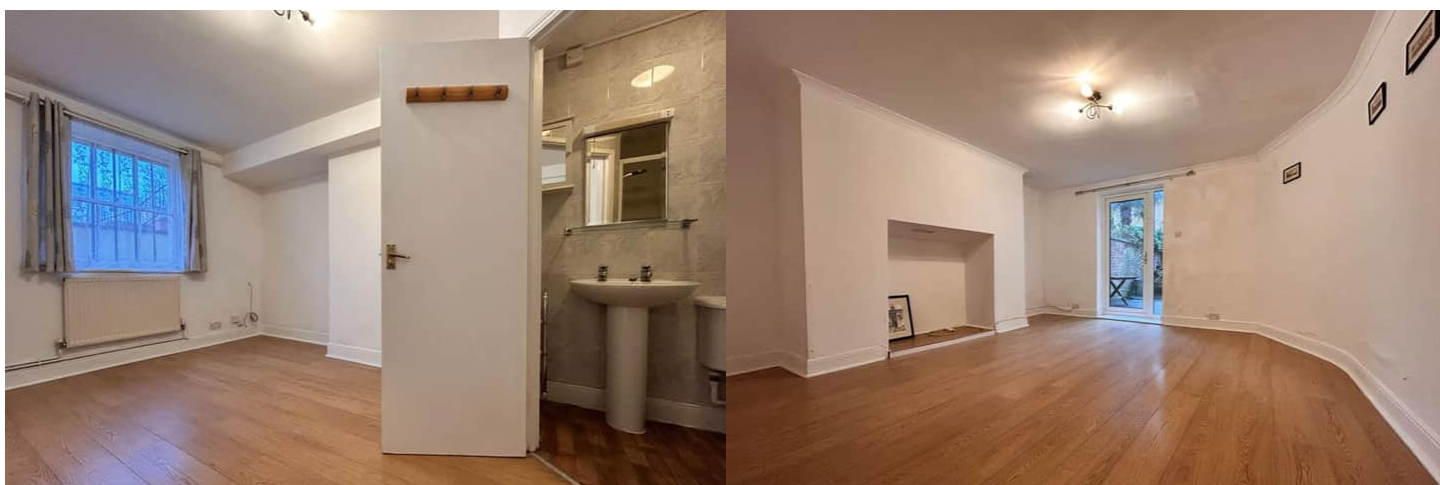
This property benefits from double glazing, and gas central heating throughout, with on street parking available.

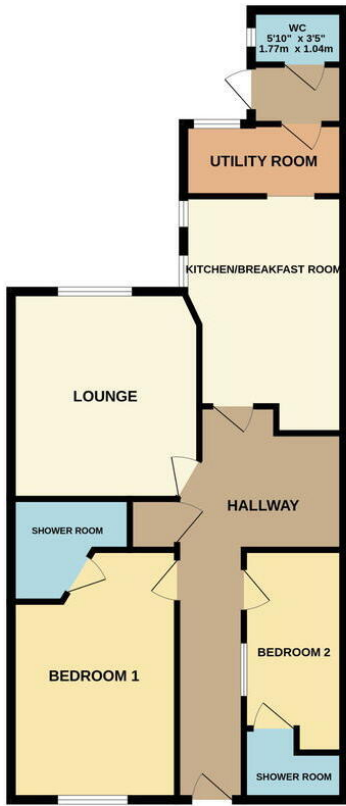
The council tax band is E.

The interior of this beautifully presented property comprises a spacious lounge, fitted kitchen/breakfast room, utility room, and the 2 bedrooms with their own shower rooms on the lower ground floor. The ground floor consists of the living room, kitchen and breakfast room and the 3rd bedroom with its own on-suite. The first floor consists of the 4 bedrooms with one of them including an on-suite and the family bathroom. The second floor consists of the second utility room, shower room and WC. The exterior boasts a private rear garden, perfect for enjoying the summer months.

Located in the popular town of Cheltenham, the property is close to a range of amenities, including shops, supermarkets, restaurants and pubs. Excellent transport connections can be found from Cheltenham Spa train station (1.4 miles), variety of bus routes and the M5.

This exciting opportunity should not be missed. All enquiries can be made through Bettermove.





LOWER GROUND FLOOR



GROUND FLOOR



1ST FLOOR



2ND FLOOR

Whilst every attempt has been made to ensure the accuracy of the floorplan contained here, measurements of doors, windows, rooms and any other items are approximate and no responsibility is taken for any error, omission or mis-statement. This plan is for illustrative purposes only and should be used as such by any prospective purchaser. The services, systems and appliances shown have not been tested and no guarantee as to their operability or efficiency can be given.
 Made with Metropix ©2025



20-22 Bridge End, Leeds, LS1 4DJ
t: 0330 004 0050 e: hello@bettermove.co.uk
www.bettermove.co.uk