



**Dukes Court**  
**Lewisham Road**  
**London**  
**SE13 7PZ**

**Offers In Excess Of £390,000**

**bettermove**

# Lewisham Road London

A SPACIOUS flat in London, available VACANT for IMMEDIATE possession and CHAIN FREE. Call to enquire!

Bettermove are proud to present this 2 bedroom flat in London available with no forward chain.

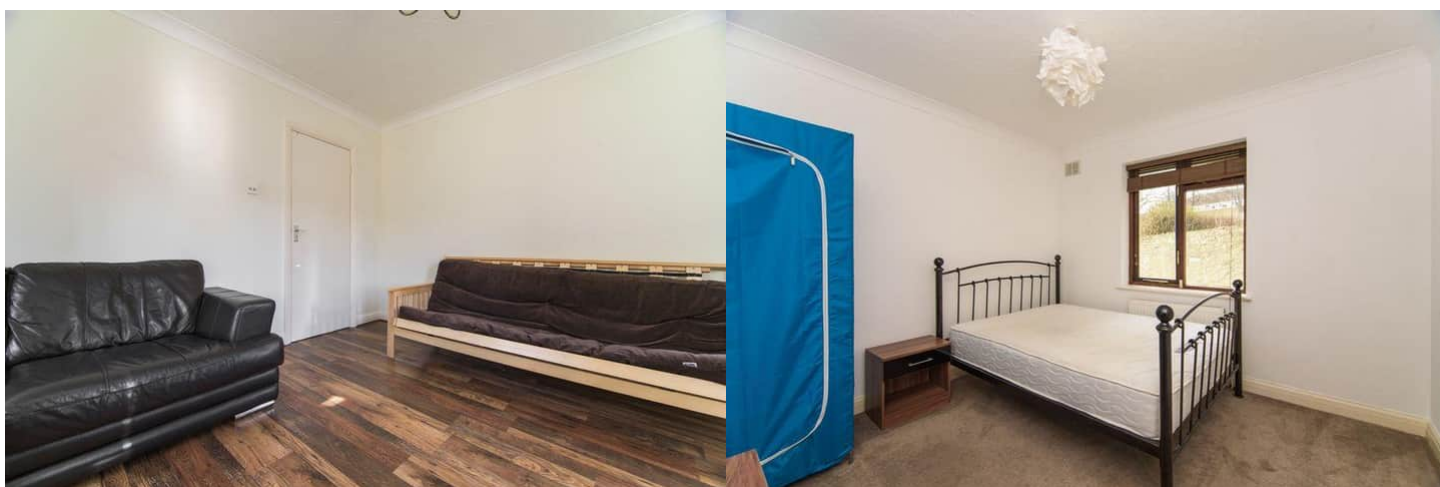
The property benefits from double glazing, gas central heating throughout and has off street parking available.

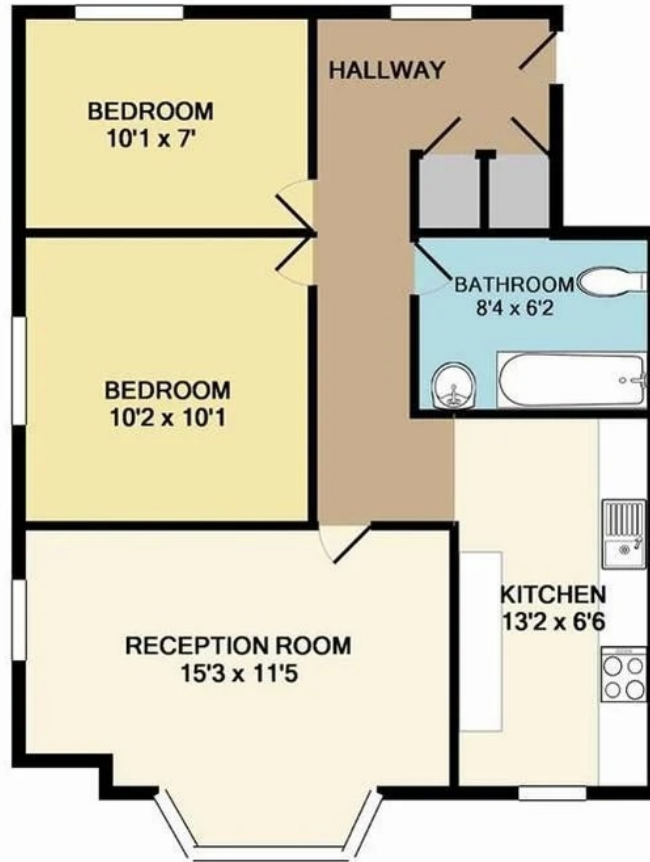
The council tax band is C.

The interior of this beautifully presented property comprises a spacious living room, fitted kitchen, 2 bedrooms and the bathroom. The exterior boasts a shared garden, perfect for enjoying the summer months.

Located in the popular area of Lewisham, the property is close to a range of amenities, including shops, supermarkets, restaurants and pubs. Excellent transport connections can be found from Lewisham train station, the A20 and many local bus routes.

This exciting opportunity should not be missed. All enquiries can be made through Bettermove.





Measurements are approximate. Not to scale. Illustrative purposes only  
Made with Metropix ©2013



20-22 Bridge End, Leeds, LS1 4DJ  
t: 0330 004 0050 e: [hello@bettermove.co.uk](mailto:hello@bettermove.co.uk)  
[www.bettermove.co.uk](http://www.bettermove.co.uk)