



Scarsdale Way
Grantham
Lincolnshire
NG31

Offers In Excess Of £115,000

bettermove

Scarsdale Way Grantham

Bettermove are proud to present this 2 bedroom flat in Grantham. Available with no forward chain.

The property is currently tenanted and it will be sold with tenants in situ for immediate investment. Rental yields can be obtained through Bettermove.

This property benefits from double glazing, and gas central heating throughout, with off street parking available via the allocated parking.

The council tax band is A.

This is a leasehold property with 115 years remaining on the lease; the ground rent and the service charge is £1,500pa.

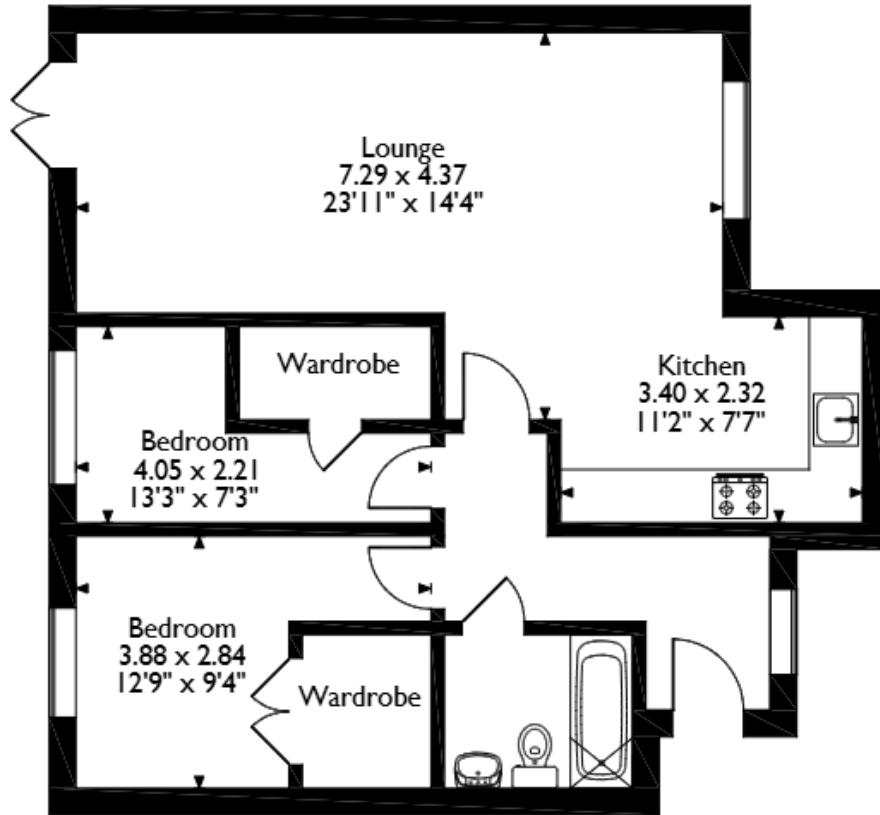
The interior of this beautifully presented property comprises a spacious living /dining room and fitted kitchen, as well as the 2 bedrooms and the family bathroom. The exterior boasts a private rear garden, perfect for enjoying the summer months.

Located in the popular town of Grantham, the property is close to a range of amenities, including shops, supermarkets, restaurants and pubs. Excellent transport connections can be found from Grantham train station (1.5 miles), variety of bus routes and the A1.

This exciting opportunity should not be missed. All enquiries can be made through Bettermove.



Scarsdale Way, Grantham, Lincolnshire
 Approximate Gross Internal Area
 66 Sq M/710 Sq Ft



Please note that the location of doors, windows and other items are approximate and this floorplan is to be used for illustrative purposes only. Unauthorized reproduction is prohibited.

Energy Efficiency Rating		
	Current	Potential
<i>Very energy efficient - lower running costs</i>		
(92+) A		
(81-91) B		
(69-80) C	79	79
(55-68) D		
(39-54) E		
(21-38) F		
(1-20) G		
<i>Not energy efficient - higher running costs</i>		
England, Scotland & Wales	EU Directive 2002/91/EC	



20-22 Bridge End, Leeds, LS1 4DJ
t: 0330 004 0050 e: hello@bettermove.co.uk
www.bettermove.co.uk