



**Red Street
Rhewl
Holywell
Flintshire
CH8 9QZ**

Offers In Excess Of £599,000

bettermove

Red Street Holywell

Bettermove are proud to present this 4 bedroom detached house in Rhewl.

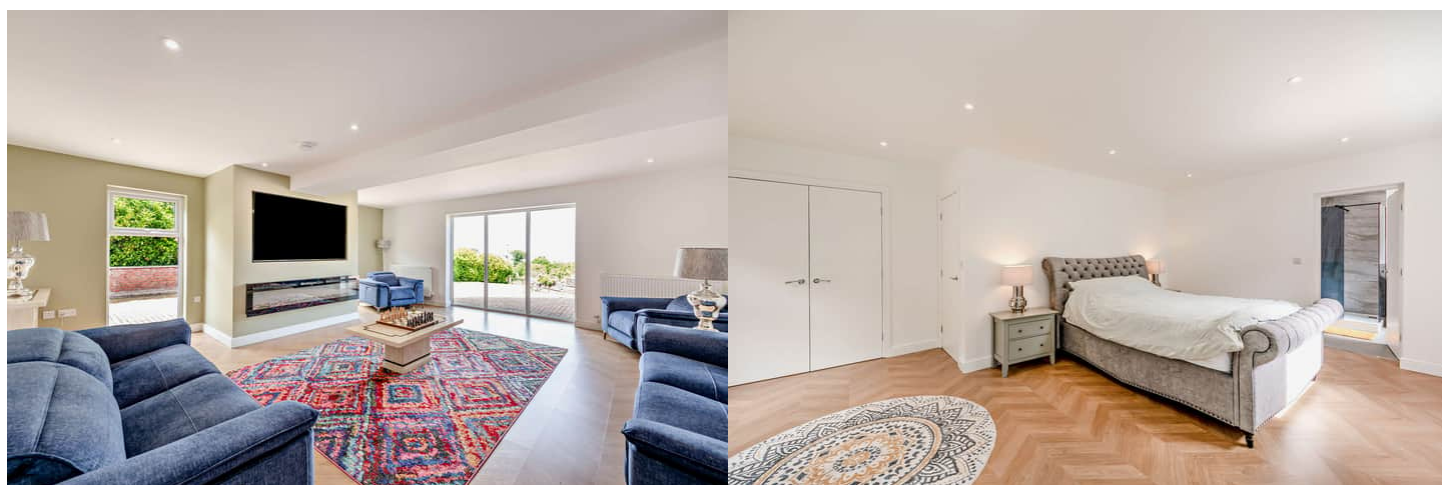
The property benefits from double glazing, gas central heating throughout and has off street parking available.

The council tax band is G.

The interior of this beautifully presented property comprises a spacious living room, dining room, sitting room, bedroom with conservatory and fitted kitchen on the ground floor. The first floor consists of 3 bedrooms, en-suite and the family bathroom. The annex comprises a kitchen/diner, living room, shower room on the ground floor. The first floor holds a double bedroom. The exterior boasts a private rear garden, perfect for enjoying the summer months.

Located in the popular village of Rhewl, the property is close to a range of amenities, including shops, supermarkets, restaurants and pubs. Excellent transport connections can be found from the A548 and bus routes.

This exciting opportunity should not be missed. All enquiries can be made through Bettermove.





20-22 Bridge End, Leeds, LS1 4DJ
t: 0330 004 0050 e: hello@bettermove.co.uk
www.bettermove.co.uk