



**Athol Green  
Halifax  
West Yorkshire  
HX3**

**Offers In Excess Of £115,000**

**bettermove**

# Athol Green Halifax

Bettermove are proud to present this 3 bedroom end of terrace house in Halifax. Available with no forward chain.

The property is currently tenanted and it will be sold with tenants in situ for immediate investment. Rental yields can be obtained through Bettermove.

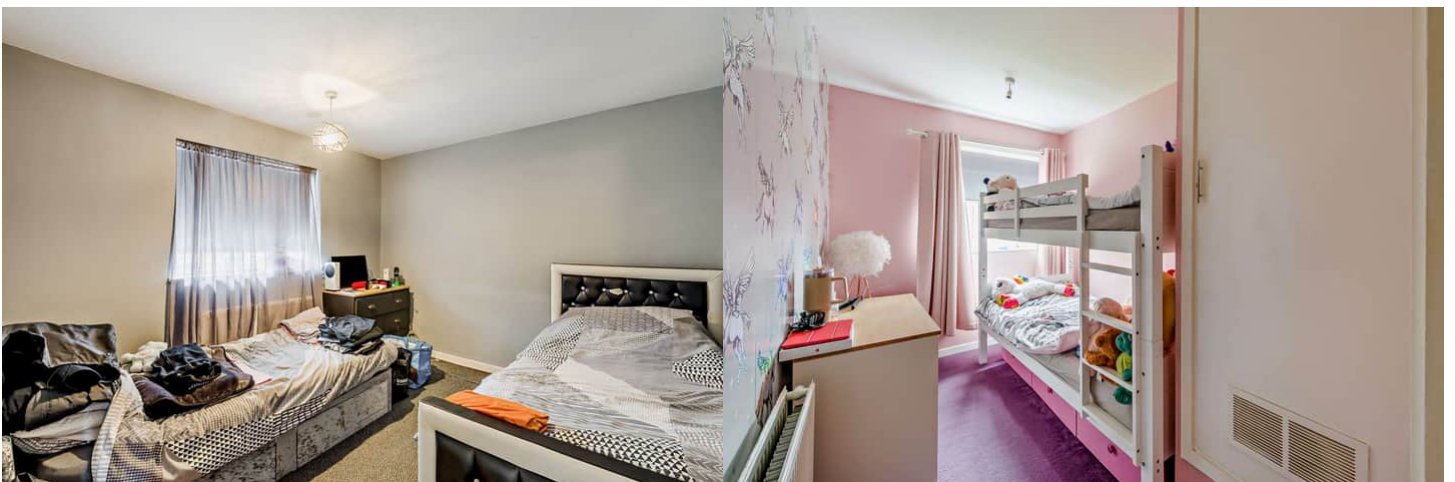
The property benefits from double glazing, and gas central heating throughout, with on street parking available.

The council tax band is A.

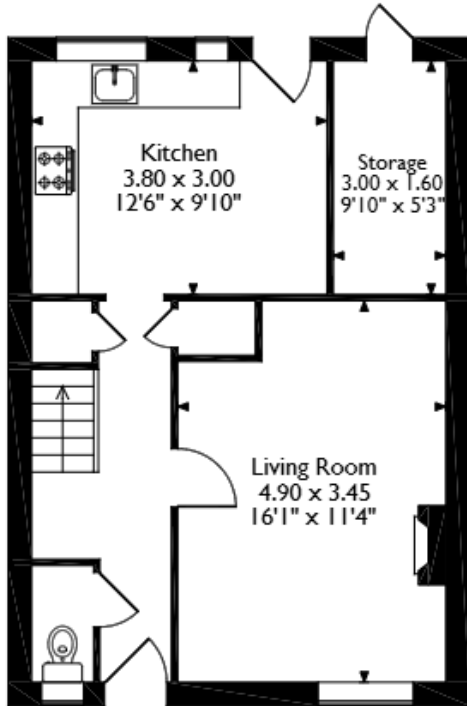
The interior of this beautifully presented property comprises a spacious living room, storage room and fitted kitchen with the dining area on the ground floor. The first floor consists of 3 bedrooms, dressing room and the family bathroom. The exterior boasts a private rear garden, perfect for enjoying the summer months.

Located in the popular town of Halifax, the property is close to a range of amenities, including shops, supermarkets, restaurants and pubs. Excellent transport connections can be found from Halifax train station (2.1 miles), variety of bus routes and the A629.

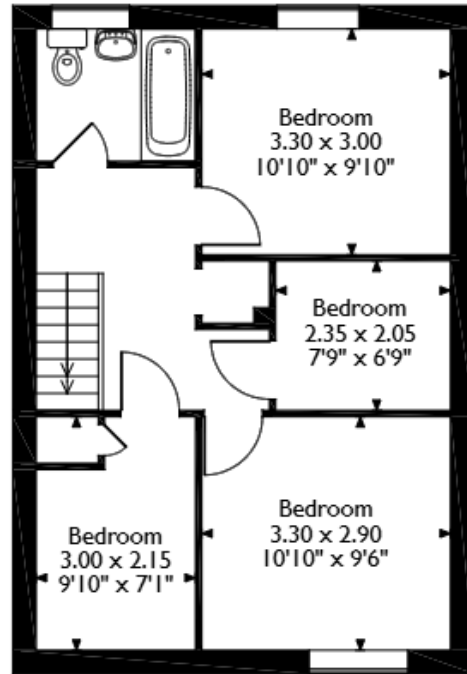
This exciting opportunity should not be missed. All enquiries can be made through Bettermove.



Athol Green, Halifax  
Approximate Gross Internal Area  
Main House = 81 Sq M/872 Sq Ft  
Outbuilding = 4 Sq M/43 Sq Ft  
Total = 85 Sq M/915 Sq Ft



**Ground Floor**



**First Floor**

Please note that the location of doors, windows and other items are approximate and this floorplan is to be used for illustrative purposes only. Unauthorized reproduction is prohibited.



20-22 Bridge End, Leeds, LS1 4DJ  
t: 0330 004 0050 e: hello@bettermove.co.uk  
[www.bettermove.co.uk](http://www.bettermove.co.uk)