



Oak Leaze
Patchway
Bristol
Gloucestershire
BS34

Offers In Excess Of £210,000

bettermove 

Oak Leaze

Bristol

Bettermove are proud to present this 2 bedroom flat in Patchway.

The property benefits from double glazing, and gas central heating throughout, with off street parking available via the two allocated spaces.

The council tax band is B.

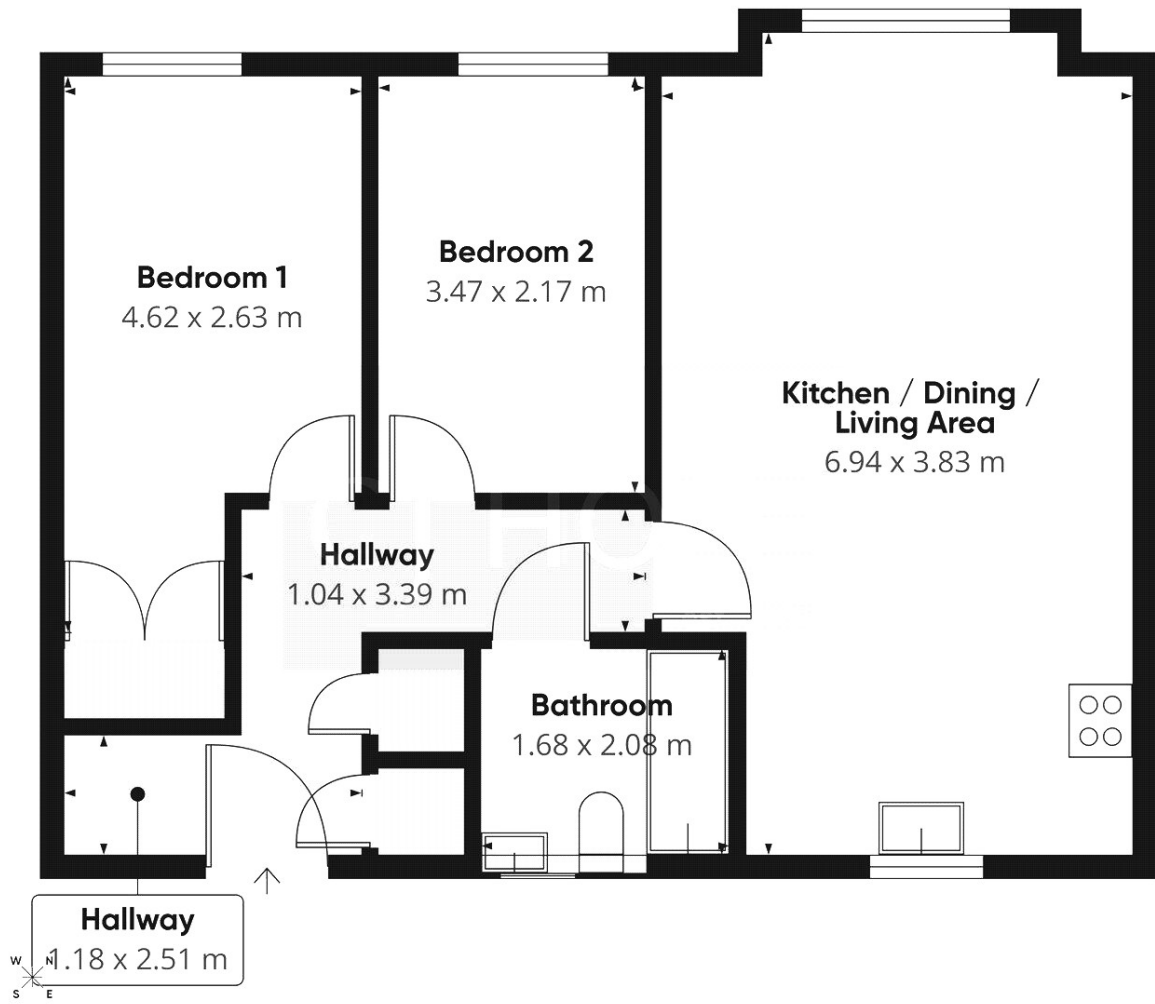
This is a leasehold property with 983 years remaining on the lease; the ground rent and management fees are £524.63pa and the service charge is £814pa.

The interior of this beautifully presented property comprises a spacious living/ dining/ fitted kitchen area, as well as the 2 bedrooms and the family bathroom.

Located in the popular town of Patchway, the property is close to a range of amenities, including shops, supermarkets, restaurants and pubs. Excellent transport connections can be found from Patchway train station (1.7 miles), variety of bus routes and the M5.

This exciting opportunity should not be missed. All enquiries can be made through Bettermove.







20-22 Bridge End, Leeds, LS1 4DJ
t: 0330 004 0050 e: hello@bettermove.co.uk
www.bettermove.co.uk