



**Brickmakers Meadows
Platt
Sevenoaks
Kent
TN15**

Offers in Excess of £230,000

bettermove

Brickmakers Meadows

Sevenoaks

Bettermove are proud to present this 1 bedroom maisonette in Platt, available with no forward chain.

The property is currently tenanted and it will be sold with tenants in situ for immediate investment. Rental yields can be obtained through Bettermove.

The property benefits from double glazing, and gas central heating throughout, with two, off road parking spaces available.

The council tax band is C.

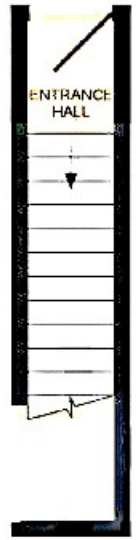
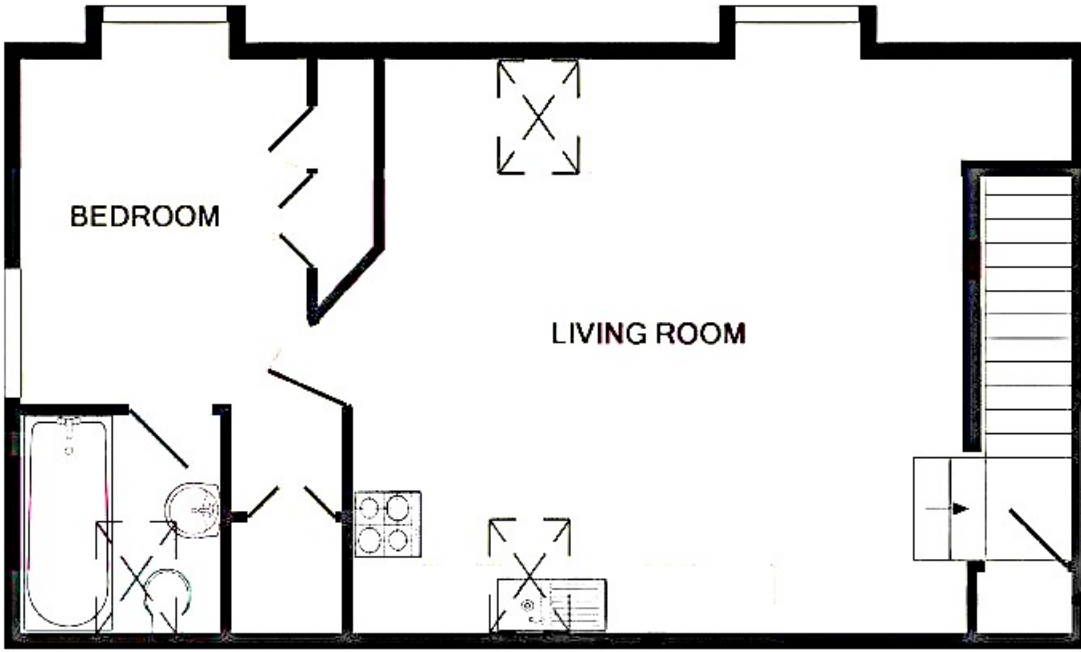
This is a leasehold property with 980 years remaining on the lease.

The interior of this beautifully presented, first floor property comprises a spacious, open-plan living/kitchen area, one double bedroom, and a family bathroom. The exterior boasts a private courtyard garden, perfect for enjoying the summer months.

Located in the popular area of Platt, Sevenoaks, the property is close to a range of amenities, including shops, supermarkets, restaurants and pubs. Excellent transport connections can be found from Borough Green & Wrotham train station, a variety of local bus routes, and quick access to the M26.

This exciting opportunity should not be missed. All enquiries can be made through Bettermove.





GROUND FLOOR

1ST FLOOR

Energy Efficiency Rating		
	Current	Potential
<i>Very energy efficient - lower running costs</i>		
(92+) A		
(81-91) B		
(69-80) C	72	74
(55-68) D		
(39-54) E		
(21-38) F		
(1-20) G		
<i>Not energy efficient - higher running costs</i>		
England, Scotland & Wales	EU Directive 2002/91/EC	



20-22 Bridge End, Leeds, LS1 4DJ
t: 0330 004 0050 e: hello@bettermove.co.uk
www.bettermove.co.uk