

Burford Way
Hitchin
Hertfordshire
SG5

Offers in Excess of £390,000

bettermove

Burford Way Hitchin

Bettermove are proud to present this 3 bedroom semi-detached house in Hitchin.

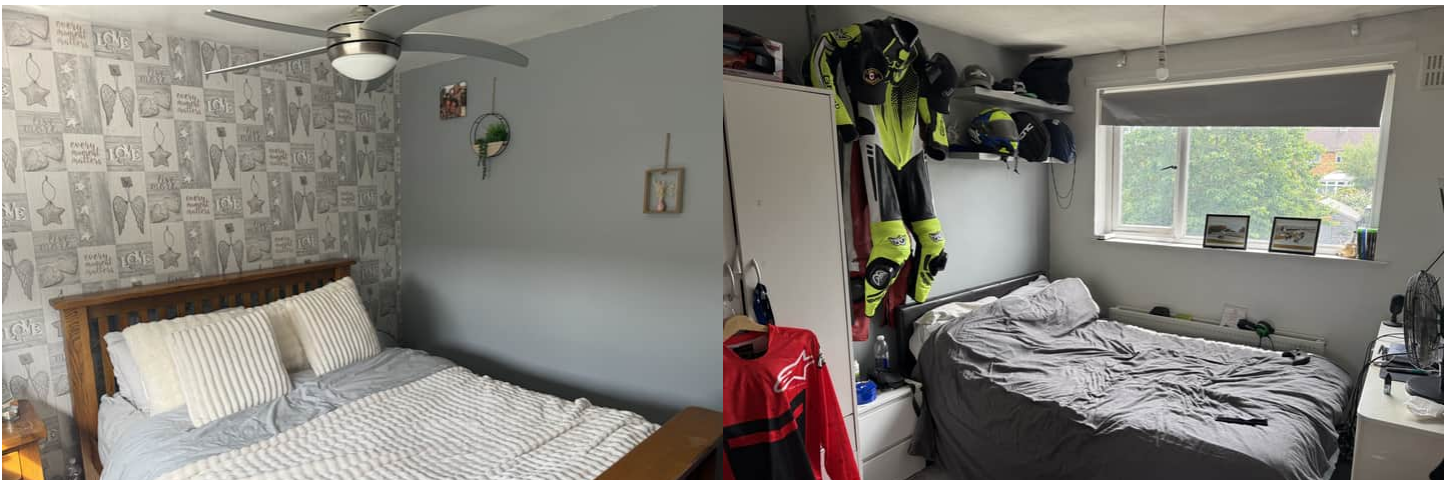
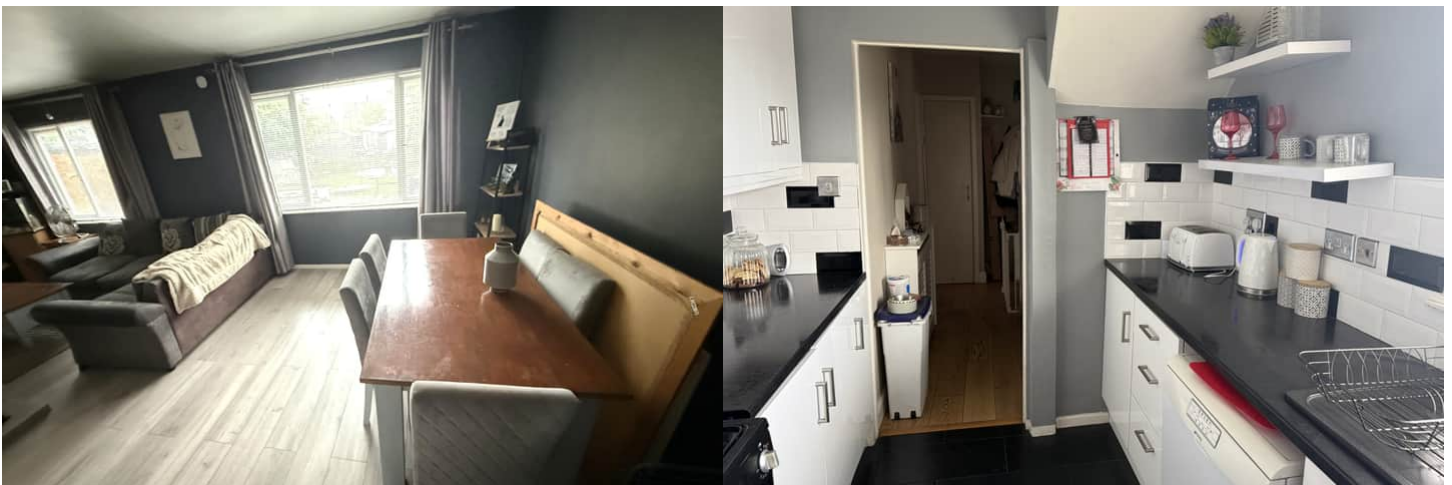
This property benefits from double glazing, and gas central heating throughout, with off road parking available via the driveway.

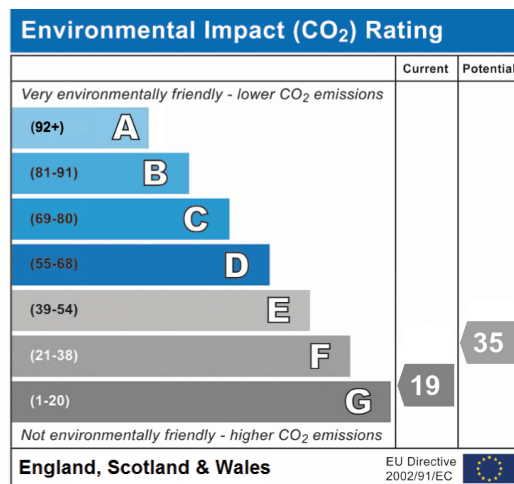
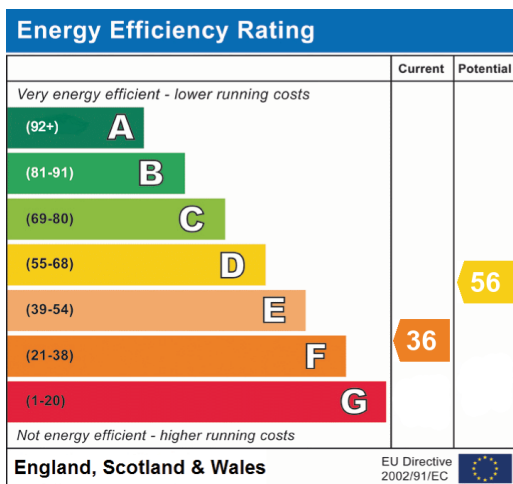
The council tax band is C.

The interior of this beautifully presented property comprises a spacious living/dining room, and a fitted kitchen on the ground floor. The first floor consists of three bedrooms, and the family bathroom, with a separate WC. The exterior boasts an outbuilding, and a large, private rear garden, laid with both patio and lawn areas, perfect for enjoying the summer months.

Located in the popular town of Hitchin, the property is close to a range of amenities, including shops, supermarkets, restaurants, pubs, and schools. Excellent transport links can be found from Hitchin train station, a variety of local bus routes, and quick access to the A1(M).

This exciting opportunity should not be missed! All enquiries can be made through Bettermove.







20-22 Bridge End, Leeds, LS1 4DJ
t: 0330 004 0050 e: hello@bettermove.co.uk
www.bettermove.co.uk