



**Godfrey Street  
Netherfield  
Nottingham  
NG4**

**Offers In Excess Of £145,000**

**bettermove**

# Godfrey Street Nottingham

Bettermove are proud to present this 2 bedroom terraced house in Netherfield.

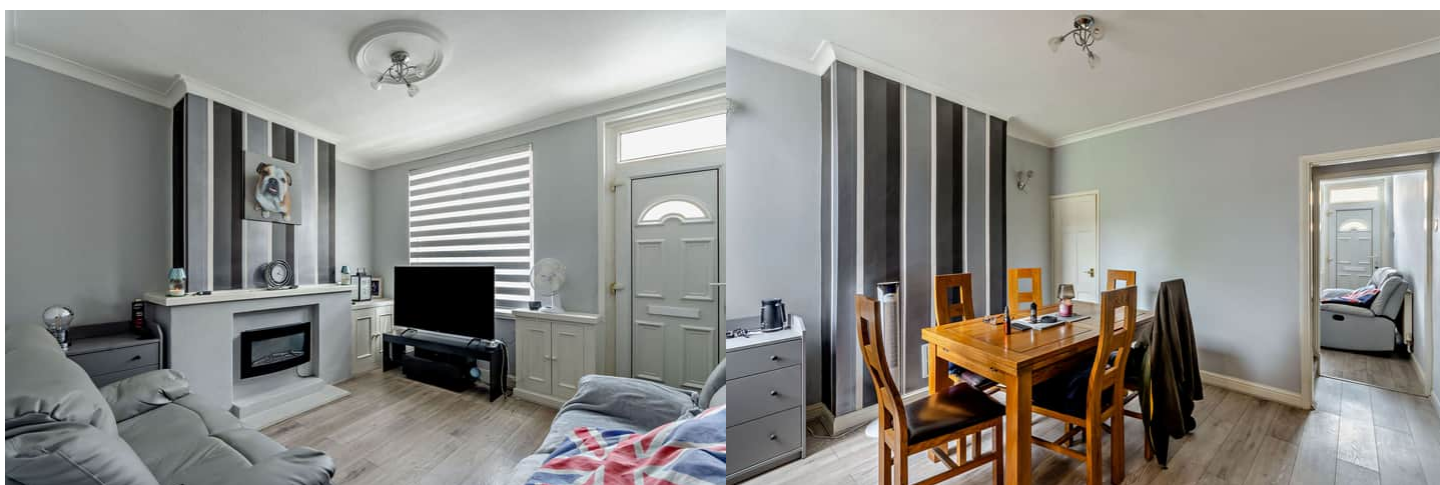
The property benefits from double glazing, and gas central heating throughout, with on street parking available.

The council tax band is A.

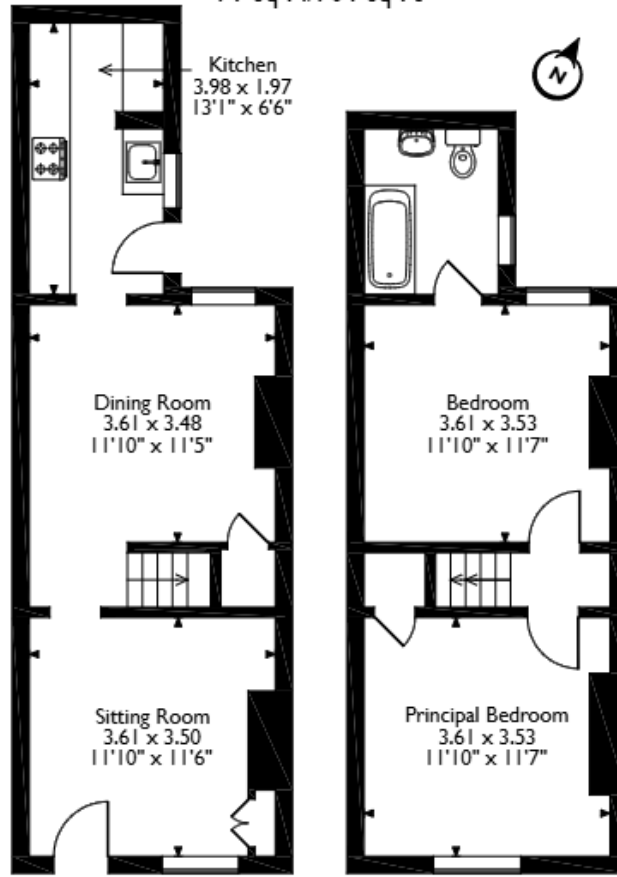
The interior of this beautifully presented property comprises a spacious living room, dining room and fitted kitchen on the ground floor. The first floor consists of 2 bedrooms and the family bathroom. The exterior boasts a private rear garden, perfect for enjoying the summer months.

Located in the popular town of Netherfield, the property is close to a range of amenities, including shops, supermarkets, restaurants and pubs. Excellent transport connections can be found from Netherfield train station (0.7 miles), variety of bus routes and the A60.

This exciting opportunity should not be missed. All enquiries can be made through Bettermove.



Godfrey Street, Netherfield, Nottingham, Nottinghamshire  
Approximate Gross Internal Area  
71 Sq M/764 Sq Ft



**Ground Floor**

**First Floor**

Please note that the location of doors, windows and other items are approximate and this floorplan is to be used for illustrative purposes only. Unauthorized reproduction is prohibited.



20-22 Bridge End, Leeds, LS1 4DJ  
t: 0330 004 0050 e: hello@bettermove.co.uk  
[www.bettermove.co.uk](http://www.bettermove.co.uk)