



**Somerville Close
Waddington
Lincoln
LN5**

Offers in Excess of £320,000

bettermove

Somerville Close Lincoln

Bettermove are proud to present this 4 bedroom detached bungalow in Waddington.

The property benefits from double glazing, and gas central heating throughout, with off street parking available via the driveway and garage.

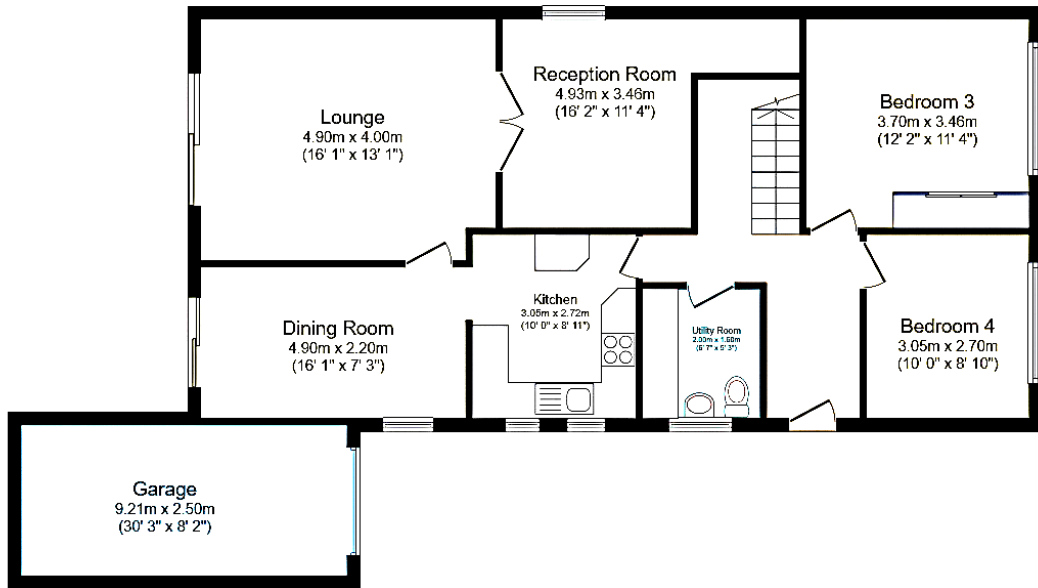
The council tax band is B.

The interior of this beautifully presented property comprises a two spacious reception rooms, dining room, fitted kitchen, utility room/WC, and two bedrooms. The further two bedrooms, alongside a family bathroom, are located on the first floor. The exterior boasts a private rear garden, with both patio and lawn areas, perfect for enjoying the summer months.

Located in the sought after village of Waddington, Lincoln, the property is close to a range of amenities, including shops, supermarkets, restaurants, pubs, schools, and Waddington Air Force Base. Excellent transport connections can be found from Hykeham train station, a variety of local bus routes, and quick access to the A15.

This exciting opportunity should not be missed. All enquiries can be made through Bettermove.





Ground Floor



162.8 sq.m. (1,753 sq.ft.) approx

First Floor

Energy Efficiency Rating		
	Current	Potential
Very energy efficient - lower running costs		
(92+) A		
(81-91) B		
(69-80) C	74	80
(55-68) D		
(39-54) E		
(21-38) F		
(1-20) G		
Not energy efficient - higher running costs		
England, Scotland & Wales	EU Directive 2002/91/EC	



20-22 Bridge End, Leeds, LS1 4DJ
t: 0330 004 0050 e: hello@bettermove.co.uk
www.bettermove.co.uk