



**Summerway  
Exeter  
Devon  
EX4**

**Offers in Excess of £305,000**

**bettermove**

# Summerway

## Exeter

Bettermove are proud to present this 3 bedroom semi-detached house in Exeter.

This property benefits from double glazing, and gas central heating throughout, with off road parking available via the driveway.

The council tax band is C.

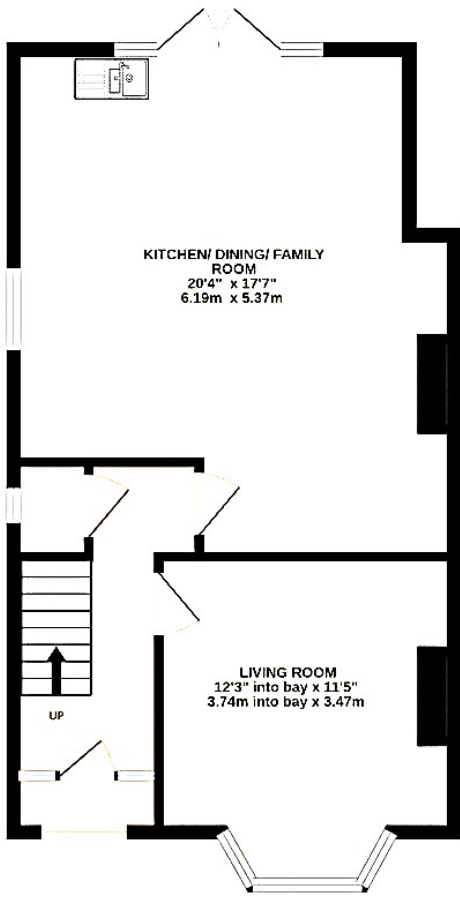
The interior of this beautifully presented property comprises a spacious living room, and an open-plan kitchen/dining/family room on the ground floor, with patio doors leading to the garden. The first floor consists of three bedrooms, including two doubles, and one single, alongside the family bathroom. The exterior boasts a private rear garden, perfect for enjoying the summer months, alongside a car port, and single garage.

Located in the popular city of Exeter, the property is close to a range of amenities, including shops, supermarkets, restaurants, pubs, and schools. Excellent transport links can be found from Polsloe Bridge train station, a variety of local bus routes, and quick access to the M5.

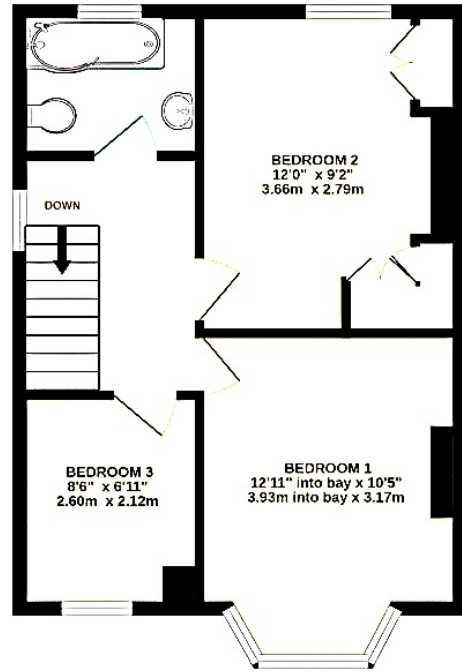
This exciting opportunity should not be missed! All enquiries can be made through Bettermove.



GROUND FLOOR



1ST FLOOR





20-22 Bridge End, Leeds, LS1 4DJ  
t: 0330 004 0050 e: hello@bettermove.co.uk  
[www.bettermove.co.uk](http://www.bettermove.co.uk)