

**Telford Street  
Barrow-in-Furness  
Cumbria  
LA14**

**Offers in Excess of £80,000**

**bettermove**

# Telford Street

## Barrow-in-Furness

Bettermove are proud to present this 2 bedroom terraced house in Barrow-in-Furness, available with no forward chain.

This is currently a tenanted property, and it will be sold with tenants in situ for immediate investment. Rental yields can be obtained through Bettermove.

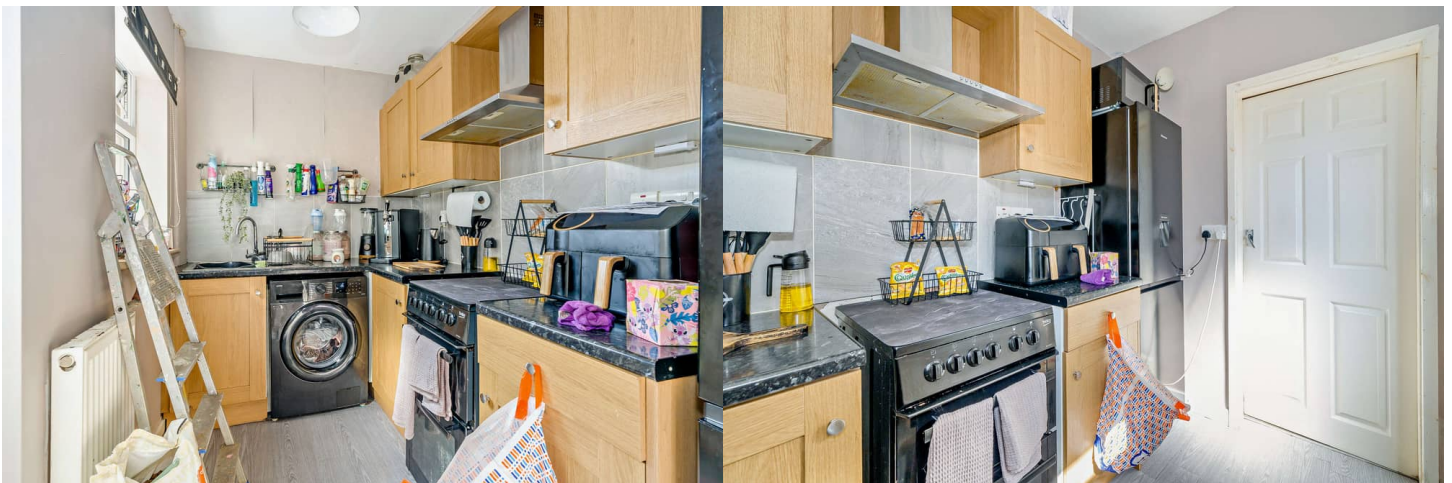
The property benefits from double glazing & gas central heating throughout, with on street parking available.

The council tax band is A.

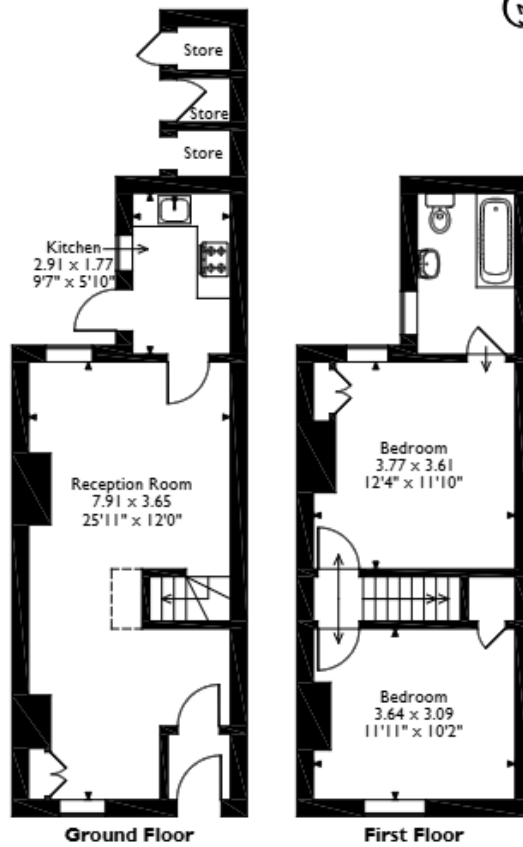
The interior of this well presented property comprises two spacious reception rooms, and a fitted kitchen on the ground floor. The first floor consists of two double bedrooms, and the family bathroom. Outside, the property boasts a private rear garden, complete with an outbuilding, perfect for enjoying the summer months.

Located in the popular town of Barrow-in-Furness, the property is close to a range of amenities, including shops, supermarkets, restaurants, pubs, schools, and a short distance to the seafront. Excellent transport links can be found from Barrow-in-Furness train station, a variety of local bus routes, and quick access to the A590, leading to the M6.

This exciting opportunity should not be missed! All enquiries can be made through Bettermove.



Telford Street, Barrow-in-Furness  
Approximate Gross Internal Area  
Main House = 68 Sq M/732 Sq Ft  
Outside Store = 3 Sq M/32 Sq Ft  
Total = 71 Sq M/764 Sq Ft



Please note that the location of doors, windows and other items are approximate and this floorplan is to be used for illustrative purposes only. Unauthorized reproduction is prohibited.



20-22 Bridge End, Leeds, LS1 4DJ  
t: 0330 004 0050 e: hello@bettermove.co.uk  
[www.bettermove.co.uk](http://www.bettermove.co.uk)