



Melton Road
Birmingham
West Midlands
B14

Offers in Excess of £325,000

bettermove

Melton Road Birmingham

Bettermove are proud to present this 3 bedroom terraced house in Birmingham.

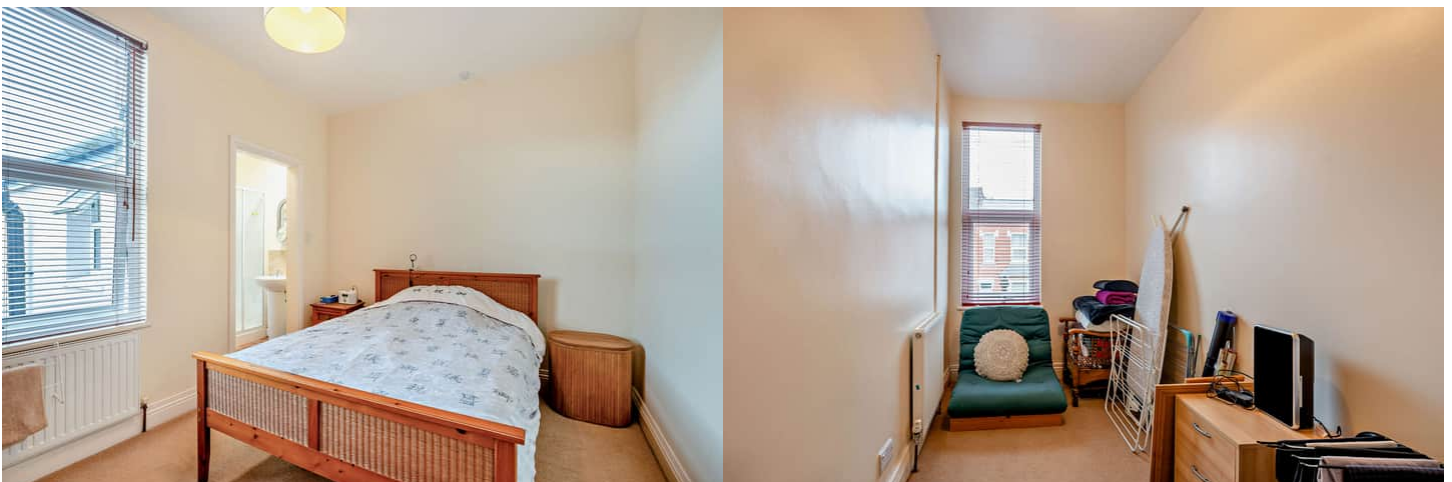
This property benefits from newly upgraded double glazing, and gas central heating throughout, with on street parking available.

The council tax band is C.

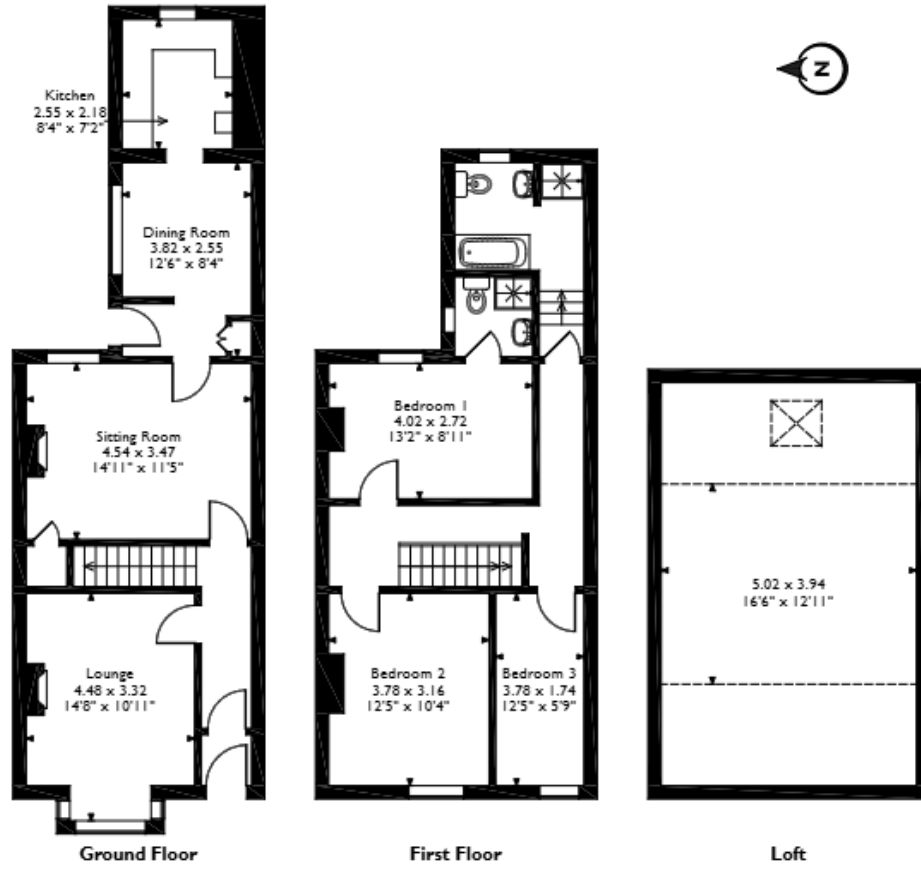
The interior of this beautifully presented property comprises two spacious living rooms, fitted kitchen/diner on the ground floor. The first floor consists of three bedrooms, with the master bedroom benefitting from a private en-suite, alongside the family bathroom, with the additional benefit of a boarded loft room, ideal for additional storage. The exterior boasts a private rear garden, accessible via a shared passageway from the front, with both patio and lawn areas, perfect for enjoying the summer months.

Located in the popular suburb of Kings Heath, Birmingham, the property is close to a range of amenities, including shops, supermarkets, restaurants, pubs, and schools. Excellent transport links can be found from Kings Heath train station, a variety of local bus routes, and quick access to the A435.

This exciting opportunity should not be missed! All enquiries can be made through Bettermove.



Melton Road, Birmingham
 Approximate Gross Internal Area
 127 Sq M/1367 Sq Ft



Please note that the location of doors, windows and other items are approximate and this floorplan is to be used for illustrative purposes only. Unauthorized reproduction is prohibited.

Energy Efficiency Rating		
	Current	Potential
<i>Very energy efficient - lower running costs</i>		
(92+) A		
(81-91) B		84
(69-80) C		
(55-68) D	67	
(39-54) E		
(21-38) F		
(1-20) G		
<i>Not energy efficient - higher running costs</i>		
England, Scotland & Wales	EU Directive 2002/91/EC	



20-22 Bridge End, Leeds, LS1 4DJ
t: 0330 004 0050 e: hello@bettermove.co.uk
www.bettermove.co.uk