



**Sefton Avenue
Wisbech
Cambridgeshire
PE13**

Offers In Excess Of £230,000

bettermove

Sefton Avenue

Wisbech

Bettermove are proud to present this 4 bedroom semi-detached house in Wisbech.

This property benefits from double glazing, and gas central heating throughout, with off road parking available via the driveway.

The council band is A.

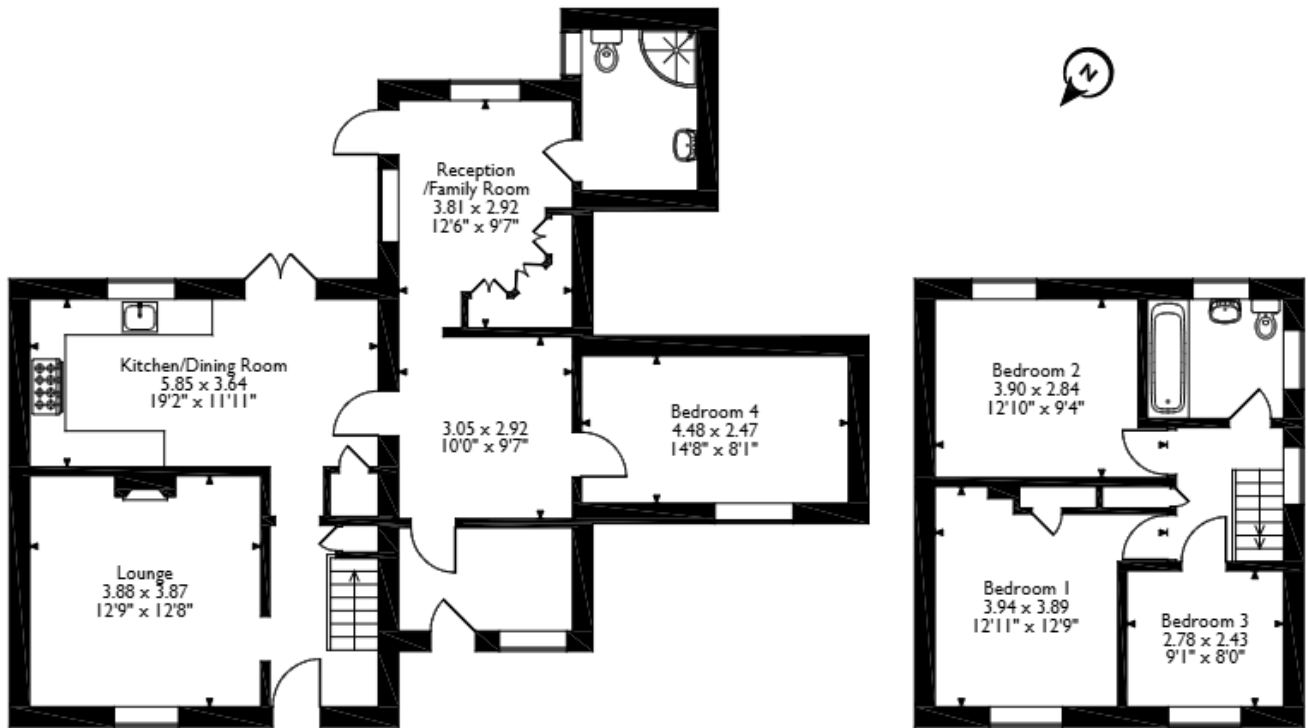
The interior of this beautifully presented property comprises two spacious reception rooms, fitted kitchen/diner, one double bedroom, and WC on the ground floor. The first floor consists of three double bedrooms, and the family bathroom. Outside, the property boasts a lawned front garden, and a private rear garden, complete with a garden shed, perfect for enjoying the summer months.

Located in the popular town of Wisbech, the property is close to a range of amenities, including shops, supermarkets, restaurants, pubs, and schools. Excellent transport links can be found from March train station, a variety of local bus routes, and quick access to the A47.

This exciting opportunity should not be missed! All enquiries can be made through Bettermove.



Sefton Avenue, Wisbech, Cambridgeshire
 Approximate Gross Internal Area
 125 Sq M/1346 Sq Ft



Ground Floor

First Floor

Please note that the location of doors, windows and other items are approximate and this floorplan is to be used for illustrative purposes only. Unauthorized reproduction is prohibited.

Energy Efficiency Rating		
	Current	Potential
<i>Very energy efficient - lower running costs</i>		
(92+) A		
(81-91) B		
(69-80) C		80
(55-68) D	67	
(39-54) E		
(21-38) F		
(1-20) G		
<i>Not energy efficient - higher running costs</i>		
England, Scotland & Wales	EU Directive 2002/91/EC	



20-22 Bridge End, Leeds, LS1 4DJ
t: 0330 004 0050 e: hello@bettermove.co.uk
www.bettermove.co.uk