



Front Street  
Croxdale  
Durham  
DH6

Offers In Excess Of £100,000

bettermove

# Front Street Durham

Bettermove are proud to present this 2 bedroom, grade II listed terraced house in Croxdale, available with no forward chain.

This property is currently tenanted, and it will be sold with tenanted in situ for immediate investment. Rental yields can be obtained through Bettermove.

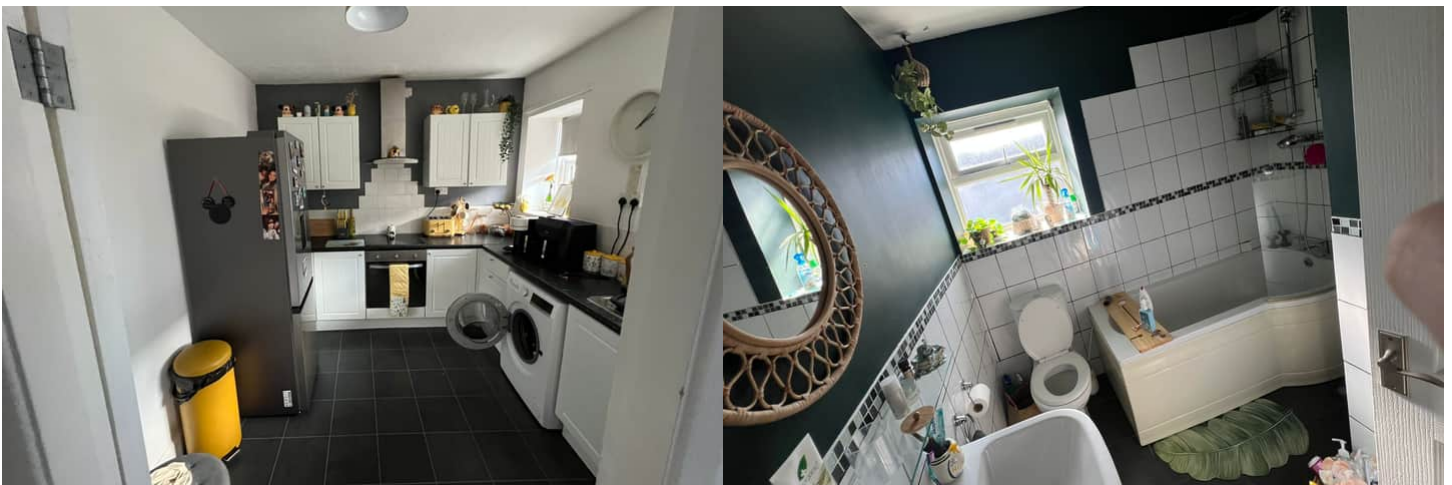
The property benefits from gas central heating, with partial double glazing, and on street parking available.

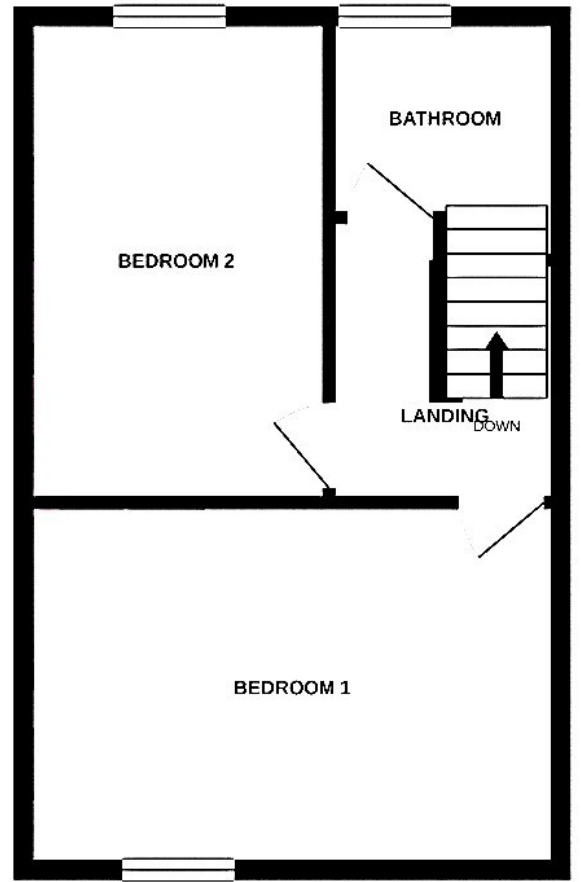
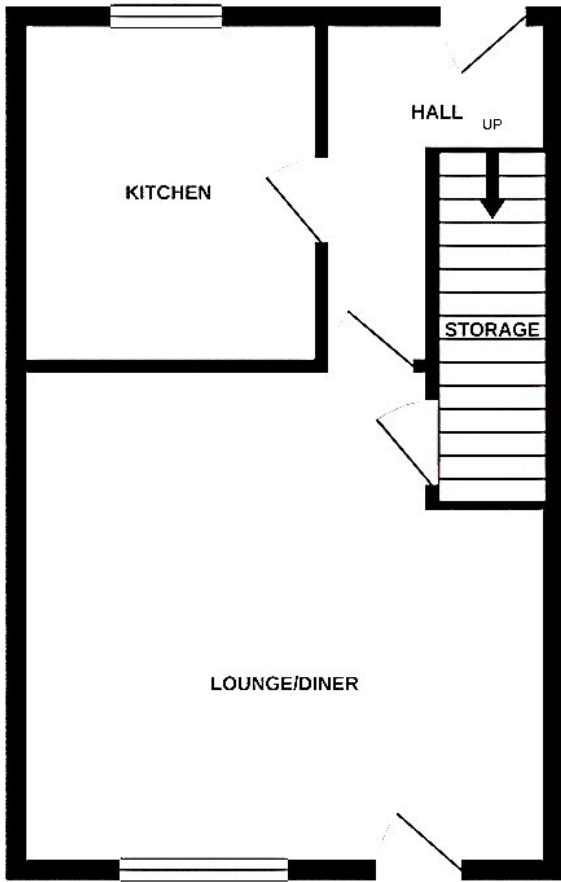
The council tax band is D.

The interior of this beautifully presented property comprises a spacious living/dining room, and a fitted kitchen on the ground floor. The first floor consists of two double bedrooms, alongside the family bathroom. The exterior boasts a large, front lawned garden, and a private rear yard, perfect for enjoying the summer months.

Located in the sought after village of Croxdale, Durham, the property is close to a range of amenities, including shops, supermarkets, restaurants, pubs, and schools. Excellent transport links can be found from Durham Train Station, a variety of local bus routes, and quick access to the A1(M).

This exciting opportunity should not be missed! All enquiries can be made through Bettermove.





Energy Efficiency Rating		
	Current	Potential
<i>Very energy efficient - lower running costs</i>		
(92+) <b>A</b>		
(81-91) <b>B</b>		
(69-80) <b>C</b>		<b>80</b>
(55-68) <b>D</b>	<b>69</b>	
(39-54) <b>E</b>		
(21-38) <b>F</b>		
(1-20) <b>G</b>		
<i>Not energy efficient - higher running costs</i>		
<b>England, Scotland &amp; Wales</b>	EU Directive 2002/91/EC	



20-22 Bridge End, Leeds, LS1 4DJ  
t: 0330 004 0050 e: hello@bettermove.co.uk  
[www.bettermove.co.uk](http://www.bettermove.co.uk)