



**Godolphin Close
Freshbrook
Swindon
Wiltshire
SN5**

Offers in Excess of £240,000

bettermove

Godolphin Close Swindon

Bettermove are proud to present this 4 bedroom terraced house in Freshbrook, available with no forward chain.

This property is currently operating as a tenanted HMO property, and it will be sold with tenants in situ for immediate investment. Rental yields can be made through Bettermove.

The property benefits from double glazing, and gas central heating throughout, with off road parking available via the double driveway.

The council tax band is B.

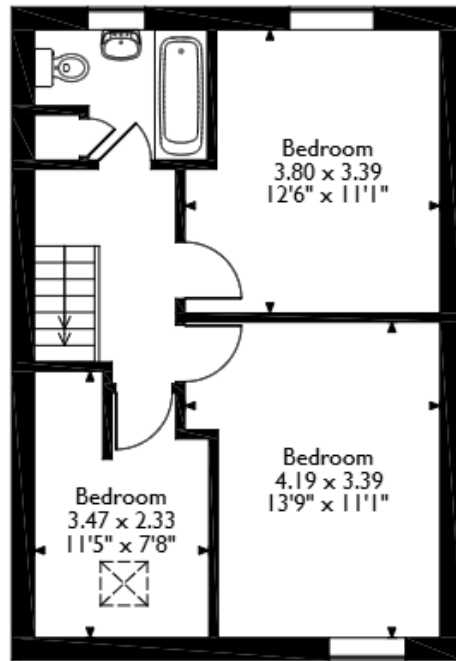
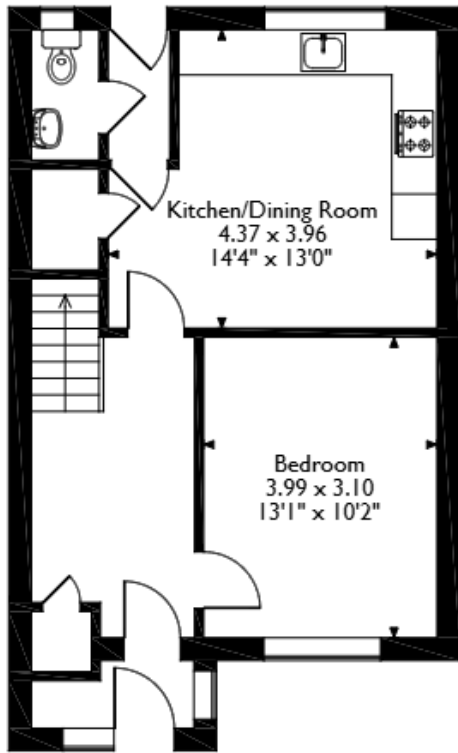
The interior of this well presented property comprises a fitted kitchen/dining area, WC, and one double bedroom on the ground floor. The first floor consists of three double bedrooms, and a family bathroom. The exterior boasts a private rear garden, with both patio and lawn areas, perfect for enjoying the summer months.

Located in the popular suburb of Freshbrook, Swindon, the property is close to a range of amenities, including shops, supermarkets, restaurants, and pubs. Excellent transport links can be found from Swindon train station, a variety of local bus routes, and quick access to the M4.

This exciting opportunity should not be missed! All enquiries can be made through Bettermove.



Godolphin Close, Freshbrook, Swindon
 Approximate Gross Internal Area
 89 Sq M/958 Sq Ft



Ground Floor

First Floor

Please note that the location of doors, windows and other items are approximate and this floorplan is to be used for illustrative purposes only. Unauthorized reproduction is prohibited.

Energy Efficiency Rating		
	Current	Potential
<i>Very energy efficient - lower running costs</i>		
(92+) A		88
(81-91) B		
(69-80) C	74	
(55-68) D		
(39-54) E		
(21-38) F		
(1-20) G		
<i>Not energy efficient - higher running costs</i>		
England, Scotland & Wales		EU Directive 2002/91/EC

Environmental Impact (CO ₂) Rating		
	Current	Potential
<i>Very environmentally friendly - lower CO₂ emissions</i>		
(92+) A		87
(81-91) B		
(69-80) C	73	
(55-68) D		
(39-54) E		
(21-38) F		
(1-20) G		
<i>Not environmentally friendly - higher CO₂ emissions</i>		
England, Scotland & Wales		EU Directive 2002/91/EC



20-22 Bridge End, Leeds, LS1 4DJ
t: 0330 004 0050 e: hello@bettermove.co.uk
www.bettermove.co.uk