



**Crossfell Walk  
Fareham  
Hampshire  
PO14**

**Offers in Excess of £270,000**

**bettermove**

# Crossfell Walk

## Fareham

Bettermove are proud to present this 3 bedroom terraced house in Fareham, available with no forward chain.

The property benefits from double glazing, and gas central heating throughout, with off street parking to the rear.

The council tax band is B.

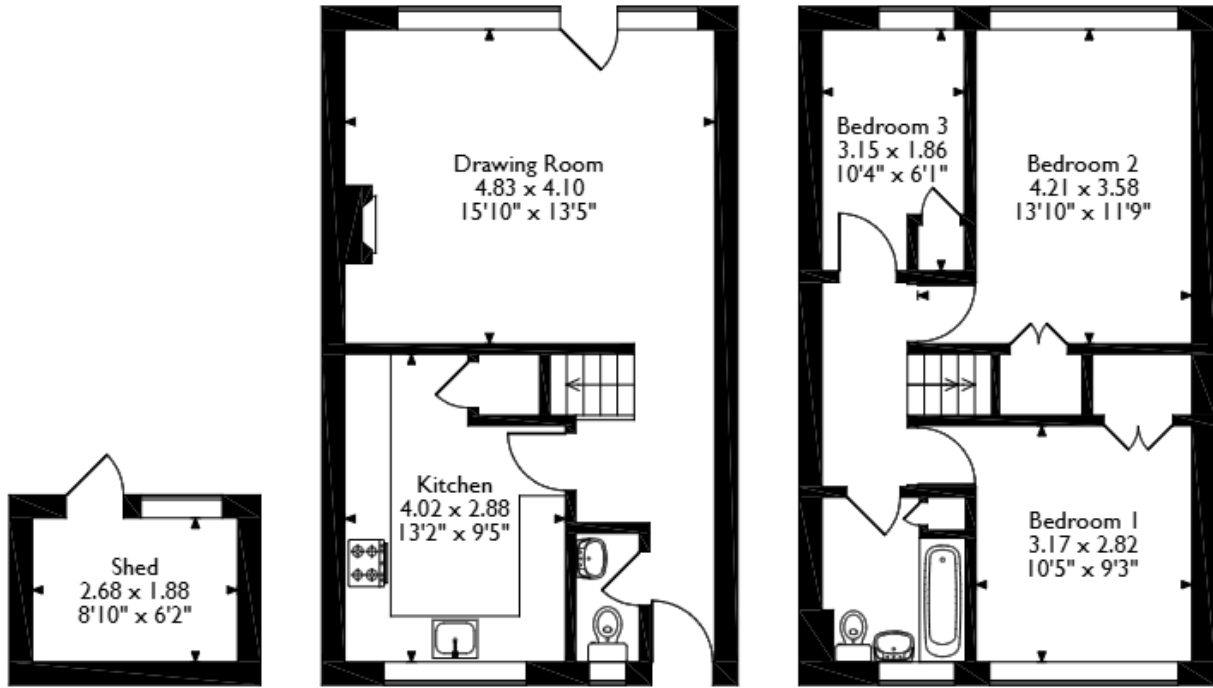
The interior of this beautifully presented property comprises a spacious living room, fitted kitchen, and WC on the ground floor. The first floor consists of three bedrooms, including two doubles, and a single, alongside the family bathroom. The exterior boasts a private rear garden, with an outbuilding, and mainly laid to lawn, perfect for enjoying the summer months.

Located in the popular town of Fareham, the property is close to a range of amenities, including shops, supermarkets, restaurants, pubs, and schools. Excellent transport connections can be found from Fareham train station, a variety of local bus routes, and quick access to the M27.

This exciting opportunity should not be missed. All enquiries can be made through Bettermove.



Crossfell Walk, Fareham, Hampshire  
 Approximate Gross Internal Area  
 Main House = 80 Sq M/862 Sq Ft  
 Outbuilding = 5 Sq M/54 Sq Ft  
 Total = 85 Sq M/916 Sq Ft



**Outbuilding**

**Ground Floor**

**First Floor**

Please note that the location of doors, windows and other items are approximate and this floorplan is to be used for illustrative purposes only. Unauthorized reproduction is prohibited.

Energy Efficiency Rating		
	Current	Potential
<i>Very energy efficient - lower running costs</i>		
(92+) <b>A</b>		
(81-91) <b>B</b>		
(69-80) <b>C</b>		
(55-68) <b>D</b>		
(39-54) <b>E</b>		
(21-38) <b>F</b>		
(1-20) <b>G</b>		
<i>Not energy efficient - higher running costs</i>		
	69	78
<b>England, Scotland &amp; Wales</b>	EU Directive 2002/91/EC	

Environmental Impact (CO <sub>2</sub> ) Rating		
	Current	Potential
<i>Very environmentally friendly - lower CO<sub>2</sub> emissions</i>		
(92+) <b>A</b>		
(81-91) <b>B</b>		
(69-80) <b>C</b>		
(55-68) <b>D</b>		
(39-54) <b>E</b>		
(21-38) <b>F</b>		
(1-20) <b>G</b>		
<i>Not environmentally friendly - higher CO<sub>2</sub> emissions</i>		
	69	76
<b>England, Scotland &amp; Wales</b>	EU Directive 2002/91/EC	



20-22 Bridge End, Leeds, LS1 4DJ  
t: 0330 004 0050 e: hello@bettermove.co.uk  
[www.bettermove.co.uk](http://www.bettermove.co.uk)