



**Hartford House
Blount Road
Portsmouth
Hampshire
PO1**

Offers In Excess Of £229,000

bettermove

Blount Road Portsmouth

Bettermove are proud to present this 2 bedroom flat in Portsmouth, available with no forward chain.

The property benefits from double glazing, and gas central heating throughout, with one allocated parking space available.

The council tax band is D.

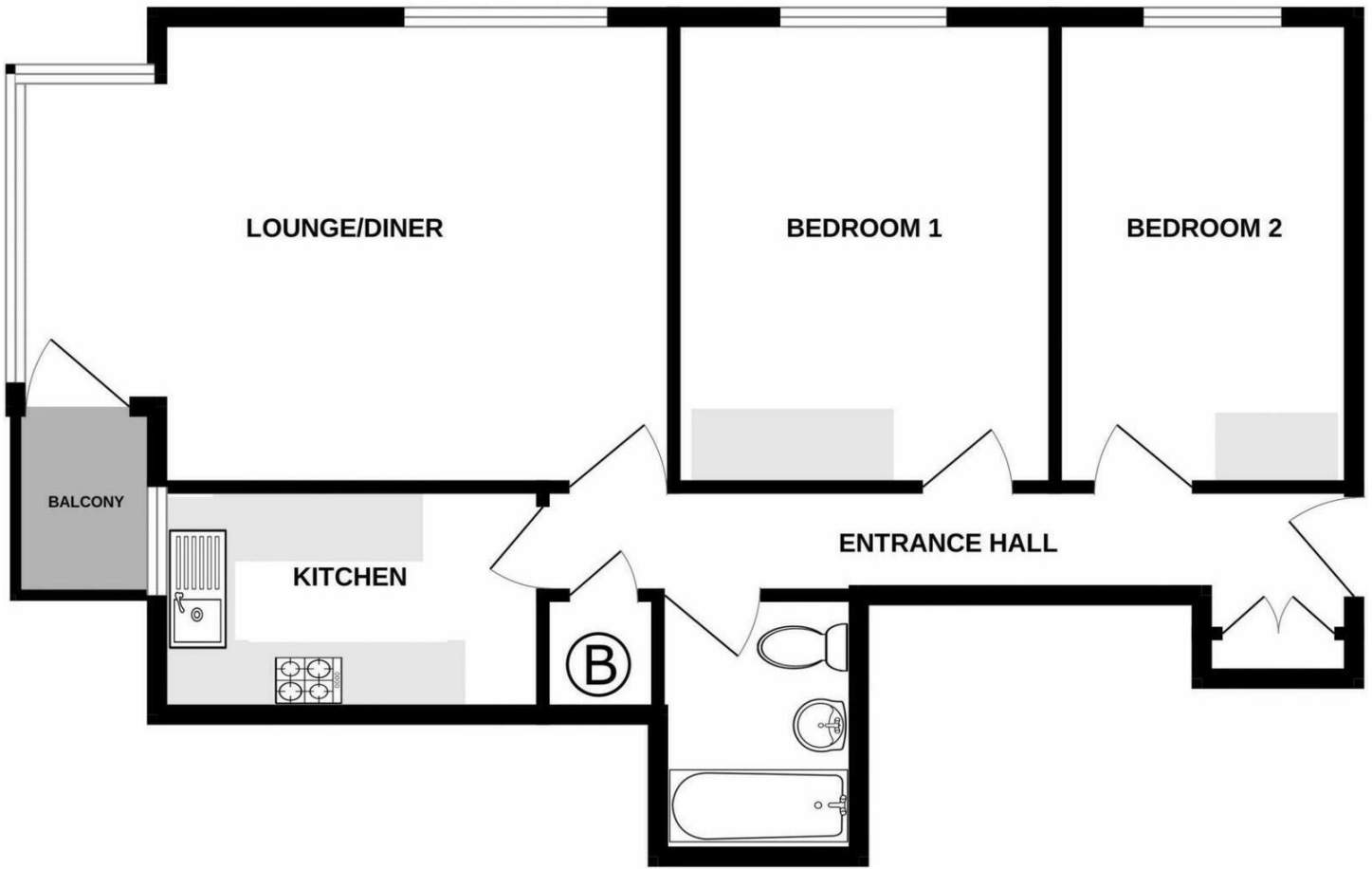
This is a leasehold property with 988 years remaining on the lease; the service charge, including water, is £2,480.00 per annum.

The interior of this well presented, second floor, property, which may require some modernisation, comprises a spacious living/dining room, fitted kitchen, two double bedrooms, and a family bathroom. The property further benefits from lift access to all floors, secure entry system, and communal gardens, perfect for enjoying the summer months.

Located in the popular coastal city of Portsmouth, ideally situated close to Gunwharf Quays, the I of W hovercraft, the new Millennium Promenade, Southsea bars & restaurants, and a short distance to the seafront. Excellent transport connections can be found from Portsmouth & Southsea train station, a variety of local bus routes, and quick access to the M27.

This exciting opportunity should not be missed. All enquiries can be made through Bettermove.





Energy Efficiency Rating		
	Current	Potential
<i>Very energy efficient - lower running costs</i>		
(92+) A		
(81-91) B		
(69-80) C	77	81
(55-68) D		
(39-54) E		
(21-38) F		
(1-20) G		
<i>Not energy efficient - higher running costs</i>		
England, Scotland & Wales	EU Directive 2002/91/EC	

Environmental Impact (CO ₂) Rating		
	Current	Potential
<i>Very environmentally friendly - lower CO₂ emissions</i>		
(92+) A		
(81-91) B		
(69-80) C	77	82
(55-68) D		
(39-54) E		
(21-38) F		
(1-20) G		
<i>Not environmentally friendly - higher CO₂ emissions</i>		
England, Scotland & Wales	EU Directive 2002/91/EC	



20-22 Bridge End, Leeds, LS1 4DJ
t: 0330 004 0050 e: hello@bettermove.co.uk
www.bettermove.co.uk