



Login
Whitland
Carmarthenshire
SA34

Offers In Excess Of £600,000

bettermove

Whitland

Bettermove are proud to present this 5 bedroom detached house in Login.

The property benefits from double glazing, and oil central heating throughout, with off street parking available via the driveway.

The council tax band is G.

The interior of this beautifully presented property comprises a spacious living room, dining room, two reception rooms, sunroom, conservatory, utility room, study, downstairs WC and fitted kitchen on the ground floor. The first floor consists of 5 bedrooms and the family bathroom. The exterior boasts a private rear garden, perfect for enjoying the summer months.

Located in the popular Hamlet of Login, the property is close to a range of amenities, including shops, supermarkets, restaurants and pubs. Excellent transport connections can be found from Clunderwen train station (6.4 miles), variety of bus routes and the A40.

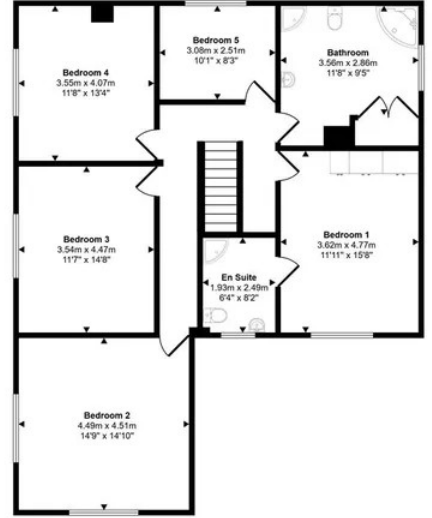
This exciting opportunity should not be missed. All enquiries can be made through Bettermove.



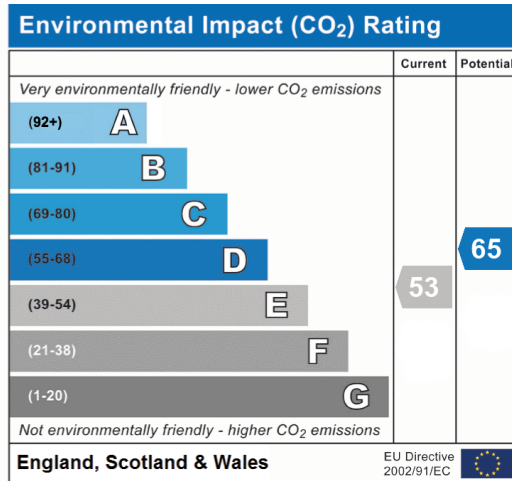
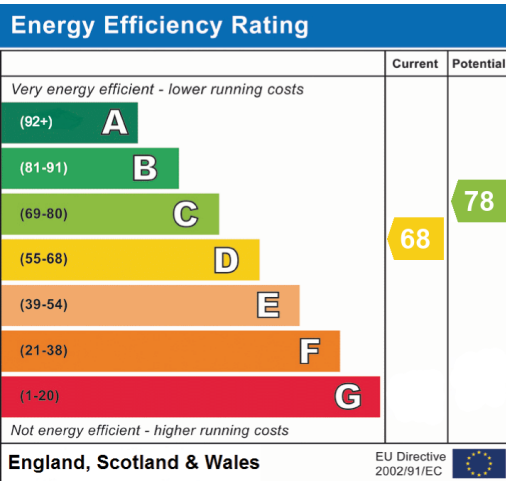
Approx Gross Internal Area
300 sq m / 3228 sq ft



Ground Floor
Approx 188 sq m / 2028 sq ft



First Floor
Approx 112 sq m / 1200 sq ft





20-22 Bridge End, Leeds, LS1 4DJ
t: 0330 004 0050 e: hello@bettermove.co.uk
www.bettermove.co.uk