



Armory Lane  
Portsmouth  
Hampshire  
PO1

Offers in Excess of £455,000

bettermove

# Armory Lane Portsmouth

Bettermove are proud to present this 3 bedroom end of terraced house in Portsmouth.

The property benefits from double glazing, and gas central heating throughout, with off street parking available via the driveway, and a single garage.

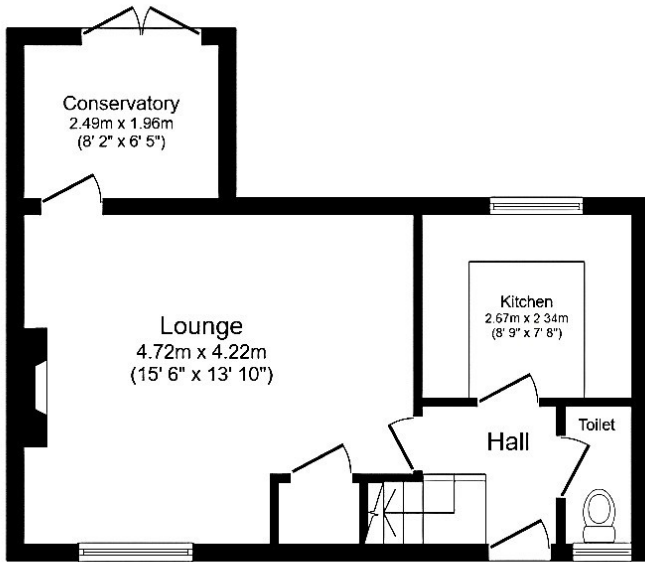
The council tax band is D.

The interior of this beautifully presented home features a living room and a fitted kitchen, complemented by a conservatory with underfloor heating, and WC on the ground floor.. The first floor consists of three bedrooms, including two doubles, and one single, alongside the family bathroom. The exterior boasts a private rear garden, with lawn, patio and decking areas, perfect for enjoying the summer months.

Located in the popular city of Portsmouth, the property is close to Gunwharf Quays and a range of amenities, including shops, supermarkets, restaurants, pubs, and schools. Excellent transport connections can be found from Portsmouth Harbour Train Station, a variety of local bus routes, and quick access to the M27.

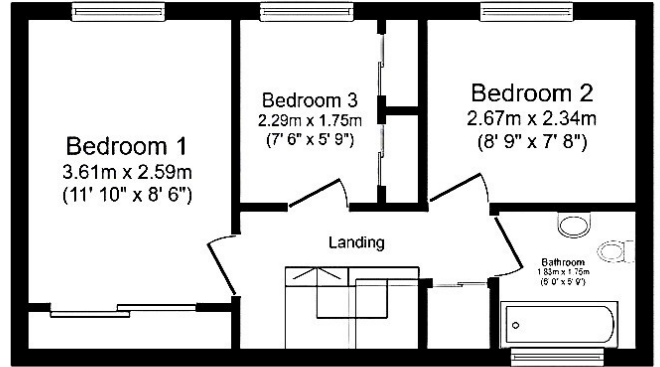
This exciting opportunity should not be missed. All enquiries can be made through Bettermove.





### Ground Floor

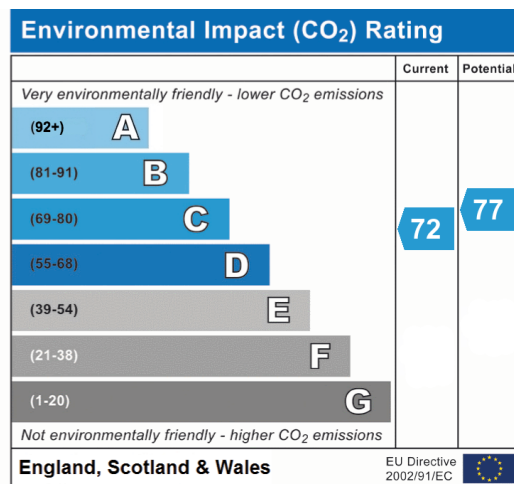
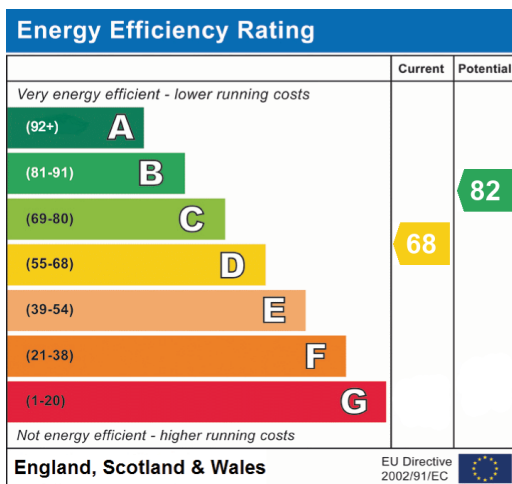
Floor area 37.4 sq.m. (400.8 sq.ft.)



### First Floor

Floor area 32.6 sq.m. (350.4 sq.ft.)

Total floor area: 70.0 sq.m. (753.4sq.ft.)





20-22 Bridge End, Leeds, LS1 4DJ  
t: 0330 004 0050 e: hello@bettermove.co.uk  
[www.bettermove.co.uk](http://www.bettermove.co.uk)