



**Clyde Street
Gateshead
Tyne and Wear
NE8**

Offers In Excess Of £85,000

bettermove

Clyde Street Gateshead

Bettermove are proud to present this 2 bedroom flat in Gateshead, available with no forward chain.

The property benefits from double glazing, and gas central heating throughout, with on street parking available.

The council tax band is A.

This is a leasehold property with 993 years remaining on the lease.

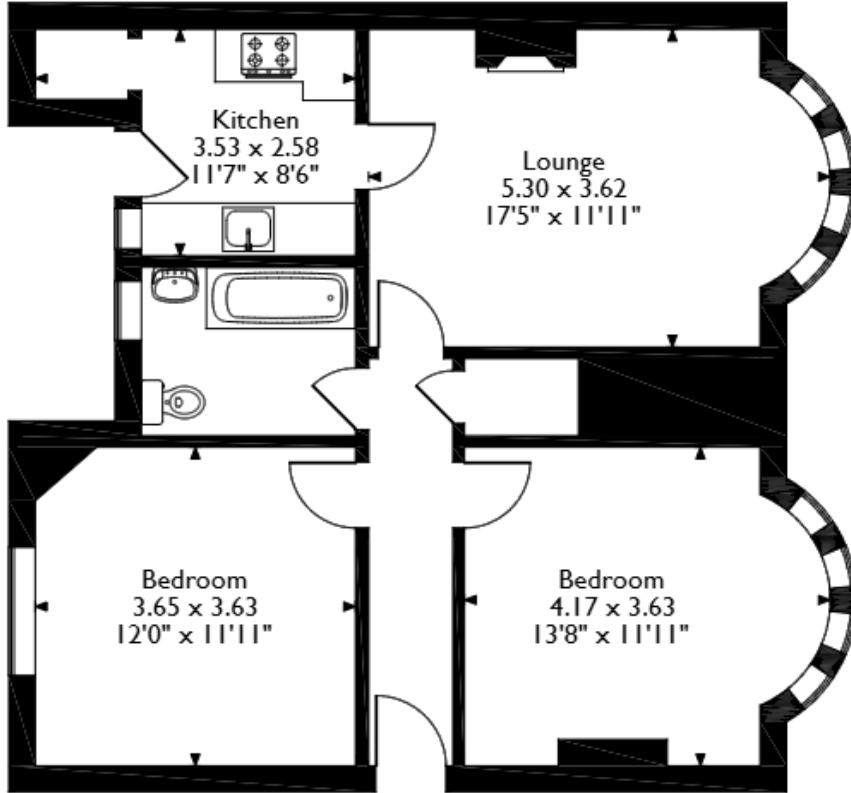
The interior of this well presented, ground floor property comprises a spacious living room, fitted kitchen, two double bedrooms, and the family bathroom. The exterior boasts access to a rear yard, perfect for enjoying the summer months.

Located in the popular town of Gateshead, the property is close to a range of amenities, including shops, supermarkets, restaurants, and pubs. Excellent transport links can be found from Gateshead Stadium Underground station, Heworth train station, and a variety of local bus routes, with quick access to the A1(M).

This exciting opportunity should not be missed! All enquiries can be made through Bettermove.



Clyde Street, Gateshead
 Approximate Gross Internal Area
 67 Sq M/721 Sq Ft



Ground Floor Flat

Please note that the location of doors, windows and other items are approximate and this floorplan is to be used for illustrative purposes only. Unauthorized reproduction is prohibited.

Energy Efficiency Rating		
	Current	Potential
<i>Very energy efficient - lower running costs</i>		
(92+) A		
(81-91) B		
(69-80) C		
(55-68) D	67	72
(39-54) E		
(21-38) F		
(1-20) G		
<i>Not energy efficient - higher running costs</i>		
England, Scotland & Wales		
		EU Directive 2002/91/EC

Environmental Impact (CO ₂) Rating		
	Current	Potential
<i>Very environmentally friendly - lower CO₂ emissions</i>		
(92+) A		
(81-91) B		
(69-80) C		
(55-68) D	65	71
(39-54) E		
(21-38) F		
(1-20) G		
<i>Not environmentally friendly - higher CO₂ emissions</i>		
England, Scotland & Wales		
		EU Directive 2002/91/EC



20-22 Bridge End, Leeds, LS1 4DJ
t: 0330 004 0050 e: hello@bettermove.co.uk
www.bettermove.co.uk