



**Westfield Road
Southsea
Hampshire
PO4**

Offers In Excess Of £210,000

bettermove

Westfield Road Southsea

Bettermove are proud to present this 3 bedroom terraced house in Southsea.

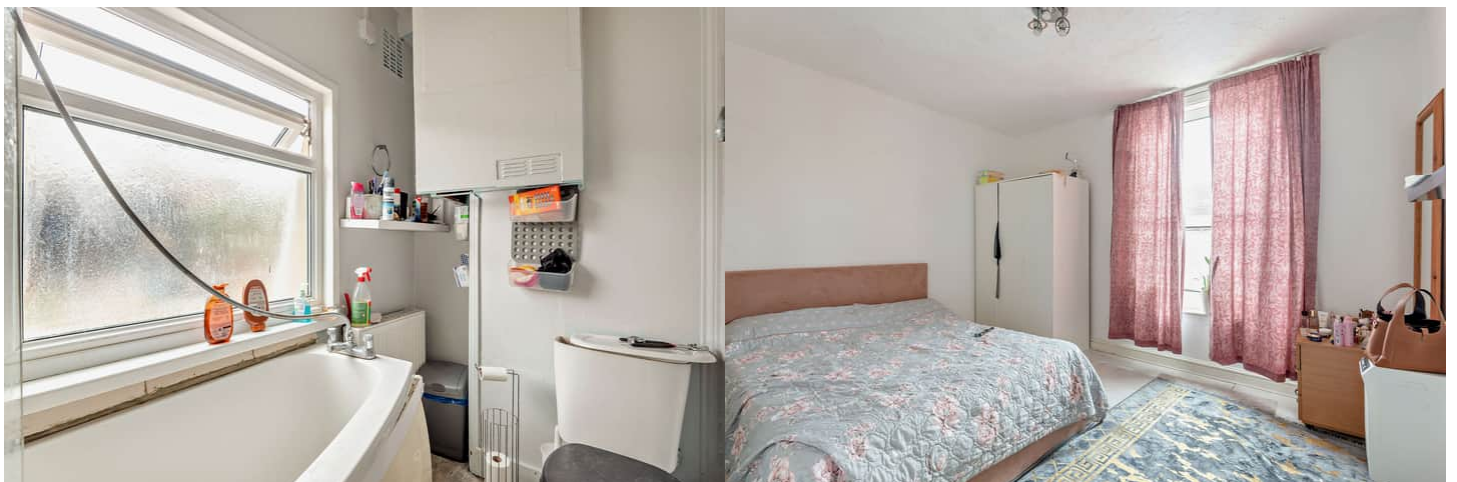
This property benefits from double glazing, and gas central heating throughout, with on street parking available.

The council tax band is B.

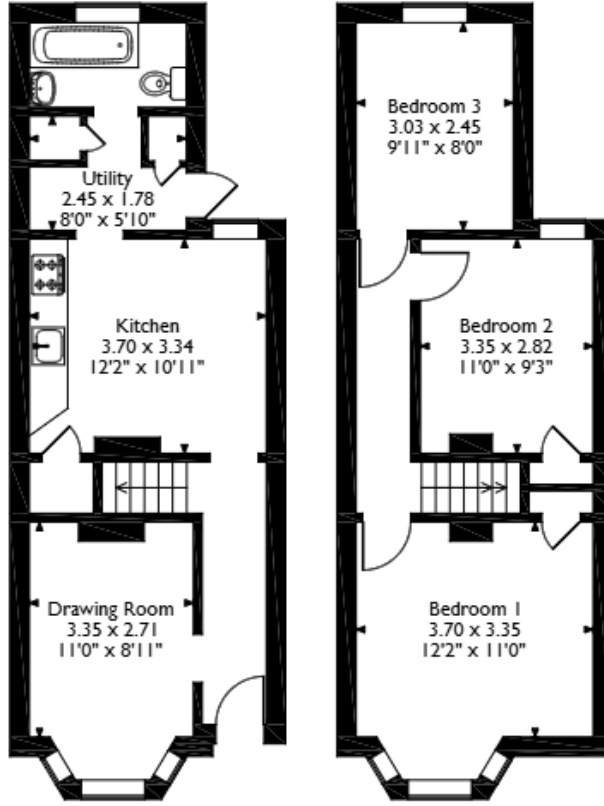
The interior of this well presented property comprises a spacious living room, fitted kitchen, with attached utility room, and family bathroom on the ground floor. The first floor consists of three double bedrooms. Outside, the property boasts a private rear garden, perfect for enjoying the summer months.

Located in the popular coastal area of Southsea, the property is close to a range of amenities, including shops, supermarkets, restaurants, pubs, schools, and a short distance to the seafront. Excellent transport links can be found from Fratton train station, a variety of local bus routes, and quick access to the M27, and A3(M).

This exciting opportunity should not be missed! All enquiries can be made through Bettermove.



Westfield Road, Southsea
 Approximate Gross Internal Area
 76 Sq M/818 Sq Ft



Ground Floor

First Floor

Please note that the location of doors, windows and other items are approximate and this floorplan is to be used for illustrative purposes only. Unauthorised reproduction is prohibited.

Energy Efficiency Rating		
	Current	Potential
<i>Very energy efficient - lower running costs</i>		
(92+) A		89
(81-91) B		
(69-80) C		
(55-68) D	70	
(39-54) E		
(21-38) F		
(1-20) G		
<i>Not energy efficient - higher running costs</i>		
England, Scotland & Wales		
		EU Directive 2002/91/EC

Environmental Impact (CO ₂) Rating		
	Current	Potential
<i>Very environmentally friendly - lower CO₂ emissions</i>		
(92+) A		89
(81-91) B		
(69-80) C		
(55-68) D	68	
(39-54) E		
(21-38) F		
(1-20) G		
<i>Not environmentally friendly - higher CO₂ emissions</i>		
England, Scotland & Wales		
		EU Directive 2002/91/EC



20-22 Bridge End, Leeds, LS1 4DJ
t: 0330 004 0050 e: hello@bettermove.co.uk
www.bettermove.co.uk