



Spring Close
Shepshed
Loughborough
Leicestershire
LE12

Offers in Excess of £262,000

bettermove 

Spring Close Loughborough

Bettermove are proud to present this 3 bedroom detached bungalow in Shepshed, available with no forward chain.

The property benefits from double glazing, gas central heating, and new internal doors and flooring throughout, with off street parking available via the driveway.

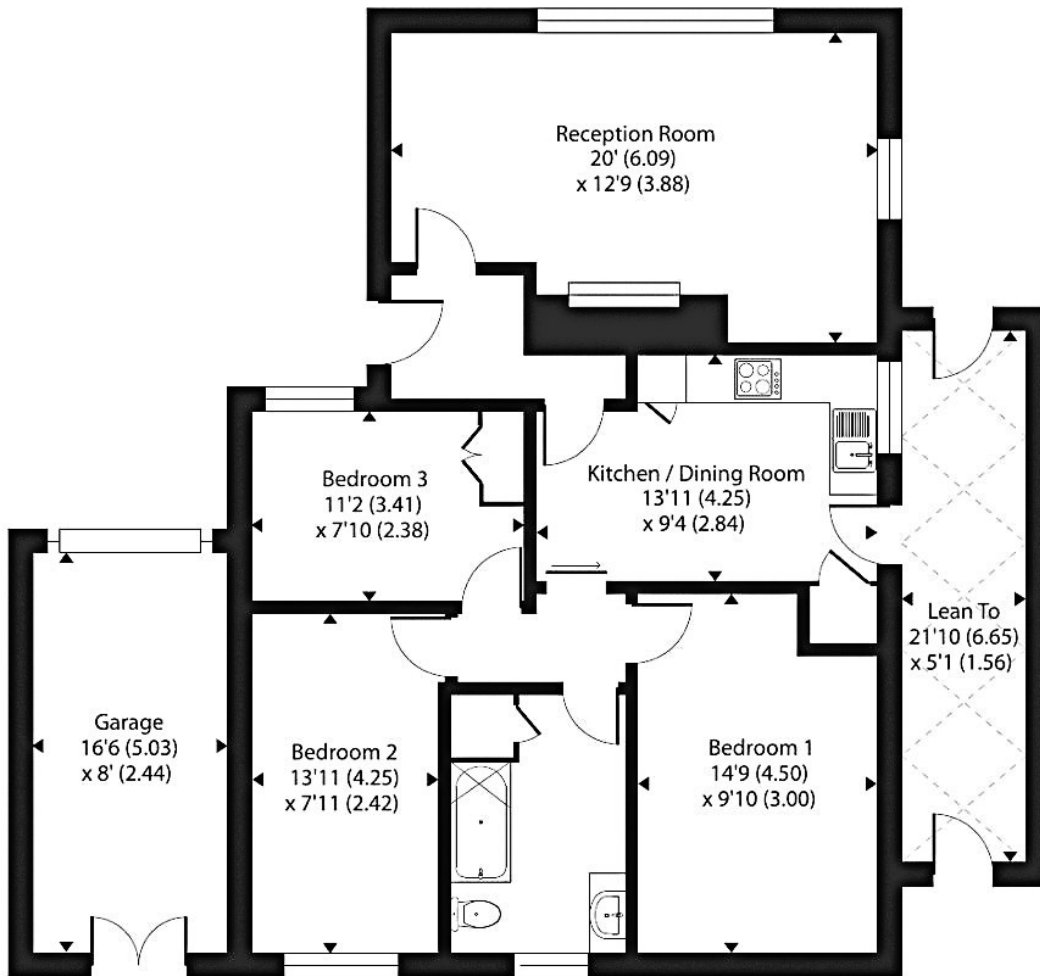
The council tax band is C.

The interior of this beautifully presented property comprises a spacious living room, complete with a log burner, fitted kitchen/diner, three double bedrooms, and a family bathroom, the property further benefits from a fully boarded loft with conversion potential (STPP). The exterior boasts a single garage, and a private rear garden, mainly laid to lawn, perfect for enjoying the summer months.


Located in the popular town of Shepshed, Loughborough, the property is close to a range of amenities, including shops, supermarkets, restaurants, pubs, and schools. Excellent transport connections can be found from Loughborough train station, a variety of local bus routes, and quick access to the M1.


This exciting opportunity should not be missed. All enquiries can be made through Bettermove.





Ground floor

Energy Efficiency Rating		
	Current	Potential
<i>Very energy efficient - lower running costs</i>		
(92+) A		
(81-91) B		
(69-80) C		
(55-68) D		
(39-54) E		
(21-38) F		
(1-20) G		
<i>Not energy efficient - higher running costs</i>		
	69	76
England, Scotland & Wales <small>EU Directive 2002/91/EC</small> 		

Environmental Impact (CO ₂) Rating		
	Current	Potential
<i>Very environmentally friendly - lower CO₂ emissions</i>		
(92+) A		
(81-91) B		
(69-80) C		
(55-68) D		
(39-54) E		
(21-38) F		
(1-20) G		
<i>Not environmentally friendly - higher CO₂ emissions</i>		
	71	76
England, Scotland & Wales <small>EU Directive 2002/91/EC</small> 		



20-22 Bridge End, Leeds, LS1 4DJ
t: 0330 004 0050 e: hello@bettermove.co.uk
www.bettermove.co.uk