



Dixon Street
Swindon
Wiltshire
SN1

Offers in Excess of £195,000

bettermove

Dixon Street Swindon

Bettermove are proud to present this 2 bedroom terraced house in Swindon, available with no forward chain.

This is currently a tenanted property, and it will be sold with tenants in situ for immediate investment. Rental yields can be obtained through Bettermove.

The property benefits from double glazing, and gas central heating throughout, with on street parking available.

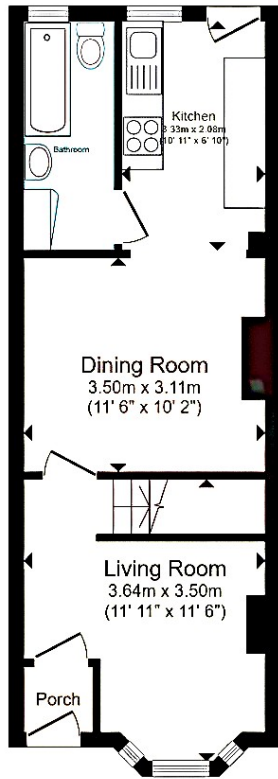
The council tax band is A.

The interior of this beautifully presented property comprises a spacious living room, dining room, fitted kitchen, and family bathroom on the ground floor. The first floor consists of the two double bedrooms. Outside, the property boasts a private rear garden, perfect for enjoying the summer months.

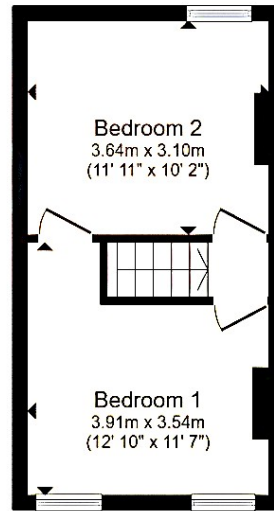
Located in the popular town of Swindon, the property is close to a range of amenities, including shops, supermarkets, restaurants, pubs, and schools. Excellent transport links can be found from Swindon train station, a variety of local bus routes, and quick access to the M4.

This exciting opportunity should not be missed! All enquiries can be made through Bettermove.





Ground Floor



First Floor

Total floor area 60.7 m² (654 sq.ft.) approx

| Energy Efficiency Rating | | |
|--|-------------------------|-----------|
| | Current | Potential |
| <i>Very energy efficient - lower running costs</i> | | |
| (92+) A | | |
| (81-91) B | | 86 |
| (69-80) C | | |
| (55-68) D | 65 | |
| (39-54) E | | |
| (21-38) F | | |
| (1-20) G | | |
| <i>Not energy efficient - higher running costs</i> | | |
| England, Scotland & Wales | EU Directive 2002/91/EC | |

| Environmental Impact (CO ₂) Rating | | |
|---|-------------------------|-----------|
| | Current | Potential |
| <i>Very environmentally friendly - lower CO₂ emissions</i> | | |
| (92+) A | | |
| (81-91) B | | 85 |
| (69-80) C | | |
| (55-68) D | 61 | |
| (39-54) E | | |
| (21-38) F | | |
| (1-20) G | | |
| <i>Not environmentally friendly - higher CO₂ emissions</i> | | |
| England, Scotland & Wales | EU Directive 2002/91/EC | |



20-22 Bridge End, Leeds, LS1 4DJ
t: 0330 004 0050 e: hello@bettermove.co.uk
www.bettermove.co.uk