



**Skylark Way  
Easington Lane  
Houghton le Spring  
Tyne and Wear  
DH5**

**Offers In Excess Of £225,000**

**bettermove**

# Skylark Way Houghton le Spring

Bettermove are proud to present this 4 bedroom detached house in Easington Lane, Houghton-le-Spring.

The property benefits from double glazing, and gas central heating throughout, with off street parking available via the driveway and garage.

The council tax band is C.

The interior of this beautifully presented property comprises a spacious living room, dining room, fitted kitchen, study room, and WC on the ground floor. The first floor consists of four bedrooms, with the master bedroom benefitting from a private en-suite, alongside the family bathroom. The exterior boasts a private rear garden, with lawn, decking and patio areas, perfect for enjoying the summer months.

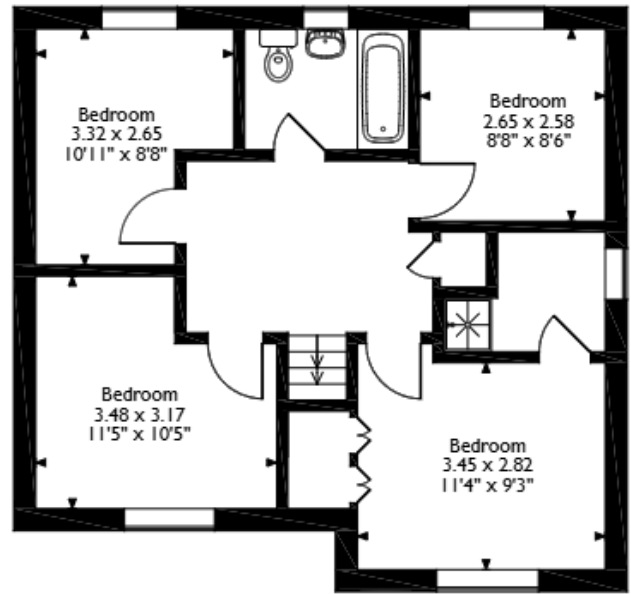
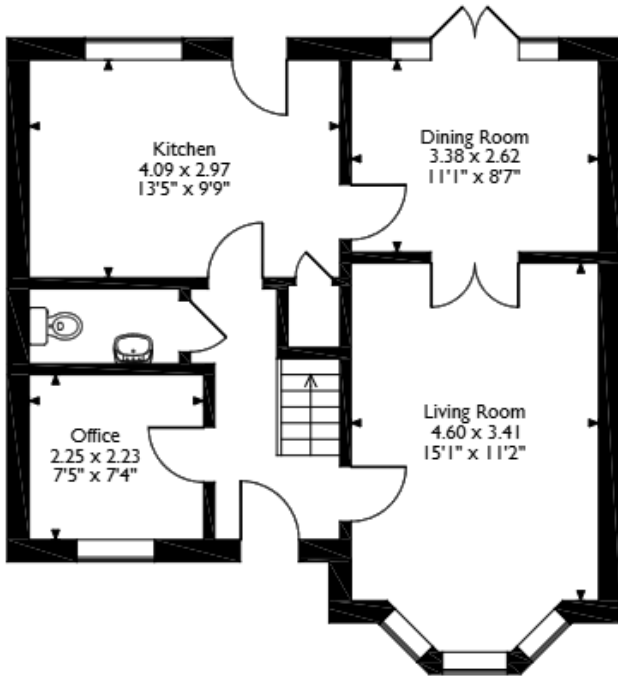
Located in the desirable village of Easington Lane, Houghton le Spring, the property is close to a range of amenities, including shops, supermarkets, restaurants, pubs, and schools. Excellent transport connections can be found from Seaham Train Station, a variety of local bus routes, and quick access to the A1(M).

This exciting opportunity should not be missed. All enquiries can be made through Bettermove.



# Skylark Way, Easington Lane, Houghton Le Spring

## Approximate Gross Internal Area 109 Sq M / 1173 Sq Ft



Please note that the location of doors, windows and other items are approximate and this floorplan is to be used for illustrative purposes only. Unauthorized reproduction is prohibited.

Energy Efficiency Rating		
	Current	Potential
<i>Very energy efficient - lower running costs</i>		
(92+) <b>A</b>		<b>90</b>
(81-91) <b>B</b>		
(69-80) <b>C</b>	<b>78</b>	
(55-68) <b>D</b>		
(39-54) <b>E</b>		
(21-38) <b>F</b>		
(1-20) <b>G</b>		
<i>Not energy efficient - higher running costs</i>		
<b>England, Scotland &amp; Wales</b>		EU Directive 2002/91/EC

Environmental Impact (CO <sub>2</sub> ) Rating		
	Current	Potential
<i>Very environmentally friendly - lower CO<sub>2</sub> emissions</i>		
(92+) <b>A</b>		<b>89</b>
(81-91) <b>B</b>		
(69-80) <b>C</b>	<b>78</b>	
(55-68) <b>D</b>		
(39-54) <b>E</b>		
(21-38) <b>F</b>		
(1-20) <b>G</b>		
<i>Not environmentally friendly - higher CO<sub>2</sub> emissions</i>		
<b>England, Scotland &amp; Wales</b>		EU Directive 2002/91/EC



20-22 Bridge End, Leeds, LS1 4DJ  
t: 0330 004 0050 e: hello@bettermove.co.uk  
[www.bettermove.co.uk](http://www.bettermove.co.uk)