



**Clewer Fields  
Windsor  
Berkshire  
SL4**

**Offers in Excess of £385,000**

**bettermove**

# Clewer Fields Windsor

Bettermove are proud to present this 2 bedroom terraced house in Windsor.

The property benefits from double glazing, and gas central heating throughout, with on street, permit parking available.

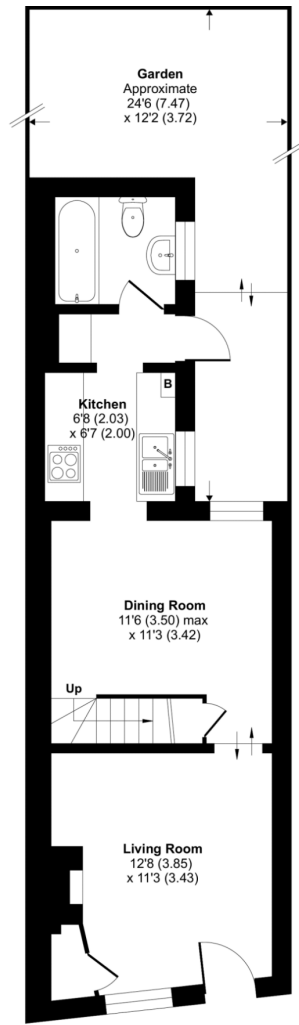
The council tax band is D.

The interior of this beautifully presented property comprises a spacious living room, dining room, fitted kitchen, and family bathroom on the ground floor. The first floor consists of two double bedrooms. The exterior boasts a private rear, well-maintained courtyard, perfect for enjoying the summer months.

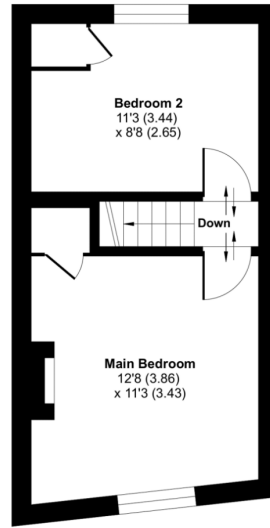
Located in the popular town of Windsor, the property is close to a range of amenities, including shops, supermarkets, restaurants, pubs, and schools. Excellent transport connections can be found from Windsor & Eton Central train station, a variety of local bus routes, and quick access to the M4.

This exciting opportunity should not be missed. All enquiries can be made through Bettermove.





GROUND FLOOR



FIRST FLOOR

Energy Efficiency Rating		Current	Potential
<i>Very energy efficient - lower running costs</i>			
(92+)	<b>A</b>		
(81-91)	<b>B</b>		<b>87</b>
(69-80)	<b>C</b>		
(55-68)	<b>D</b>	<b>64</b>	
(39-54)	<b>E</b>		
(21-38)	<b>F</b>		
(1-20)	<b>G</b>		
<i>Not energy efficient - higher running costs</i>			
<b>England, Scotland &amp; Wales</b>		EU Directive 2002/91/EC	



20-22 Bridge End, Leeds, LS1 4DJ  
t: 0330 004 0050 e: hello@bettermove.co.uk  
[www.bettermove.co.uk](http://www.bettermove.co.uk)