



**River View
Northampton
NN4**

Offers In Excess Of £105,000

bettermove

River View Northampton

Bettermove are proud to present this 2 bedroom flat in Northampton, available with no forward chain.

The property benefits from double glazing, and gas central heating throughout, with allocated parking available.

The council tax band is C.

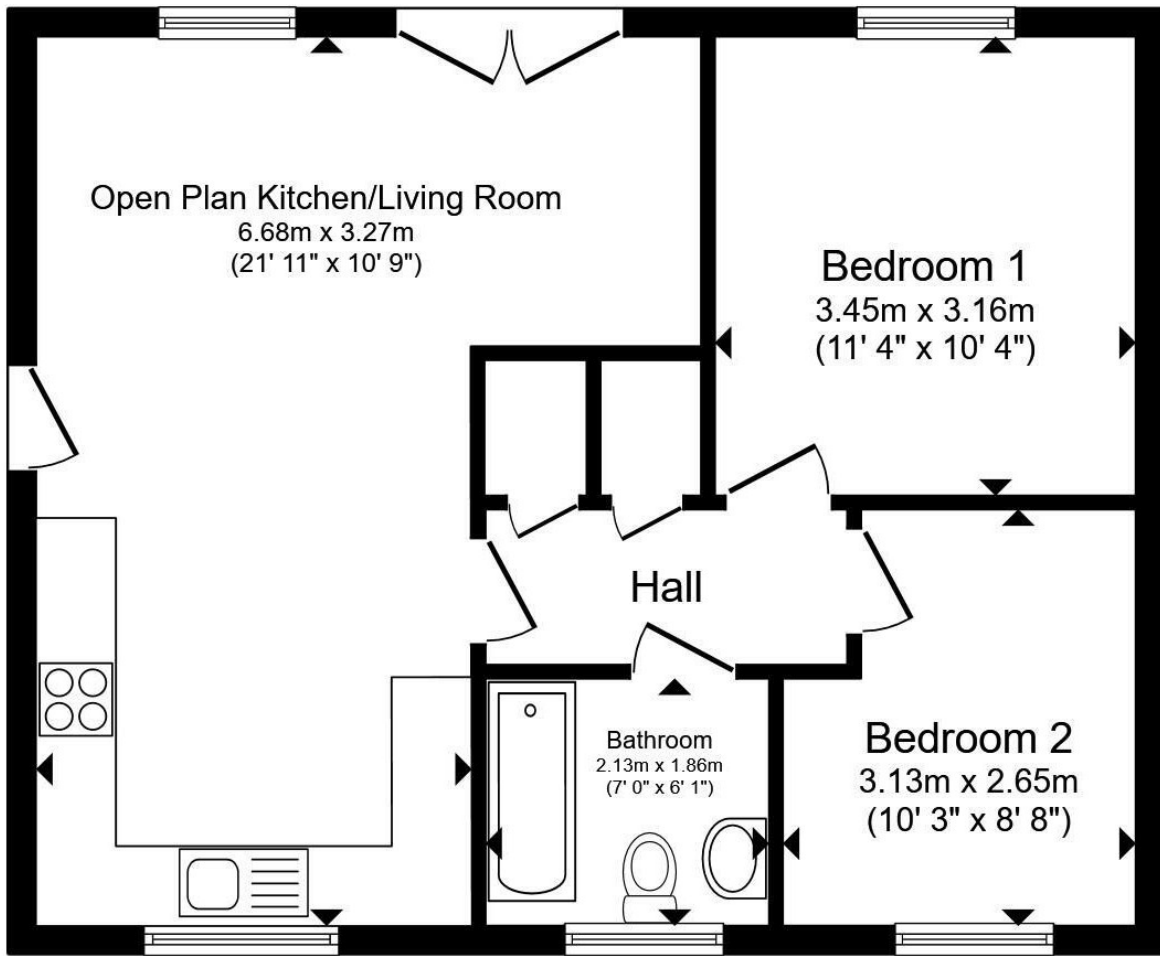
This is a leasehold property with 129 years remaining on the lease; the ground rent is £250.00 per annum, and the service charge is £2,600.00 per annum.

The interior of this beautifully presented, ground floor property comprises a spacious, open-plan living/kitchen area, two double bedrooms, and a family bathroom. The exterior boasts communal gardens, perfect for enjoying the summer months.


Located in the popular town of Northampton, the property is close to a range of amenities, including shops, supermarkets, restaurants and pubs. Excellent transport connections can be found from Northampton train station, a variety of local bus routes, and quick access to the M1.


This exciting opportunity should not be missed. All enquiries can be made through Bettermove.





Ground Floor

Energy Efficiency Rating		
	Current	Potential
<i>Very energy efficient - lower running costs</i>		
(92+) A		
(81-91) B		
(69-80) C	79	79
(55-68) D		
(39-54) E		
(21-38) F		
(1-20) G		
<i>Not energy efficient - higher running costs</i>		
England, Scotland & Wales	EU Directive 2002/91/EC 	

Environmental Impact (CO ₂) Rating		
	Current	Potential
<i>Very environmentally friendly - lower CO₂ emissions</i>		
(92+) A		
(81-91) B		
(69-80) C	82	82
(55-68) D		
(39-54) E		
(21-38) F		
(1-20) G		
<i>Not environmentally friendly - higher CO₂ emissions</i>		
England, Scotland & Wales	EU Directive 2002/91/EC 	



20-22 Bridge End, Leeds, LS1 4DJ
t: 0330 004 0050 e: hello@bettermove.co.uk
www.bettermove.co.uk