



Manning Road
Cotford St Luke
Taunton
Somerset
TA4

Offers in Excess of £410,000

bettermove

Manning Road Taunton

Bettermove are proud to present this 4 bedroom link-detached house in Cotford St Luke.

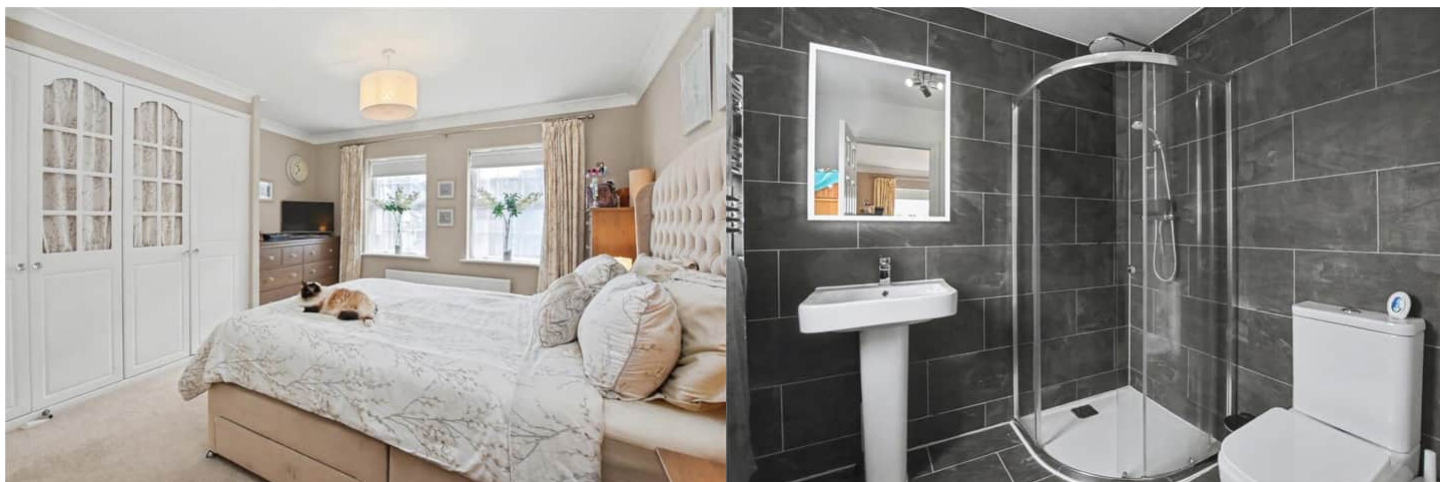
This property benefits from double glazing, and gas central heating, and off road parking available via the driveway, and double garage.

The council tax band is E.

The interior of this beautifully presented property comprises a spacious living room, dining room, study, WC, and fitted kitchen/breakfast room, with attached utility, on the ground floor. The first floor consists of four generously sized bedrooms, with the master bedroom benefitting from a private en-suite, and the family bathroom. The exterior boasts an outbuilding, ideal for an office or summerhouse, alongside a private rear garden, with lawn, patio, and decking areas, perfect for enjoying the summer months.

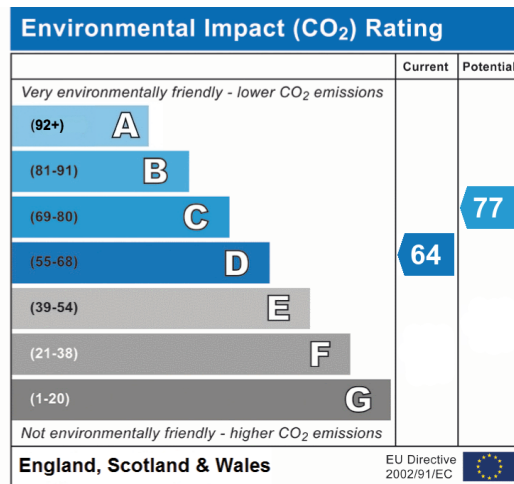
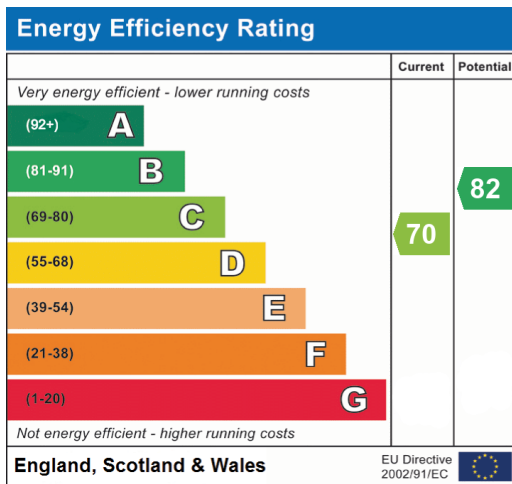
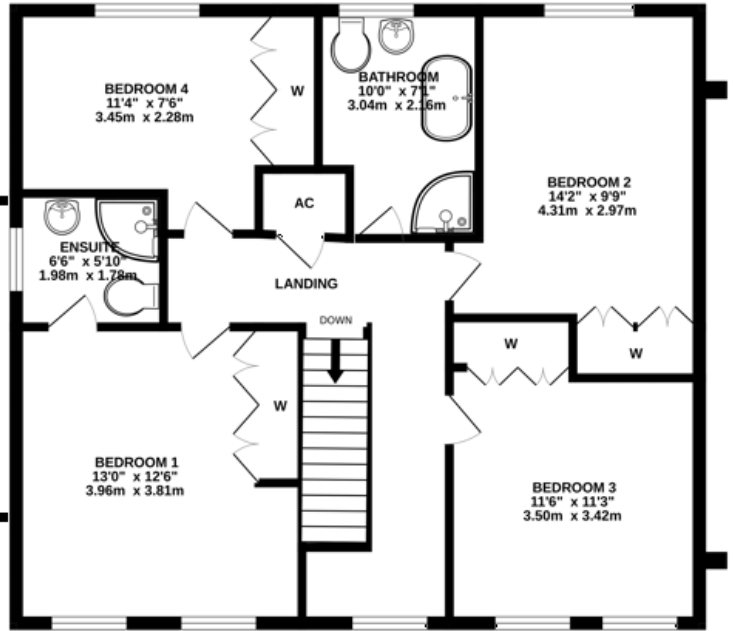
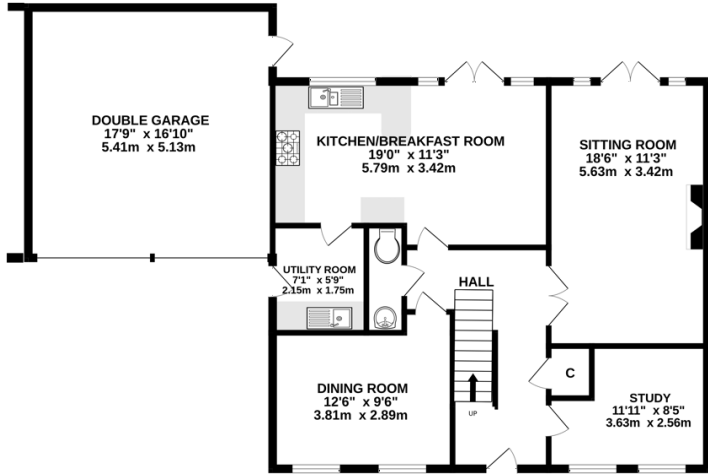
Located in the desirable village of Cotford St Luke, Taunton, the property is close to a range of amenities, including shops, supermarkets, restaurants, pubs, and schools. Excellent transport links can be found from Bishops Lydeard (BIB) train station, a variety of local bus routes, and quick access to the M5.

This exciting opportunity should not be missed! All enquiries can be made through Bettermove.



1ST FLOOR

GROUND FLOOR





20-22 Bridge End, Leeds, LS1 4DJ
t: 0330 004 0050 e: hello@bettermove.co.uk
www.bettermove.co.uk