



Stowting Hill
Stowting
Ashford
Kent
TN25

Offers in Excess of £640,000

bettermove 

Stowting Hill

Ashford

Bettermove are proud to present this 3 bedroom Grade II Listed semi-detached Cottage in Stowting.

The property benefits from a mixture of double, and secondary glazing, and a modern electric heating system throughout, with ample off road parking available via a gravelled parking area to the front of the property.

The council tax band is D..

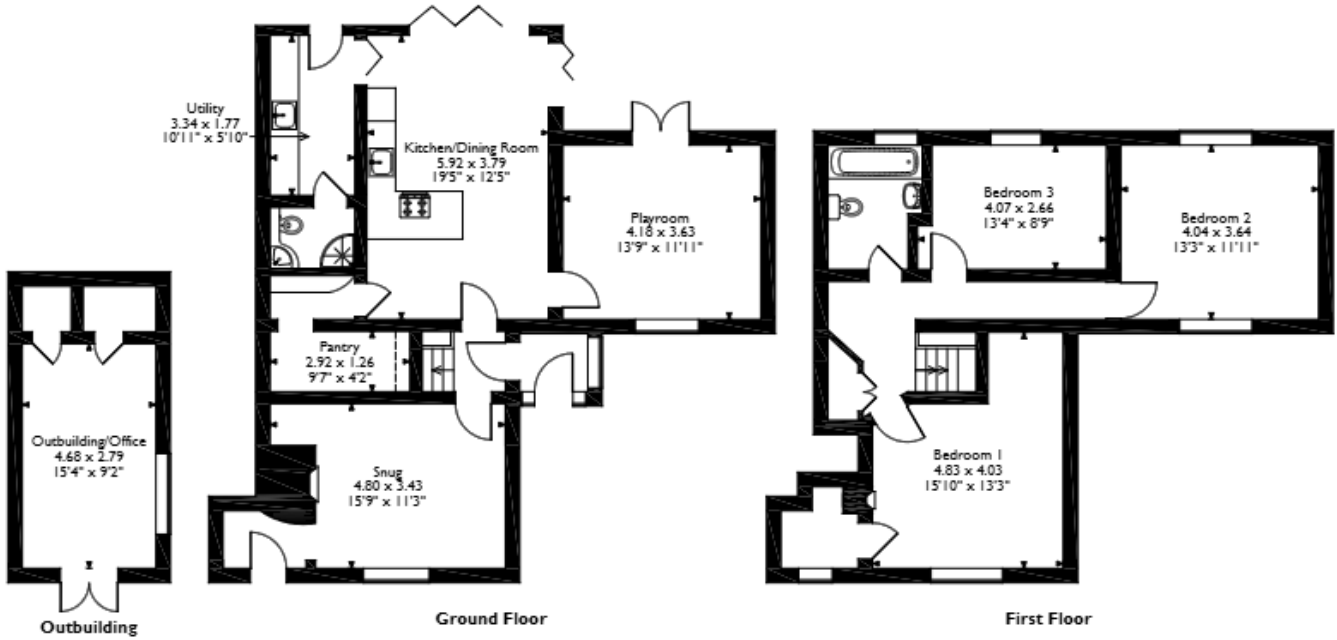
A charming Grade II listed semi-detached cottage, which has been beautifully extended and updated to a high standard, combining modern living with period charm. The ground floor comprises a spacious living room with an impressive fireplace fitted with log burner, family room, and a stunning open-plan kitchen/dining space, featuring two sets of bi-fold doors opening onto the garden, alongside a walk-in store and a utility room with access to a shower room. Upstairs, a split-level landing leads to three generous double bedrooms and a family bathroom. Outside, the property boasts generous front garden, a recently built detached office with a mezzanine gallery provides additional space. To the rear, a large patio and lawn area provide beautiful views over Stowting cricket ground and surrounding countryside, perfect for enjoying the summer months.

Located in the quiet village of Stowting, Ashford, the property is close to a range of amenities, with excellent transport connections from Sandling Train Station, and quick access to the M20.

This exciting opportunity should not be missed. All enquiries can be made through Bettermove.



Rolfe Cottage, Stowting Hill, Stowting, Ashford, Kent
 Approximate Gross Internal Area
 Main House = 143 Sq M/1539 Sq Ft
 Outbuilding = 16 Sq M/172 Sq Ft
 Total = 159 Sq M/1711 Sq Ft



Please note that the location of doors, windows and other items are approximate and this floorplan is to be used for illustrative purposes only. Unauthorized reproduction is prohibited.

Energy Efficiency Rating		
	Current	Potential
<i>Very energy efficient - lower running costs</i>		
(92+) A		
(81-91) B		
(69-80) C		77
(55-68) D		
(39-54) E	42	
(21-38) F		
(1-20) G		
<i>Not energy efficient - higher running costs</i>		
England, Scotland & Wales		
EU Directive 2002/91/EC		

Environmental Impact (CO ₂) Rating		
	Current	Potential
<i>Very environmentally friendly - lower CO₂ emissions</i>		
(92+) A		
(81-91) B		
(69-80) C		70
(55-68) D		
(39-54) E		
(21-38) F	36	
(1-20) G		
<i>Not environmentally friendly - higher CO₂ emissions</i>		
England, Scotland & Wales		
EU Directive 2002/91/EC		



20-22 Bridge End, Leeds, LS1 4DJ
t: 0330 004 0050 e: hello@bettermove.co.uk
www.bettermove.co.uk