



Moulder Road
Tewkesbury
Gloucestershire
GL20

Offers In Excess Of £435,000

bettermove 

Moulder Road Tewkesbury

Bettermove are proud to present this 4 bedroom detached house in Tewkesbury.

The property benefits from double glazing, and gas central heating throughout, with off street parking available via the driveway.

The council tax band is D.

The interior of this beautifully presented property comprises a spacious living room, fitted kitchen/diner, study, WC, and a versatile room, ideal for a second reception room, or fifth bedroom, on the ground floor. The first floor consists of four generously sized bedrooms, with the master bedroom benefitting from a private en-suite, alongside the family bathroom. The exterior boasts a garage with power and lighting, and a private rear garden, with a paved patio area, two decked seating areas with the remainder laid to lawn, perfect for enjoying the summer months.

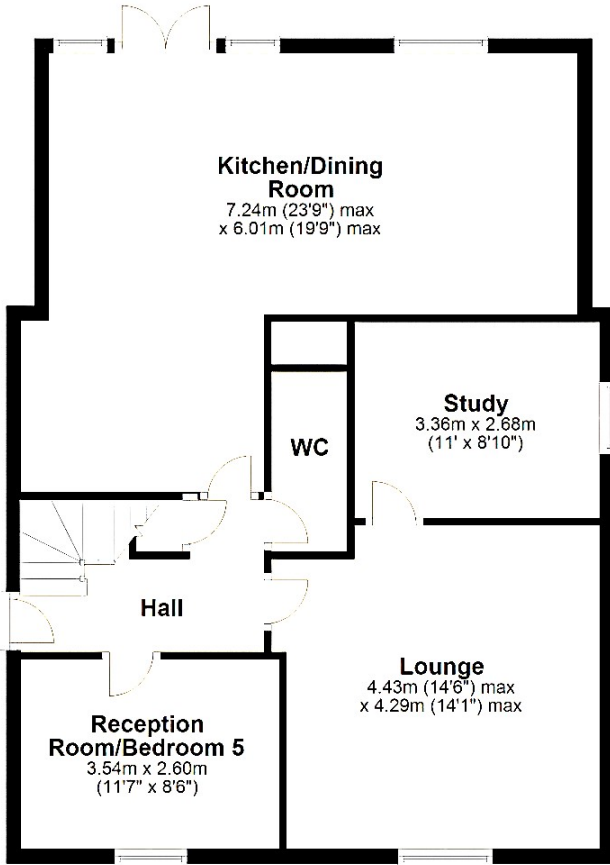
Located in the popular town of Tewkesbury, the property is close to a range of amenities, including shops, supermarkets, restaurants, pubs, and schools. Excellent transport connections can be found from Ashchurch for Tewkesbury Train Station, a variety of local bus routes, and quick access to the M5, and M50.

This exciting opportunity should not be missed. All enquiries can be made through Bettermove.



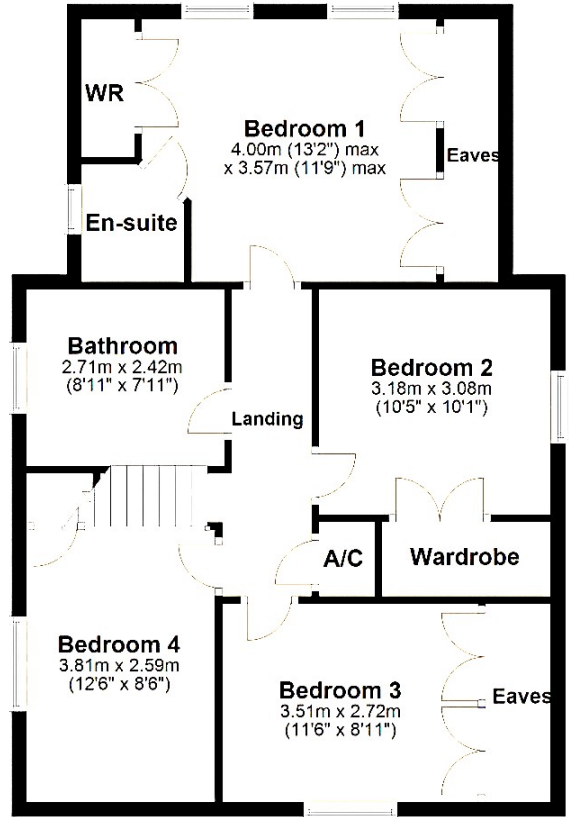
Ground Floor

Approx. 87.3 sq. metres (939.7 sq. feet)



First Floor

Approx. 71.6 sq. metres (770.5 sq. feet)



Total area: approx. 158.9 sq. metres (1710.2 sq. feet)

Energy Efficiency Rating		
	Current	Potential
<i>Very energy efficient - lower running costs</i>		
(92+) A		
(81-91) B		
(69-80) C		
(55-68) D		
(39-54) E		
(21-38) F		
(1-20) G		
<i>Not energy efficient - higher running costs</i>		
	71	76
England, Scotland & Wales		
EU Directive 2002/91/EC		

Environmental Impact (CO ₂) Rating		
	Current	Potential
<i>Very environmentally friendly - lower CO₂ emissions</i>		
(92+) A		
(81-91) B		
(69-80) C		
(55-68) D		
(39-54) E		
(21-38) F		
(1-20) G		
<i>Not environmentally friendly - higher CO₂ emissions</i>		
	72	74
England, Scotland & Wales		
EU Directive 2002/91/EC		



20-22 Bridge End, Leeds, LS1 4DJ
t: 0330 004 0050 e: hello@bettermove.co.uk
www.bettermove.co.uk