



**Windmill Gardens  
Wisbech  
Cambridgeshire  
PE14**

**Offers in Excess of £200,000**

**bettermove**

# Windmill Gardens

## Wisbech

Bettermove are proud to present this 2 bedroom detached bungalow in Wisbech.

The property benefits from double glazing, solar panels, and gas central heating throughout, with off street parking available via the driveway.

The council tax band is B.

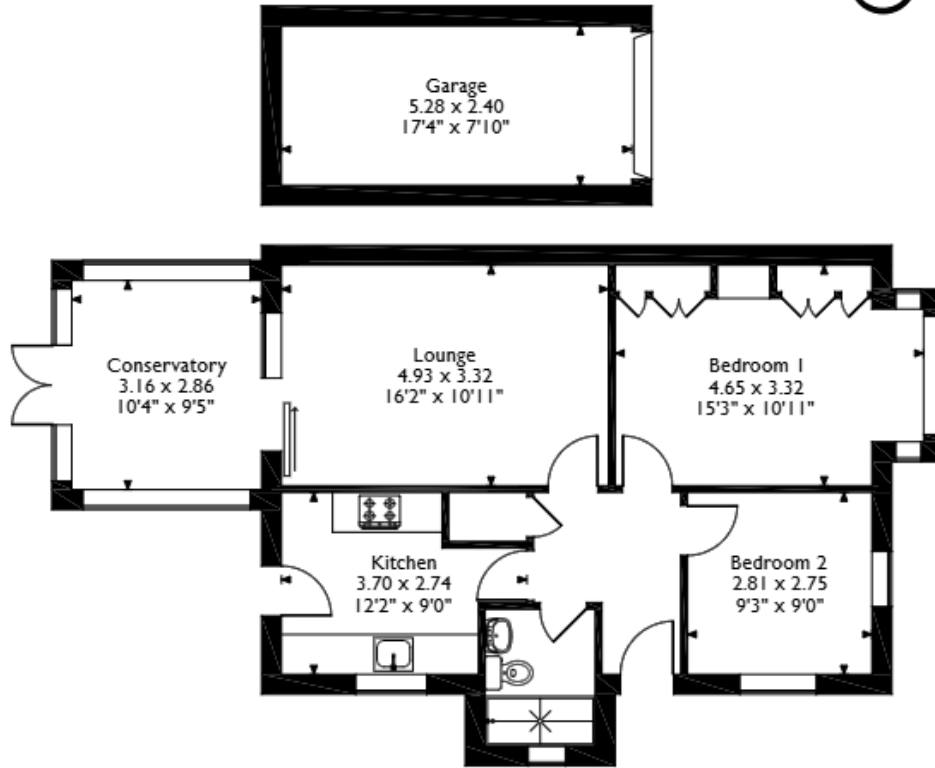
The interior of this well presented property comprises a spacious living room, fitted kitchen, conservatory, two double bedrooms, and a shower room. The exterior boasts a single garage, and wrap-around gardens, perfect for enjoying the summer months.

Located in the popular town of Wisbech, the property is close to a range of amenities, including shops, supermarkets, restaurants and pubs. Excellent transport connections can be found from March Train Station (11.2 miles), a variety of local bus routes, and quick access to the A47.

This exciting opportunity should not be missed. All enquiries can be made through Bettermove.



Windmill Gardens, Wisbech, Cambridgeshire  
 Approximate Gross Internal Area  
 Main House = 68 Sq M/732 Sq Ft  
 Garage = 13 Sq M/140 Sq Ft  
 Total = 81 Sq M/872 Sq Ft



**Ground Floor**

Please note that the location of doors, windows and other items are approximate and this floorplan is to be used for illustrative purposes only. Unauthorized reproduction is prohibited.

Energy Efficiency Rating		
	Current	Potential
<i>Very energy efficient - lower running costs</i>		
(92+) <b>A</b>		<b>91</b>
(81-91) <b>B</b>	<b>82</b>	
(69-80) <b>C</b>		
(55-68) <b>D</b>		
(39-54) <b>E</b>		
(21-38) <b>F</b>		
(1-20) <b>G</b>		
<i>Not energy efficient - higher running costs</i>		
<b>England, Scotland &amp; Wales</b>		
		EU Directive 2002/91/EC

Environmental Impact (CO <sub>2</sub> ) Rating		
	Current	Potential
<i>Very environmentally friendly - lower CO<sub>2</sub> emissions</i>		
(92+) <b>A</b>		<b>92</b>
(81-91) <b>B</b>	<b>82</b>	
(69-80) <b>C</b>		
(55-68) <b>D</b>		
(39-54) <b>E</b>		
(21-38) <b>F</b>		
(1-20) <b>G</b>		
<i>Not environmentally friendly - higher CO<sub>2</sub> emissions</i>		
<b>England, Scotland &amp; Wales</b>		
		EU Directive 2002/91/EC



20-22 Bridge End, Leeds, LS1 4DJ  
t: 0330 004 0050 e: hello@bettermove.co.uk  
[www.bettermove.co.uk](http://www.bettermove.co.uk)