



**Railway Terrace  
Sunderland  
Tyne and Wear  
SR4**

**Offers in Excess of £95,000**

**bettermove**

# Railway Terrace

## Sunderland

Bettermove are proud to present this 3 bedroom flat in Sunderland, available with no forward chain.

The property is currently tenanted and it will be sold with tenants in situ for immediate investment. Rental yields can be obtained through Bettermove.

The property benefits from double glazing, and gas central heating throughout, with on street parking available.

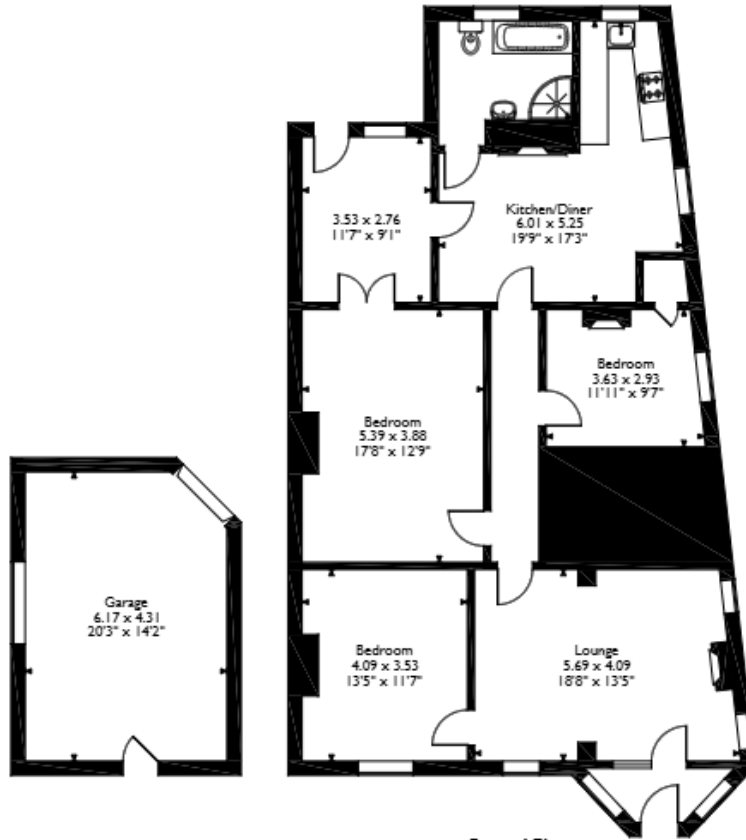
The interior of this well presented property comprises a spacious living room, fitted kitchen/diner, three double bedrooms, and a family bathroom. The exterior boasts a detached garage, and a private rear garden, perfect for enjoying the summer months.

Located in the popular city of Sunderland, the property is close to a range of amenities, including shops, supermarkets, restaurants, pubs, and schools. Excellent transport connections can be found from South Hylton Underground Station, Sunderland Train Station, a variety of local bus routes, and quick access to the A19.

This exciting opportunity should not be missed. All enquiries can be made through Bettermove.



Railway Terrace, Sunderland  
Approximate Gross Internal Area  
Main House = 130 Sq M/1399 Sq Ft  
Garage = 26 Sq M/280 Sq Ft  
Total = 156 Sq M/1679 Sq Ft



Ground Floor

Please note that the location of doors, windows and other items are approximate and this floorplan is to be used for illustrative purposes only. Unauthorized reproduction is prohibited.



20-22 Bridge End, Leeds, LS1 4DJ  
t: 0330 004 0050 e: hello@bettermove.co.uk  
[www.bettermove.co.uk](http://www.bettermove.co.uk)