



Ludgate Road
Manchester
M40

Offers In Excess Of £173,000

bettermove

Ludgate Road Manchester

Bettermove are proud to present this 3 bedroom semi-detached house in Manchester.

The property benefits from double glazing, and gas central heating throughout, with off street parking available via driveway.

The council tax band is A.

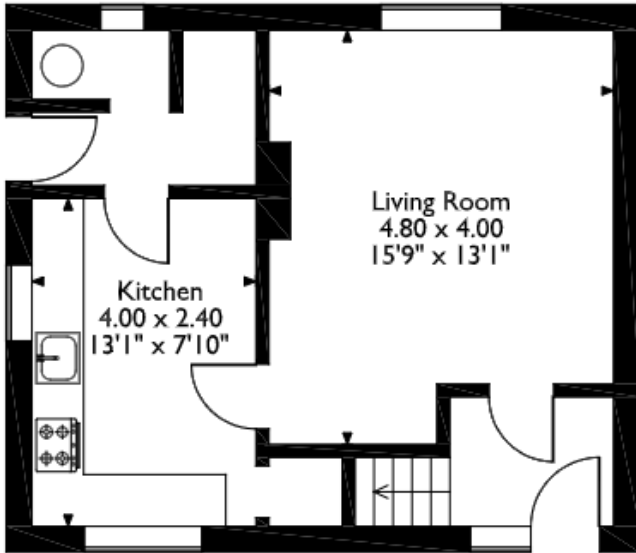
The interior of this property which is in need of modernisation, comprises a spacious living and dining area and fitted kitchen on the ground floor. The first floor consists of 3 bedrooms and the family bathroom. The exterior boasts a private rear garden, perfect for enjoying the summer months.

Located in the popular city of Manchester, the property is close to a range of amenities, including shops, supermarkets, restaurants and pubs. Excellent transport connections can be found from Moston train station, variety of bus and tram stops and the M60.

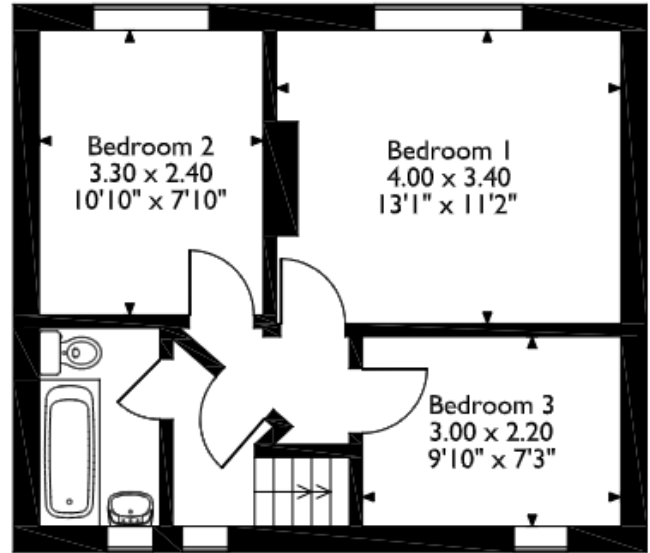
This exciting opportunity should not be missed. All enquiries can be made through Bettermove.



Ludgate Road, Manchester
Approximate Gross Internal Area
78 Sq M/840 Sq Ft



Ground Floor



First Floor

Please note that the location of doors, windows and other items are approximate and this floorplan is to be used for illustrative purposes only. Unauthorized reproduction is prohibited.



20-22 Bridge End, Leeds, LS1 4DJ
t: 0330 004 0050 e: hello@bettermove.co.uk
www.bettermove.co.uk