



Alphington Road  
Exeter  
Devon  
EX2

Offers In Excess Of £600,000

bettermove

# Alphington Road

## Exeter

Bettermove are proud to present this 5 bedroom, Grade II Listed semi-detached house in Exeter.

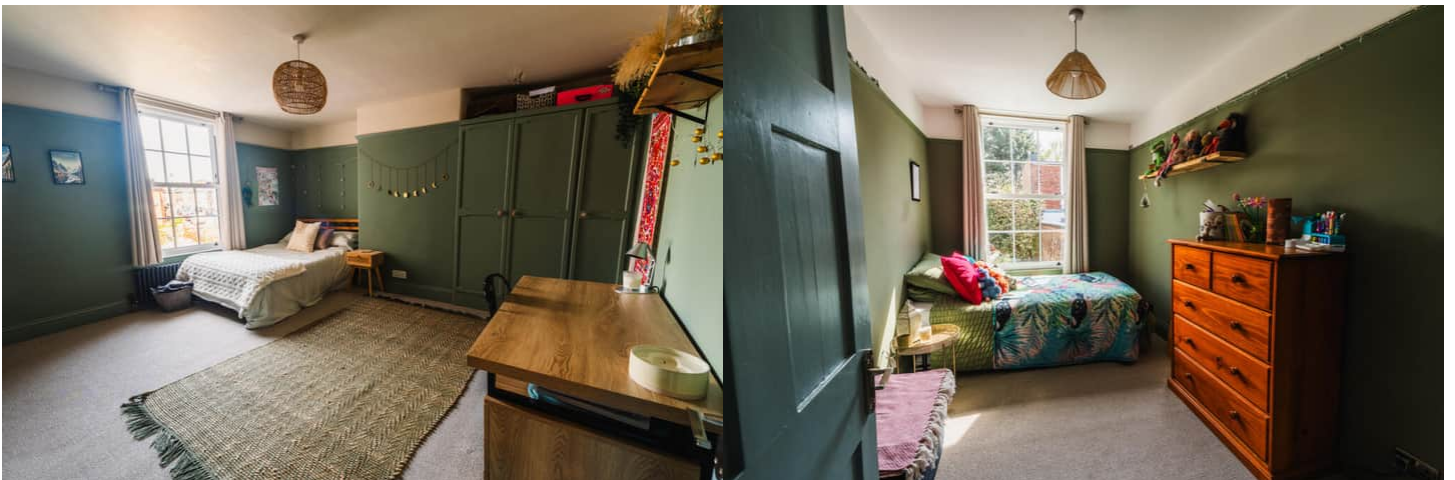
The property benefits from double glazing, and gas central heating throughout, with off street parking available for several vehicles, via the driveway.

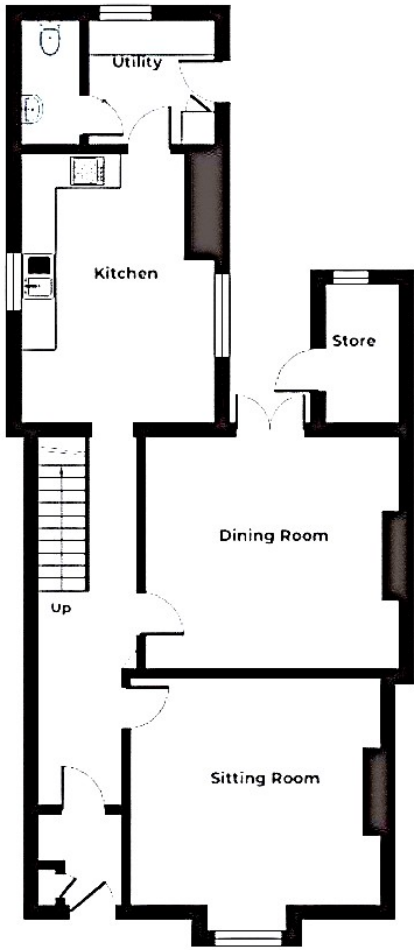
The council tax band is E.

The interior of this beautifully presented property comprises two reception rooms, both benefitting from feature fireplaces, a spacious kitchen and breakfast room, separate utility room and a W/C on the ground floor. The first floor consists of four double bedrooms, alongside the family bathroom. The upper floor is dedicated to a principal bedroom with en-suite facilities and exposed character features. Externally, the property boasts a private rear garden, perfect for enjoying the summer months.

Located in the popular city of Exeter, the property is close to a range of amenities, including shops, supermarkets, restaurants, pubs, schools and Exeter's historic Quayside. Excellent transport connections can be found from Exeter St Thomas Train Station, a variety of local bus routes, and quick access to the A30.

This exciting opportunity should not be missed. All enquiries can be made through Bettermove.

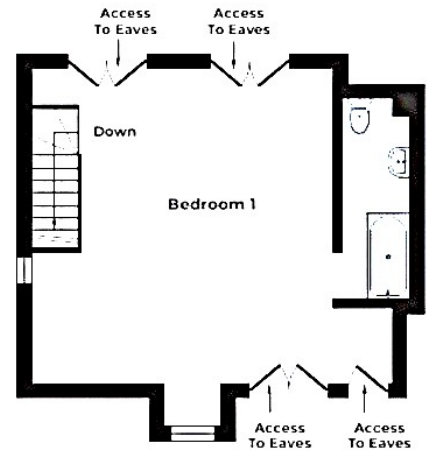




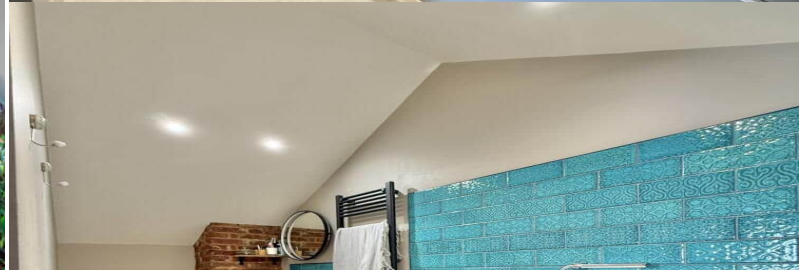
GROUND FLOOR



FIRST FLOOR



SECOND FLOOR



20-22 Bridge End, Leeds, LS1 4DJ  
t: 0330 004 0050 e: hello@bettermove.co.uk  
[www.bettermove.co.uk](http://www.bettermove.co.uk)