



**St Peters Close  
Cheltenham  
Gloucestershire  
GL51**

**Offers in Excess of £110,000**

**bettermove**

# St Peters Close Cheltenham

Bettermove are proud to present this 2 bedroom flat in Cheltenham, available with no forward chain.

The property benefits from double glazing, and electric heating throughout, with communal parking available.

The council tax band is A.

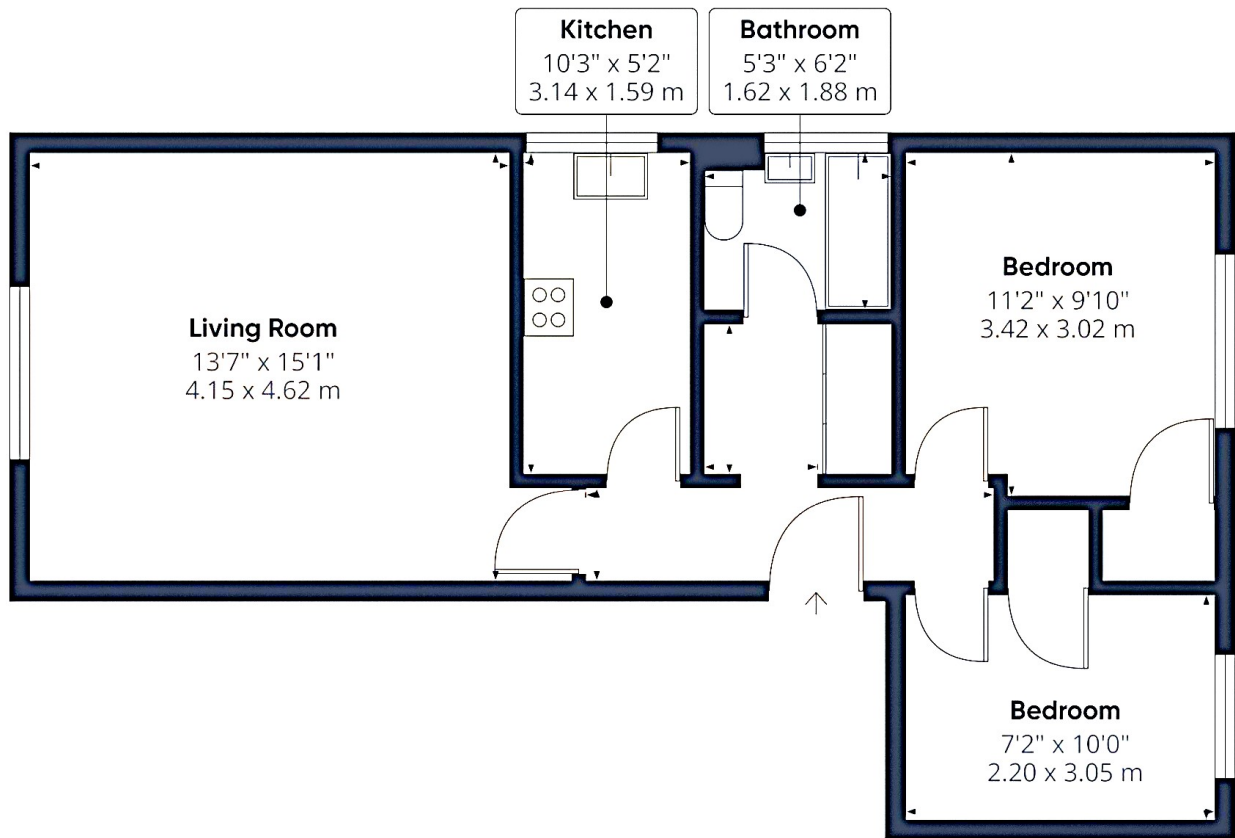
This is a leasehold property with 79 years remaining on the lease; the ground rent is £55.00 per annum, and the service charge is £2,000.00 per annum.

The interior of this beautifully presented, ground floor property comprises a spacious living room, fitted kitchen, two bedrooms, and a family bathroom. The exterior boasts communal gardens, perfect for enjoying the summer months.

Located in the popular town of Cheltenham, the property is close to a range of amenities, including shops, supermarkets, restaurants and pubs. Excellent transport connections can be found from Cheltenham Spa Train Station, a variety of local bus routes, and quick access to the M5.

This exciting opportunity should not be missed. All enquiries can be made through Bettermove.





Energy Efficiency Rating		
	Current	Potential
<i>Very energy efficient - lower running costs</i>		
(92+) <b>A</b>		
(81-91) <b>B</b>		
(69-80) <b>C</b>		
(55-68) <b>D</b>		
(39-54) <b>E</b>		
(21-38) <b>F</b>		
(1-20) <b>G</b>		
<i>Not energy efficient - higher running costs</i>		
	60	74
England, Scotland & Wales <small>EU Directive 2002/91/EC</small>		

Environmental Impact (CO <sub>2</sub> ) Rating		
	Current	Potential
<i>Very environmentally friendly - lower CO<sub>2</sub> emissions</i>		
(92+) <b>A</b>		
(81-91) <b>B</b>		
(69-80) <b>C</b>		
(55-68) <b>D</b>		
(39-54) <b>E</b>		
(21-38) <b>F</b>		
(1-20) <b>G</b>		
<i>Not environmentally friendly - higher CO<sub>2</sub> emissions</i>		
	40	56
England, Scotland & Wales <small>EU Directive 2002/91/EC</small>		



20-22 Bridge End, Leeds, LS1 4DJ  
t: 0330 004 0050 e: hello@bettermove.co.uk  
[www.bettermove.co.uk](http://www.bettermove.co.uk)