



East Mead
Aughton
Ormskirk
Lancashire
L39

Offers In Excess Of £480,000

bettermove 

East Mead

Ormskirk

Bettermove are proud to present this 5 bedroom detached house in Aughton.

The property benefits from double glazing, and gas central heating throughout, with off street parking available via the driveway and garage.

The council tax band is E.

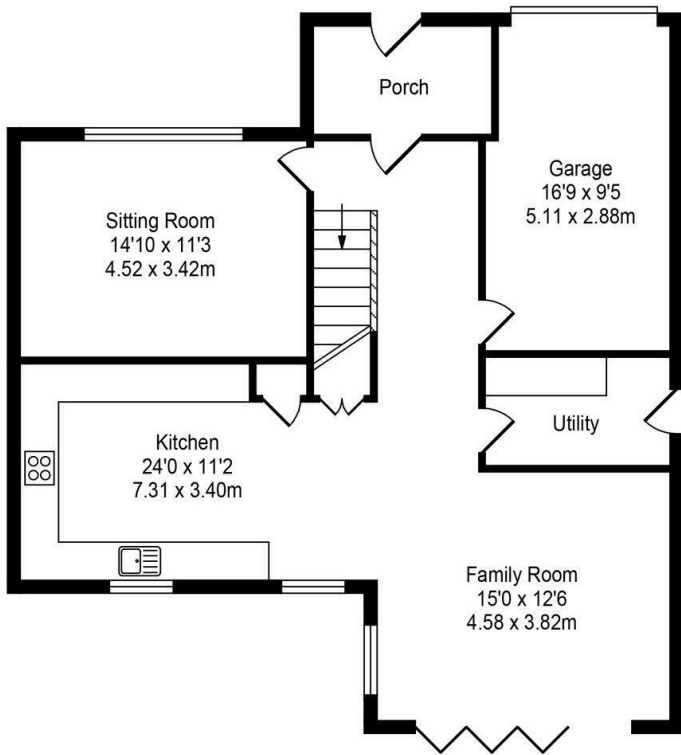
The interior of this beautifully presented property comprises a spacious living room and an open-plan kitchen, dining and family area, with a utility room, and access to the garage on the ground floor. The first floor consists of five well-proportioned bedrooms, including two with en-suite facilities, alongside a family bathroom. Externally, the property boasts a private rear garden, perfect for enjoying the summer months, featuring a generous paved terrace and lawned area.

Located in the sought after village of Aughton, Ormskirk, the property is close to a range of amenities, including shops, supermarkets, restaurants, pubs, and schools. Excellent transport connections can be found from Aughton Park, and Town Green Mersey Rail stops, a variety of local bus routes, and quick access to the A59.

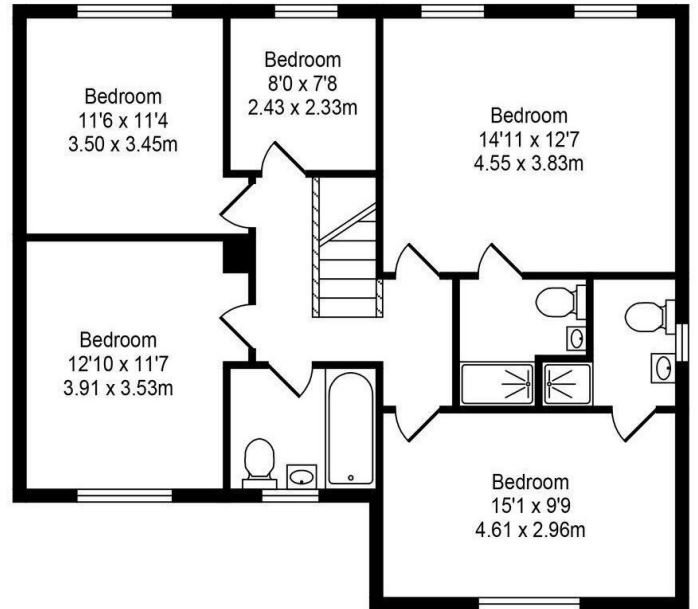
This exciting opportunity should not be missed. All enquiries can be made through Bettermove.



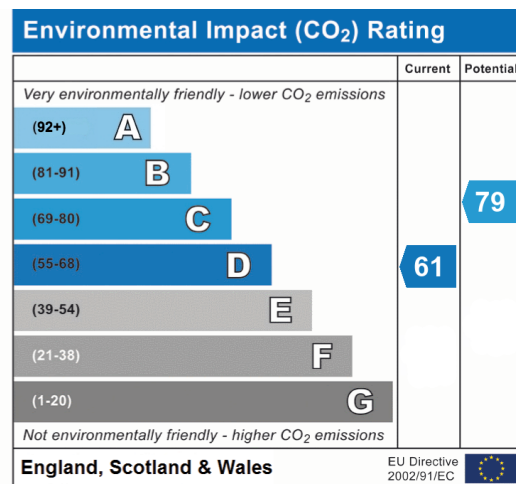
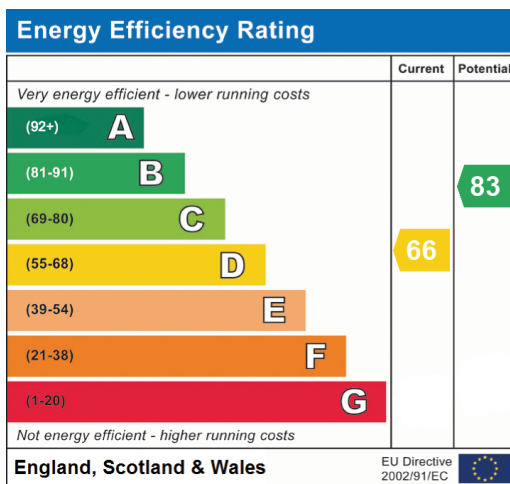
Total Approx. Floor Area 1872 Sq.ft. (173.91 Sq.M.)



Approx. Floor Area 975 Sq.Ft (90.58 Sq.M.)



Approx. Floor Area 897 Sq.Ft (83.33 Sq.M.)





20-22 Bridge End, Leeds, LS1 4DJ
t: 0330 004 0050 e: hello@bettermove.co.uk
www.bettermove.co.uk